

CENTURY®

LEGENDARY LEADERSHIP



OWNER'S MANUAL

2014 TUNNEL TRUCK

PARTS & SCHEMATICS

NOTE: MANUAL including **SPECIFICATIONS**, subject to change without notice
All ratings specified are based on structural factors only,
not vehicle capacities or capabilities.

CENTURY®

Miller Industries Towing Equipment Inc.

8503 Hilltop Drive

Ooltewah, Tennessee 37363

Phone (423) 238-4171 • FAX (423) 238-5371

FORM NO. 29575002

03 / 2015

LIMITED WARRANTY

MILLER INDUSTRIES TOWING EQUIPMENT INC., hereinafter referred to as MILLER, warrants to the original purchaser that each new MILLER wrecker or other MILLER products will be free from defects in material and workmanship for a period of twelve (12) months from date placed in service, but in no event shall such warranty period exceed twenty-four (24) months from date of manufacture by MILLER. The purchaser must promptly notify MILLER in writing of any failure in material or workmanship. In no event shall MILLER accept such notification later than twenty-four (24) months from date of delivery or twelve (12) months from date placed in service, whichever is earlier.

MILLER's obligation under this warranty, statutory or otherwise, is limited to the repair or replacement at the MILLER factory, or at a point designated by MILLER, of such part or parts as shall appear upon inspection by MILLER to be defective in material or workmanship. New or remanufactured parts will be used for any replacement at MILLER's option. This warranty is not transferable. This warranty does not obligate MILLER to bear the cost of labor or transportation charges in connection with the repair or replacement of any parts found to be defective, nor shall it apply to a product upon which repairs or alterations have been made unless authorized by MILLER.

EXCEPT AS EXPRESSLY SET FORTH IN THIS WARRANTY, MILLER MAKES NO OTHER WARRANTY, EXPRESS OR IMPLIED, AND HEREBY DISCLAIMS ALL OTHER WARRANTIES INCLUDING, BUT NOT LIMITED TO, THE IMPLIED WARRANTIES OF MERCHANTABILITY AND FITNESS FOR A PARTICULAR PURPOSE. MILLER shall in no event be liable for claimed downtime, claimed loss of profits or goodwill, or any other special, incidental, indirect, or consequential damages concerning or relating to any product or parts, whether based on negligence, strict liability, breach of contract, breach of warranty, misrepresentation or any other legal theory, regardless of whether the loss resulted from any general or particular requirement which MILLER knew or had reason to know about at the time of sale.

MILLER MAKES NO WARRANTY, EXPRESS OR IMPLIED, AS TO THE FINISHED PRODUCTS MANUFACTURED OR SUPPLIED BY ANOTHER MANUFACTURER AND SUPPLIED BY MILLER TO PURCHASER, including, but not limited to, any vehicle to which a MILLER product may be affixed or any accessories or wire rope, and MILLER EXPRESSLY DISCLAIMS ANY IMPLIED WARRANTIES OF MERCHANTABILITY OR FITNESS FOR A PARTICULAR PURPOSE AS TO SUCH EQUIPMENT OR PRODUCTS. This language shall in no way affect or diminish the rights of the purchaser to rely on such warranties as are extended by such manufacturers or suppliers. MILLER shall, to the extent permitted under applicable law, pass on to the purchaser such manufacturer's or seller's warranty.

MILLER, whose policy is one of continuous improvement, reserves the right to improve its products through changes in design or materials as it may deem desirable without being obligated to incorporate such changes in products previously sold. This warranty is not intended to cover or include the following items, which are set forth by way of example and not limitation:

- A. Normal deterioration of trim, paint, lettering, and appearance items due to wear or exposure to weather, road conditions, road treatments, etc.
- B. Any damage or defect due to accident, misuse, abuse, improper or unauthorized repairs, failure to provide reasonable and necessary maintenance, or uses for which the equipment was not designed or intended.
- C. Alterations or modifications that affect performance, operation or reliability.
- D. Normal maintenance parts including, but not limited to, wear pads, bushings, wire rope, mud flaps, fenderettes, light bulbs, hydraulic oil, filters, and tow sling belts.

IT IS EXPRESSLY UNDERSTOOD THAT MILLER MAKES NO IMPLIED WARRANTY THAT MILLER PRODUCTS SHALL BE FIT FOR THE PURPOSE OF LIFTING OR MOVING PEOPLE OR FOR ANY OTHER IMPROPER USE.



Miller Industries Towing Equipment Inc.
8503 Hilltop Drive
Ooltewah, Tennessee 37363

Telephone (423) 238-4171

SERIAL NUMBER

--

OWNER, USER AND OPERATOR:

Century appreciates your choice of our wrecker for your application. Our number one priority is user safety which is best achieved by our joint efforts. We feel that you can make a major contribution to safety if you, as the equipment owner and operator:

- 1. Comply with Federal, State, and Local Regulations.**
- 2. Read, Understand, and Follow the Instructions in this Manual.**
- 3. Use Good, Safe Work Practices in a Common Sense Way.**
- 4. Only have Authorized and Trained Operators running the Wrecker.**

Also contained in this manual is a Parts Section for your Wrecker. Use of other than Factory or Factory Authorized Parts will render the Warranty void.

TABLE OF CONTENTS



The operator must read and understand
all instructions in this manual
before operating the wrecker.

It is assumed by CENTURY that the Owner/Operator has thorough knowledge of the accepted and lawful retrieval and towing methods as dictated by his city, county or state. CENTURY rejects any liability claim that may result from the incorrect or unlawful application of its equipment.

Section I - PARTS

SUBFRAME ASSEMBLY	I-2 & I-3
BOOM ASSEMBLY	I-4 & I-5
OUTER TILT COLUMN ASSEMBLY	I-6 & I-7
INNER TILT COLUMN ASSEMBLY	I-8 & I-9
STINGER ASSEMBLY	I-10 & I-11
CROSSBAR ASSEMBLY	I-12 & I-13
HYDRAULIC TANK ASSEMBLY	I-14 & I-15
CONTROL ASSEMBLY	I-16 & I-17
L.H. VALVE ASSEMBLY	I-18 & I-19
R.H. VALVE ASSEMBLY	I-20 & I-21
BOOM SWIVEL ASSEMBLY	I-22 & I-23
HEAVY DUTY TRUCK HITCH	I-24 & I-25

Section II - SCHEMATICS

ELECTRICAL	II-1 thru II-3
HYDRAULIC	II-4

Section I - PARTS

This Section is provided by the manufacturer for the purpose of ordering any component part of the **2014 TUNNEL TRUCK** that may be required when part replacement is necessary. Be certain to use only original equipment replacement parts for warranty purposes as well as for keeping your unit in its original state and optimum operating capacities.

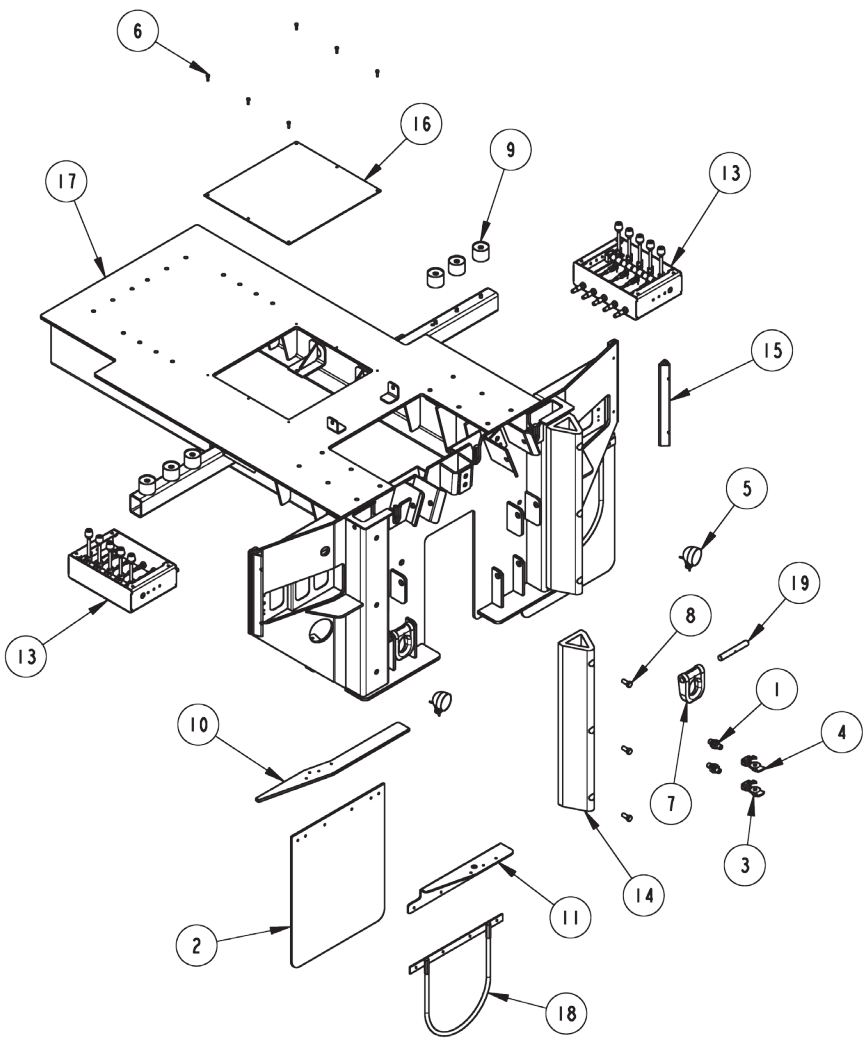
When ordering replacement or spare parts be sure to provide the following information to the manufacturer's **Parts Department**.

1. **Manual Number & Date of Publication**
2. **Manual Page Number**
3. **Page Title**
4. **Reference Number of Part Desired**
5. **Part Number**
6. **Part Description**
7. **Quantity of Part Desired**

Providing this information will help ensure that the correct parts will be delivered to you in an expedient manner without delay. Should additional information be required for repair or replacement of certain components, contact your Manufacturer Authorized Representative.

The Manufacturer reserves the right, without notice or obligation, to improve or modify their products, which may change the specifications, models and feature availability.

Section I - PARTS (cont'd)
SUBFRAME ASSEMBLY

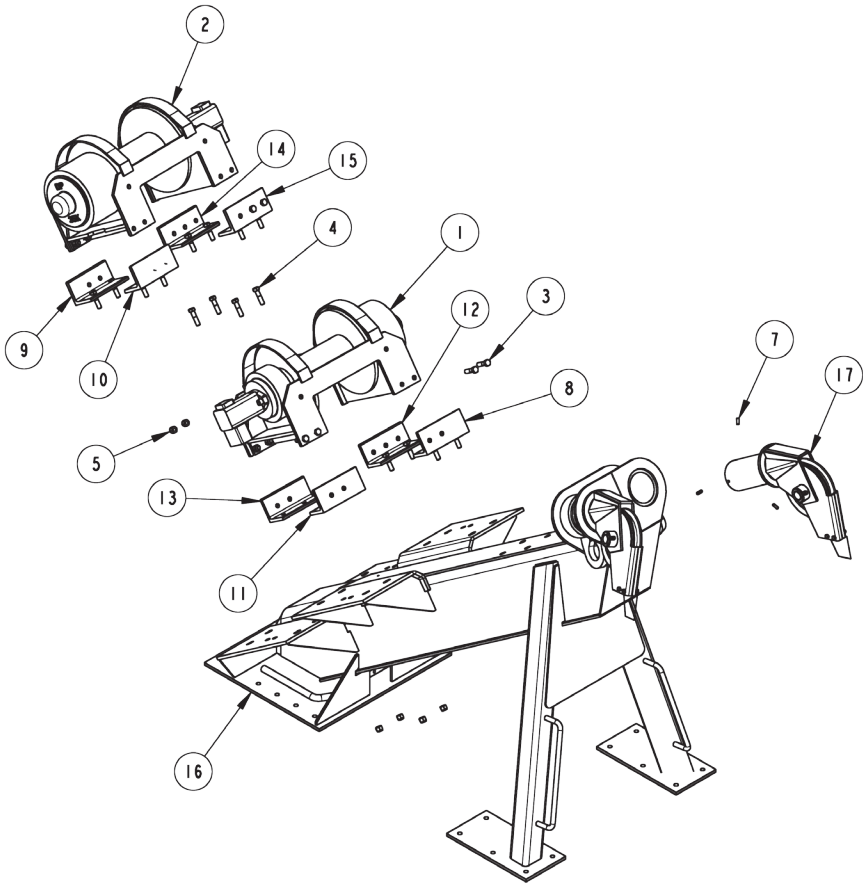


Section I - PARTS (cont'd)

SUBFRAME ASSEMBLY

REF. NO.	PART NUMBER	DESCRIPTION	NO. REQ'D
1	0301946	FITTING,BULKHEAD CONNECTOR	2
2	0303298	MUDFLAP	2
3	0307740	GLAD HAND COUPLING	1
4	0307741	GLAD HAND COUPLING	1
5	0311151	WORK LIGHT 70MM LED	2
6	0400109	5/16-18 X 1 HHCS GR.5,ZP	6
7	0712380	"D" RING	2
8	9043950	5/8-11X1-1/2	6
9	9402970	TOOLBOX MTG. PAD	6
10	19017022	LOWER TAILGATE STIFFENER	2
11	19017080	ANGLE - LH MUDFLAP MTG	1
12	19017081	ANGLE - RH MUDFLAP MTG	1
13	19019010	CONTROL ASSEMBLY (LH)	2
14	29573004	DOCK BUMPER	2
15	29573018	DOCK BUMPER	2
16	29577208	COVER, VALVE ACCESS	1
17	29578801	SUBFRAME ASSY	1
18	29578808	ANTI-SAIL WLDMT	2
19	BA0259	PIN, 'D' RING	2

Section I - PARTS (cont'd)
BOOM ASSEMBLY

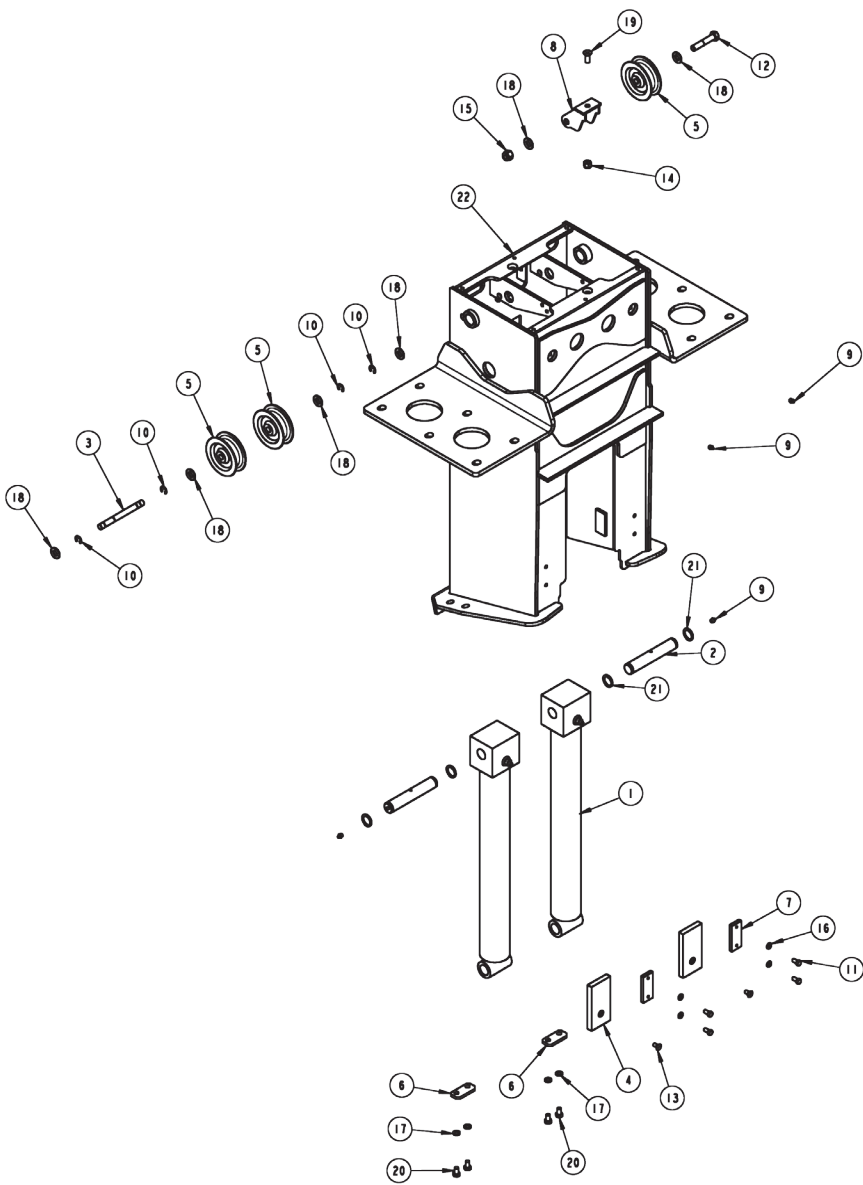


Section I - PARTS (cont'd)

BOOM ASSEMBLY

REF. NO.	PART NUMBER	DESCRIPTION	NO. REQ'D
1	0307061	WINCH DP 35K LEFT	1
2	0307061	WINCH, DP 35K RIGHT	1
3	0400254	5/8-11 X 2.5 HHCS GR 5 ZP	16
4	0400262	5/8-11 X 2 1/2 HHCS GR.8,ZP	16
5	0400421	5/8-11 NYLOCK HEX NUT ZP	16
6	0400426	5/8-11 NYLOCK NUT GR.8 ZP	16
7	0400554	3/8 X 1 ROLL PIN ZP	6
8	0710088	ANGLE - WINCH MTG	1
9	19017049	ANGLE - WINCH MTG	1
10	19017050	ANGLE - WINCH MTG	1
11	19017114	ANGLE - WINCH MTG	1
12	29577211	ANGLE - WINCH MTG	1
13	29577212	ANGLE - WINCH MTG	1
14	29577213	ANGLE - WINCH MTG	1
15	29577214	ANGLE - WINCH MTG	1
16	29578102	BOOM WELDMENT	1
17	29579804	SWIVEL LEFT BOOM ASSY	2

Section I - PARTS (cont'd)
OUTER TILT COLUMN ASSEMBLY

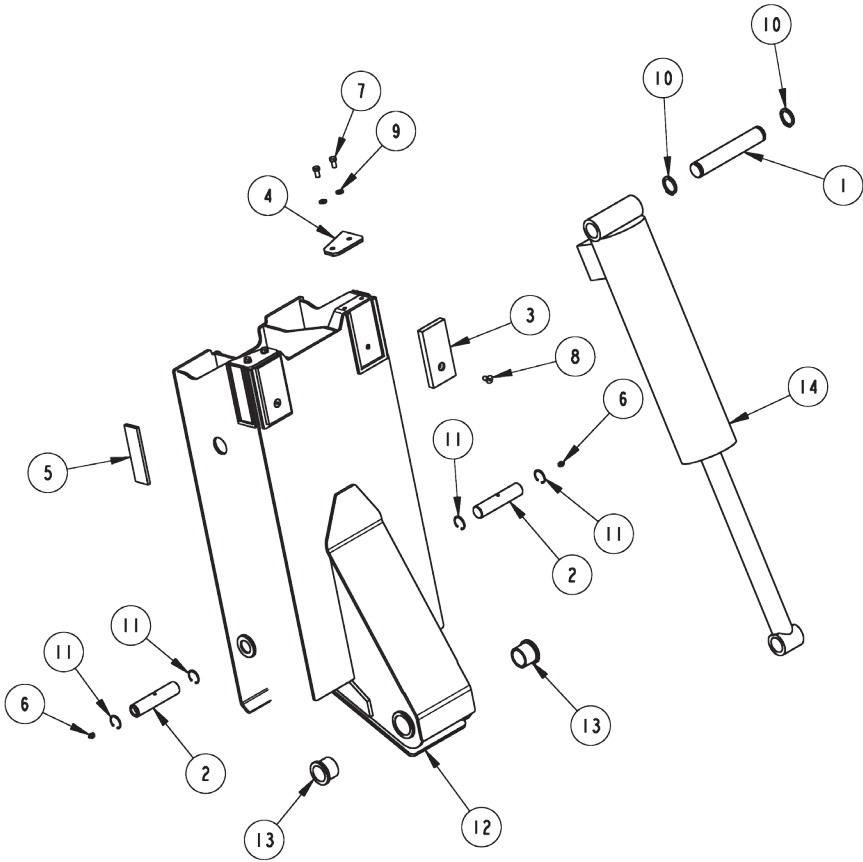


Section I - PARTS (cont'd)

OUTER TILT COLUMN ASSEMBLY

REF. NO.	PART NUMBER	DESCRIPTION	NO. REQ'D
1	511-3000004	CYLINDER, 3" BORE / 1-1/2" ROD	2
2	3116-700001	PIN - STINGER UPPER LIFT	2
3	3116-700002	PIN - HOSE SHEAVE ASSY	1
4	3116-740001	PAD	2
5	3116-749001	SHEAVE - HOSE TENSIONER ASSY	3
6	3116-749002	PLATE - PAD RETAINER OUTER TILT	2
7	3116-749003	SPACER PLATE - OUTER TILT COLUMN	2
8	3116-842100	FIXED SHEAVE BRACKET WELD'T	1
9	0301895	GREASE FITTING, 1/8 NPT STRAIGHT	4
10	0307655	RETAINING RING - EXT. #5133-62	4
11	0400121	3/8-16NC X 3/4 HHCS GR. 5	4
12	0400257	5/8-11 X 3-1/4 HHCS GR5 ZP	1
13	0400349	SCREW, 3/8"-16 X 3/4" FL HD SKT	2
14	0400408	1/2-13 NYLOCK HEX NUT ZP	1
15	0400421	5/8-11 NYLOCK HEX NUT ZP	1
16	0400482	3/8 HELICAL LOCKWASHER ZP	4
17	0400487	7/16 HELICAL LOCKWASHER ZP	4
18	0400505	5/8 FLAT WASHER SAE	6
19	0400991	SCREW - 1/2-13 X 1-1/4 FHSS	1
20	9041353	7/16-20 UNF X 3/4 LG. HHCS	4
21	9056125	SNAP RING - 1-1/4" HEAVY DUTY	4
22	26578101	OUTER TILT COLUMN WELDMENT	1

Section I - PARTS (cont'd)
INNER TILT COLUMN ASSEMBLY

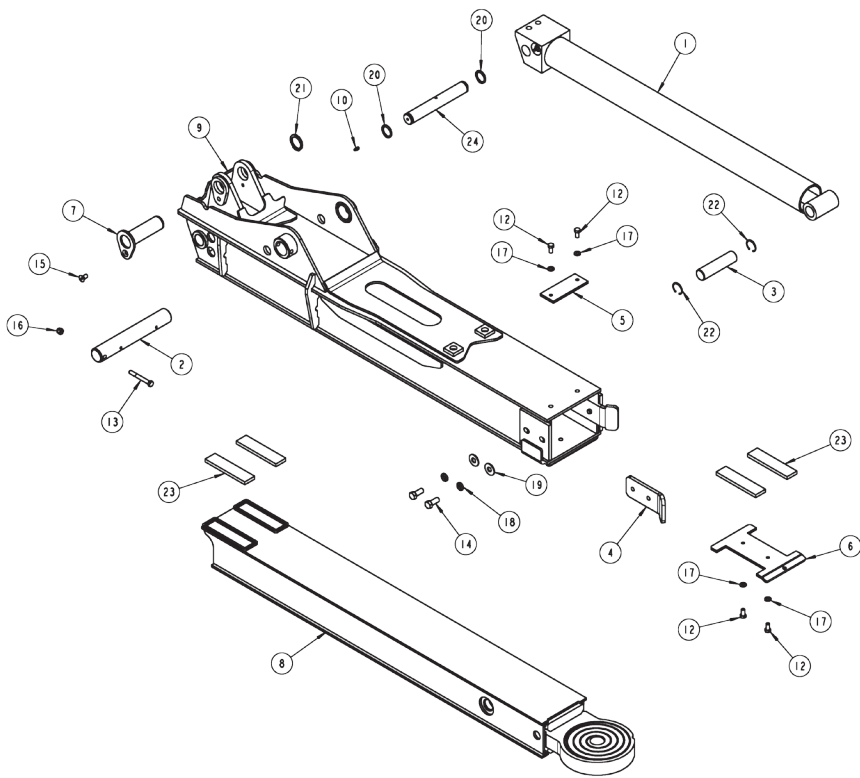


Section I - PARTS (cont'd)

INNER TILT COLUMN ASSEMBLY

REF. NO.	PART NUMBER	DESCRIPTION	NO. REQ'D
1	3014-700002	PIN - FOLD (BASE)	1
2	3116-700003	PIN - STINGER UPPER LIFT	2
3	3116-740001	PAD	2
4	3116-749004	PLATE - PAD RETAIN INNER TLT COL	2
5	3116-749005	SIDE WEAR PAD -INNER TILT COLUMN ASSY	2
6	0301895	GREASE FITTING, 1/8 NPT STRAIGHT	2
7	0400121	3/8-16NC X 3/4 HHCS GR. 5	4
8	0400349	SCREW, 3/8"-16 X 3/4" FL HD SKT	2
9	0400482	3/8 HELICAL LOCKWASHER ZP	4
10	9056150	RETAINING RING, 1-1/2"	2
11	9057125	SNAP RING, 1-1/4" NOM INTERNAL	4
12	26578102	INNER TILT COLUMN WELDMENT	1
13	806510001	BEARING-FLANGED	2
14	26573102C	CYLINDER, UNDERLIFT FOLD	1

Section I - PARTS (cont'd)
STINGER ASSEMBLY

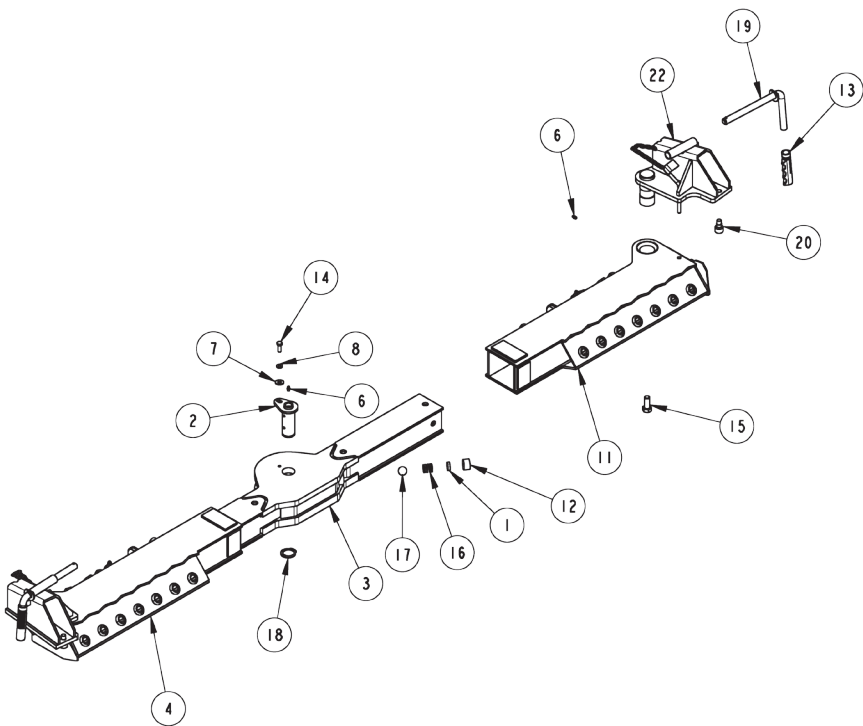


Section I - PARTS (cont'd)

STINGER ASSEMBLY

REF. NO.	PART NUMBER	DESCRIPTION	NO. REQ'D
1	511-3000002	CYL,- STINGER EXTEND	1
2	3012-700002	PIN - STINGER	1
3	3012-700003	PIN - UL EXTEND (ROD)	1
4	3012-794002	PLATE - XBAR POSITIONING	2
5	3012-794003	BAR - SPACER	1
6	3012-794004	PLATE - UL PAD CAGE	1
7	3014-801000	PIN WELDMENT	1
8	3014-850000	U/L INNER BOOM WELD'T	1
9	3116-840000	OUTER STINGER WELDMENT	1
10	0300113	GREASE FITTING, 1/4-28 STRAIGHT SS	5
11	0301895	GREASE FITTING, 1/8 NPT STRAIGHT	1
12	0400121	3/8-16NC X 3/4 HHCS GR. 5	4
13	0400133	3/8-16 X 3 HHCS GR.5,ZP	1
14	0400218	1/2-13 X 1-1/4 HHCS GR. 5 ZP	4
15	0400223	3/8-16 X 3/4 FL. HD. SOCKET SCREW	1
16	0400392	3/8-16 NYLOCK HEX NUT ZP	1
17	0400482	3/8 HELICAL LOCKWASHER ZP	4
18	0400491	1/2 HELICAL LOCKWASHER ZP	4
19	0400492	1/2 FLAT WASHER ZP	4
20	9056125	SNAP RING - 1-1/4" HEAVY DUTY	2
21	9056150	RETAINING RING, 1-1/2"	1
22	9057125	SNAP RING, 1-1/4" NOM INTERNAL	2
23	896040002	NYLATRON PAD	4
24	897400001	PIN-FRONT-BOOM EXT.	1

Section I - PARTS (cont'd)
CROSSBAR ASSEMBLY

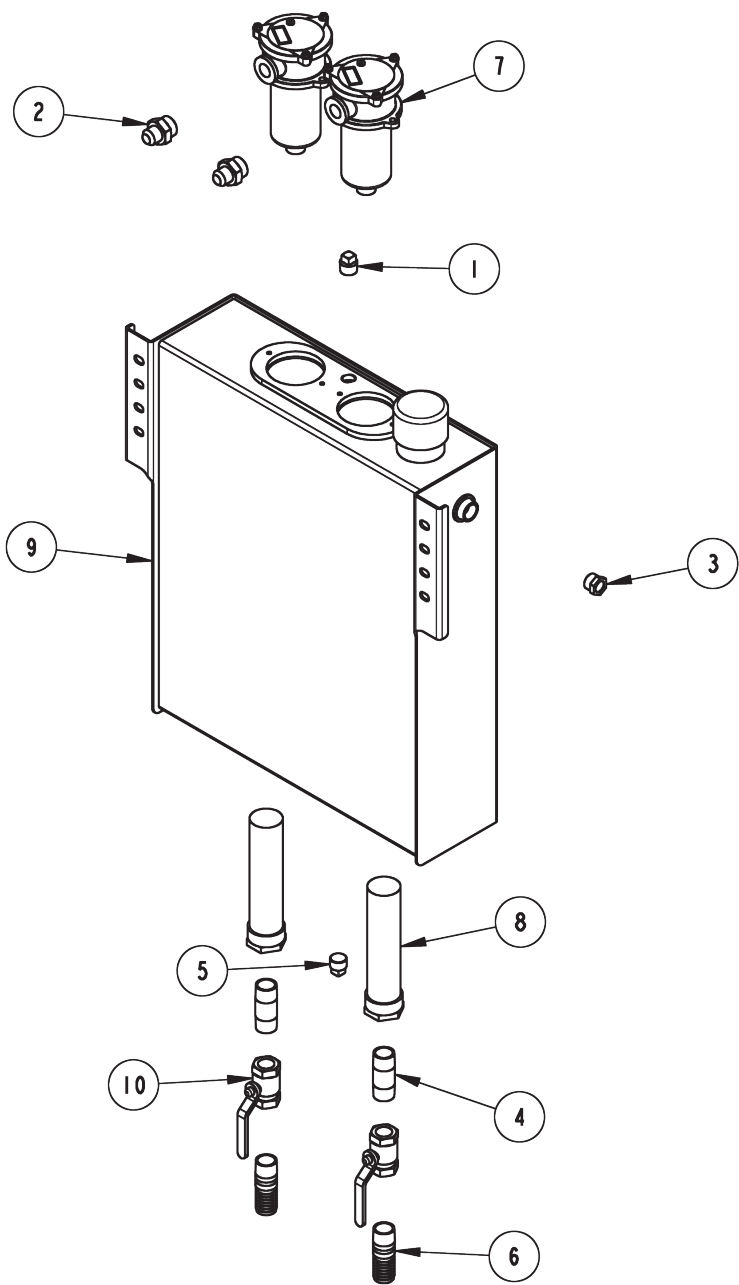


Section I - PARTS (cont'd)

CROSSBAR ASSEMBLY

REF. NO.	PART NUMBER	DESCRIPTION	NO. REQ'D
1	3014-796005	SPACER, CROSSBAR DIE SPRING	1
2	3014-801100	PIN - CROSSBAR	1
3	3014-860000	CROSSBAR-FABRICATED	1
4	3014-964000	LH WHEEL GRID ASSY	1
5	3014-965000	CROSS TUBE, RH OUTER-ASSY V30	1
6	0300113	GREASE FITTING, 1/4-28 STRAIGHT SS	2
7	0400480	3/8 FLAT WASHER ZP	1
8	0400482	3/8 HELICAL LOCKWASHER ZP	1
9	0400505	5/8 FLAT WASHER SAE	1
10	0400559	3/16 X 1 ROLL PIN ZP	1
11	0807838	CROSSTUBE - LH OUTER	1
12	9012944	PIPE PLUG, 1" NPT SKT HD	1
13	9032158	RUBBER GRIP	1
14	9041205	3/8-16 X 1 LG. HHCS GR.8	1
15	9043950	5/8-11X1-1/2	1
16	9047057	DETENT SPRING	1
17	9052013	BALL, 1" CHROME	1
18	9056150	RETAINING RING, 1-1/2"	1
19	880411500	STOP PIN	1
20	896380001	SCOOP RETAINING PIN	1
21	896380002	SCOOP WASHER	1
22	896387500	SCOOP BRACKET WELDMENT, RH	1

Section I - PARTS (cont'd)
HYDRAULIC TANK ASSEMBLY

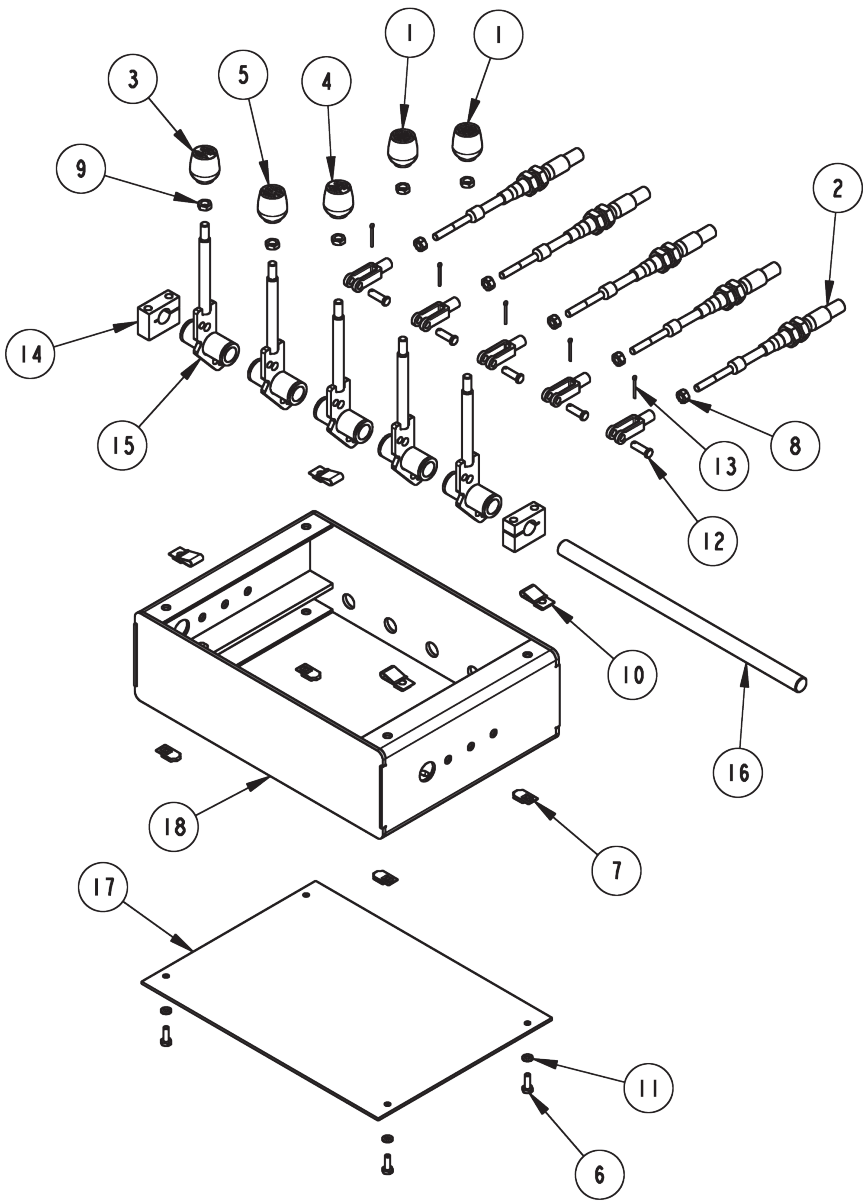


Section I - PARTS (cont'd)

HYDRAULIC TANK ASSEMBLY

REF. NO.	PART NUMBER	DESCRIPTION	NO. REQ'D
1	0300446	PIPE PLUG, 3/4" NPT MALE	1
2	0301368	CONNECTOR, 12MJ-16MB	2
3	0302570	SIGHT GAUGE	1
4	0302959	PIPE NIPPLE, 1" NPT X 3"	2
5	0303155	PIPE PLUG - 3/4 NPT (MAGNETIC)	1
6	9012927	PIPE NIPPLE, 1" NPT X 1-1/4" BARB	2
7	9018399	IMMERSION FILTER ASSEMBLY	2
8	29573015	SUCTION STRAINER	2
9	29578501	HYDRAULIC TANK WELDMT	1
10	HC1338	BALL VALVE, 1" BRASS	2

Section I - PARTS (cont'd)
CONTROL ASSEMBLY

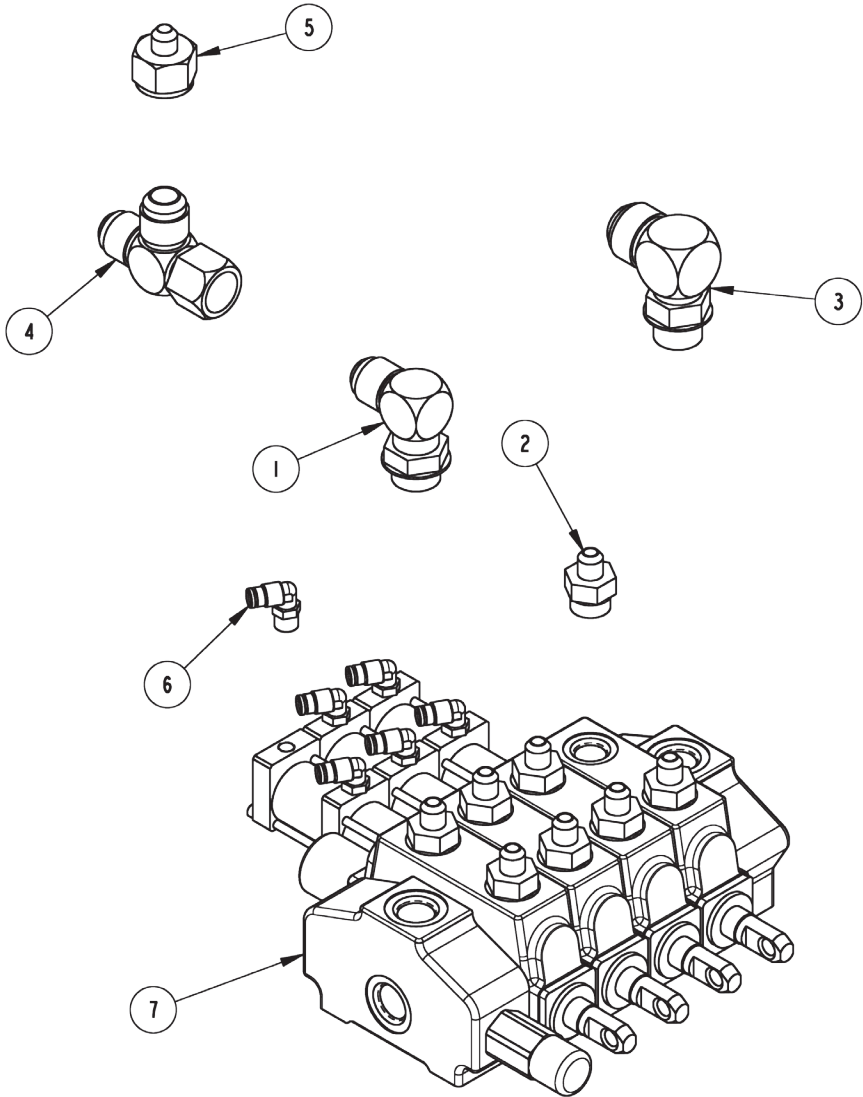


Section I - PARTS (cont'd)

CONTROL ASSEMBLY

REF. NO.	PART NUMBER	DESCRIPTION	NO. REQ'D
1	0300834	KNOB, CABLE (IN-OUT)	2
2	0302454	CONTROL CABLE	5
3	0302856	KNOB, TILT (UP-DN)	1
4	0302917	KNOB, WHL LIFT EXT (IN-OUT)	1
5	0302967	KNOB, WHL LIFT EXT (IN-OUT)	1
6	0400066	1/4-20 X 3/4 HHCS GR.5,ZP	4
7	0400369	1/4 "J" TYPE TINNERMAN	4
8	0400383	5/16-24 HEX NUT ZP	5
9	0400393	3/8"-16 HEX JAM NUT	5
10	0400396		4
11	0400452	1/4 HELICAL LOCKWASHER ZP	4
12	0400532	5/16 X 1 CLEVIS PIN ZP	5
13	0400540	COTTER PIN, 3/32" X 1"	5
14	0711235	CLAMP - SHAFT	2
15	0907441	CONTROL HANDLE ASSY	5
16	19017090	PIN - CONTROL HANDLE (4)	1
17	19017091	CONTROL FRAME BOTTOM	1
18	19018019	CONTROL FRAME WLMT	1

Section I - PARTS (cont'd)
L.H. VALVE ASSEMBLY

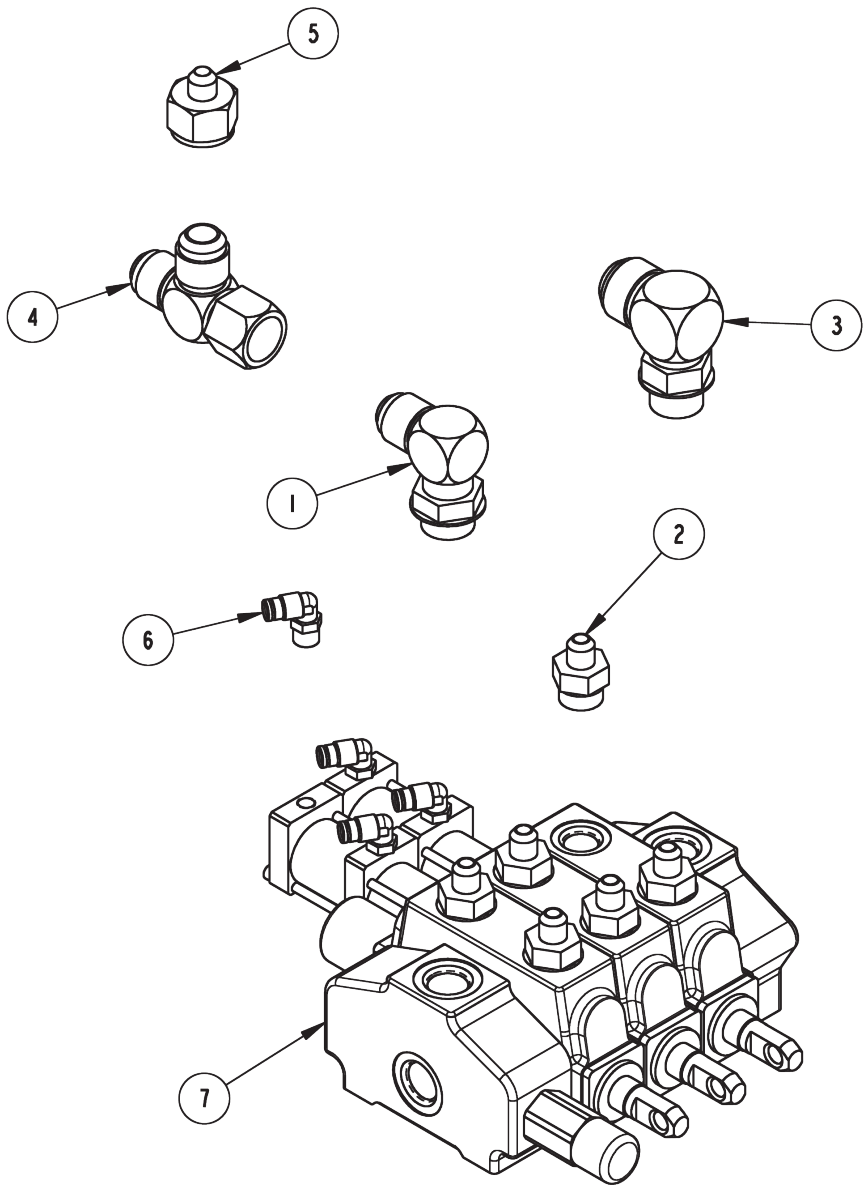


Section I - PARTS (cont'd)

L.H. VALVE ASSEMBLY

REF. NO.	PART NUMBER	DESCRIPTION	NO. REQ'D
1	0301545	ELBOW, 12MJ-12MB90	1
2	0301778	CONNECTOR 6MJx10MB	8
3	0302083	16MJ - 12MB 90 ELBOW	1
4	0302826	RUN TEE, 12MJ-12FJX-12MJ	1
5	0302829	ADAPTER, 12FJ-6MJ	1
6	9010520	FITTING - ELBOW, 1/4T-1/4NPT MALE	6
7	29573001	VALVE, SD8 4 SECTION	1

Section I - PARTS (cont'd)
R.H. VALVE ASSEMBLY

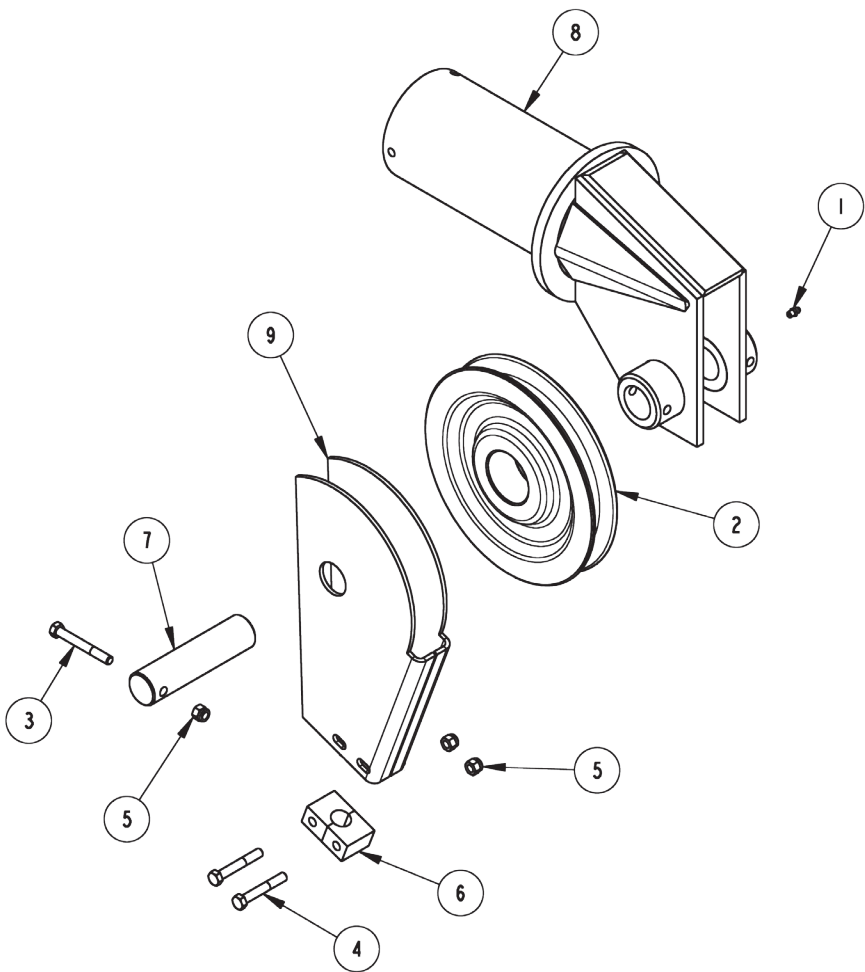


Section I - PARTS (cont'd)

R.H. VALVE ASSEMBLY

REF. NO.	PART NUMBER	DESCRIPTION	NO. REQ'D
1	0301545	ELBOW, 12MJ-12MB90	1
2	0301778	CONNECTOR 6MJX10MB	6
3	0302083	16MJ - 12MB 90 ELBOW	1
4	0302826	RUN TEE, 12MJ-12FJX-12MJ	1
5	0302829	ADAPTER, 12FJ-6MJ	1
6	9010520	FITTING - ELBOW, 1/4T-1/4NPT	4
7	29573002	MALE VALVE, SD8 3 SECTION	1

Section I - PARTS (cont'd)
BOOM SWIVEL ASSEMBLY

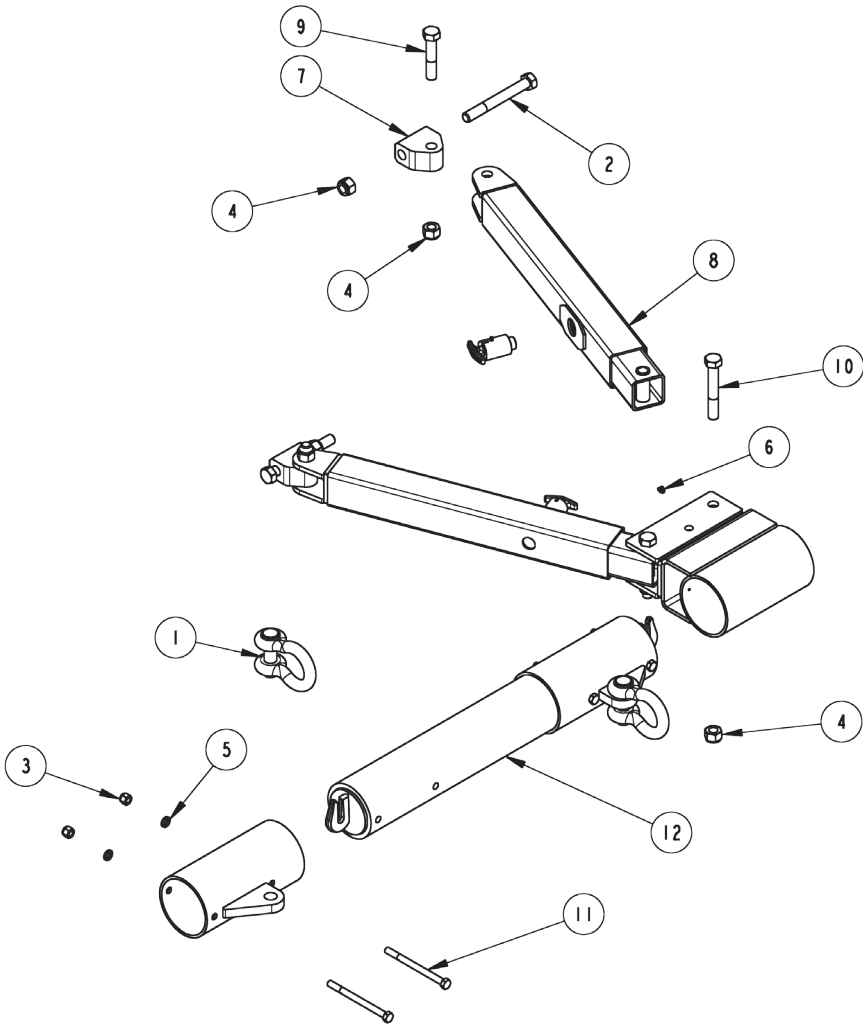


Section I - PARTS (cont'd)

BOOM SWIVEL ASSEMBLY

REF. NO.	PART NUMBER	DESCRIPTION	NO. REQ'D
1	0300113	GREASE FITTING, 1/4-28 STRAIGHT SS	1
2	0303441	10" SHEAVE	1
3	0400133	3/8-16 X 3 HHCS GR.5,ZP	1
4	0400150	3/8-16 X 2-1/2 HHCS GR5 ZP	2
5	0400392	3/8-16 NYLOCK HEX NUT ZP	3
6	0700801	BOTTOM CABLE GUIDE	2
7	0716134	SHEAVE SHAFT	1
8	0804315	SWIVEL BOOM END WLMT	1
9	29578809	CABLE GUIDE	1

Section I - PARTS (cont'd)
HEAVY DUTY TRUCK HITCH



Section I - PARTS (cont'd)

HEAVY DUTY TRUCK HITCH

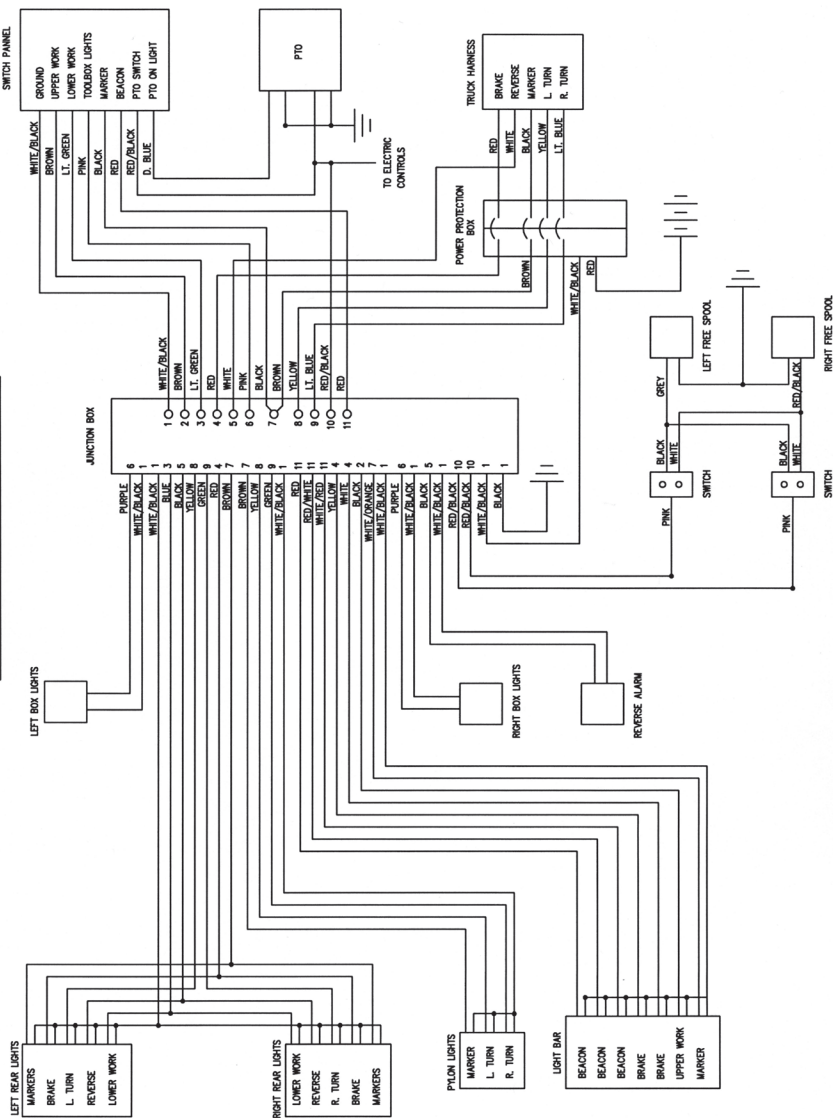
REF. NO.	PART NUMBER	DESCRIPTION	NO. REQ'D
1	0312689	ANCHOR SHACKLE 1-1/8" CROSBY ALLOY	2
2	0400319	1-8 NC X 8 1/2 HHCS GR.5, ZP	2
3	0400421	5/8-11 NYLOCK HEX NUT ZP	4
4	0400443	1-8 NYLOCK HEX NUT GR.8 ZP	6
5	0400508	5/8 HELICAL LOCKWASHER ZP	4
6	9012536	GREASE FITTING, 90 DEG	2
7	29577131	KNUCKLE	2
8	29578601	ARM - S.D. TRUCK ASSY	2
9	HD0281	1-8x5 HHCS GR 8 ZP	2
10	HD0283	1-8 x 6-1/2 HHCS GR 5 ZP	2
11	HD0481	5/8-11 x 8 HHCS GR5 ZP	4
12	VA0073	TACK - WELMENT MAIN TUBE	1

[illegible]

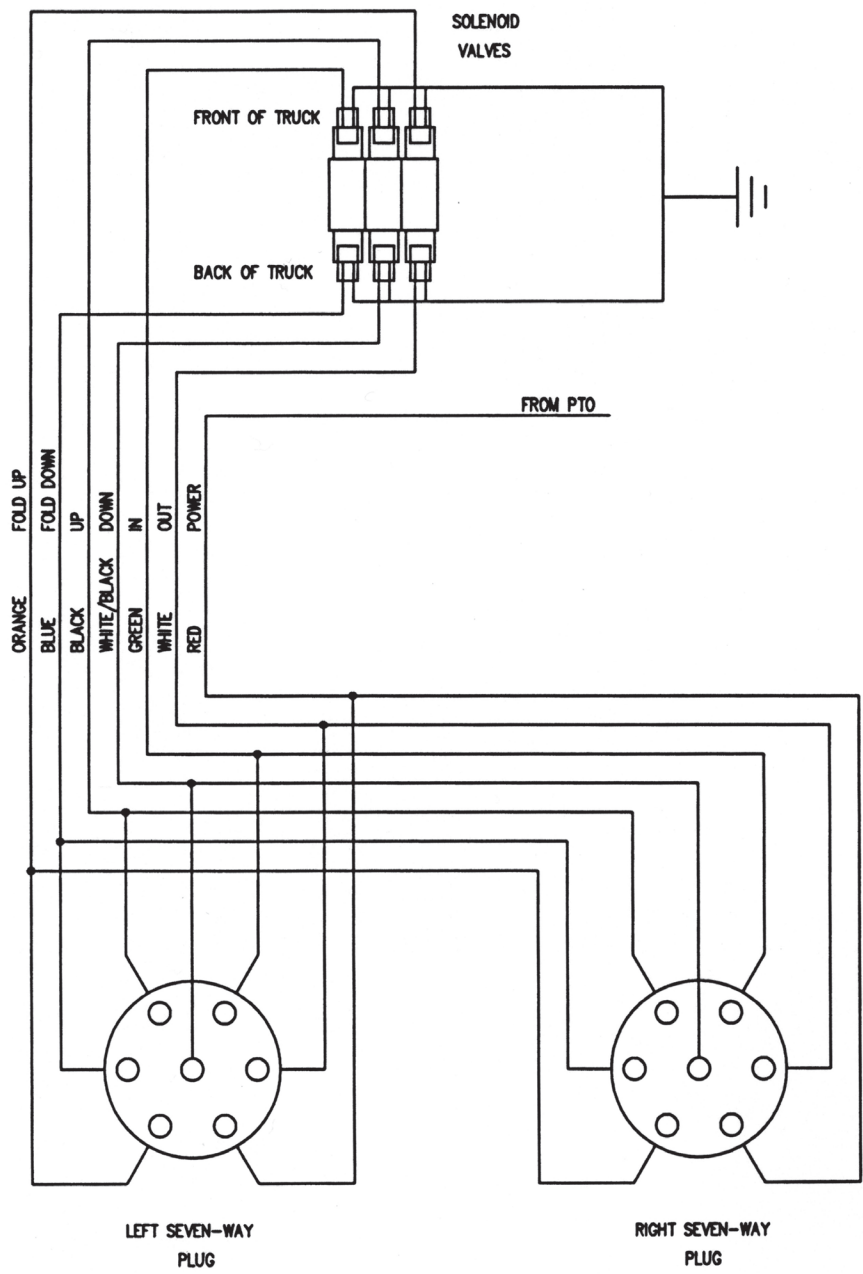
Section II - SCHEMATICS

ELECTRICAL

MAIN JUNCTION BOX WIRING

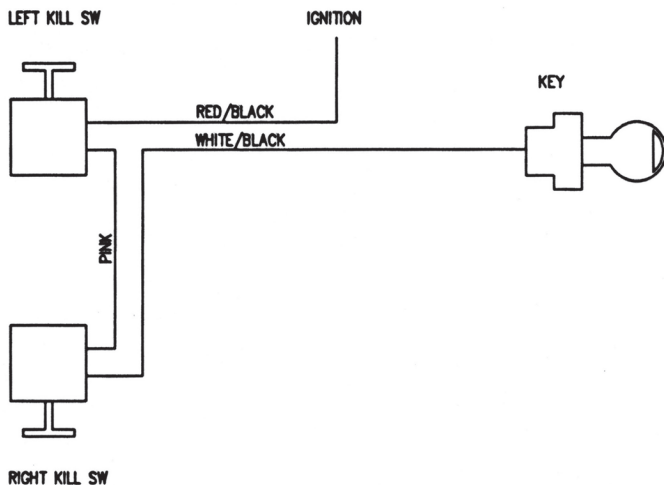


Section II - SCHEMATICS (cont'd)
HAND HELD REMOTE ELECTRICAL

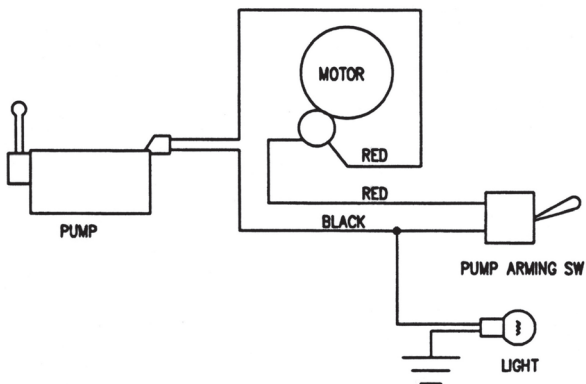


Section II - SCHEMATICS (cont'd)

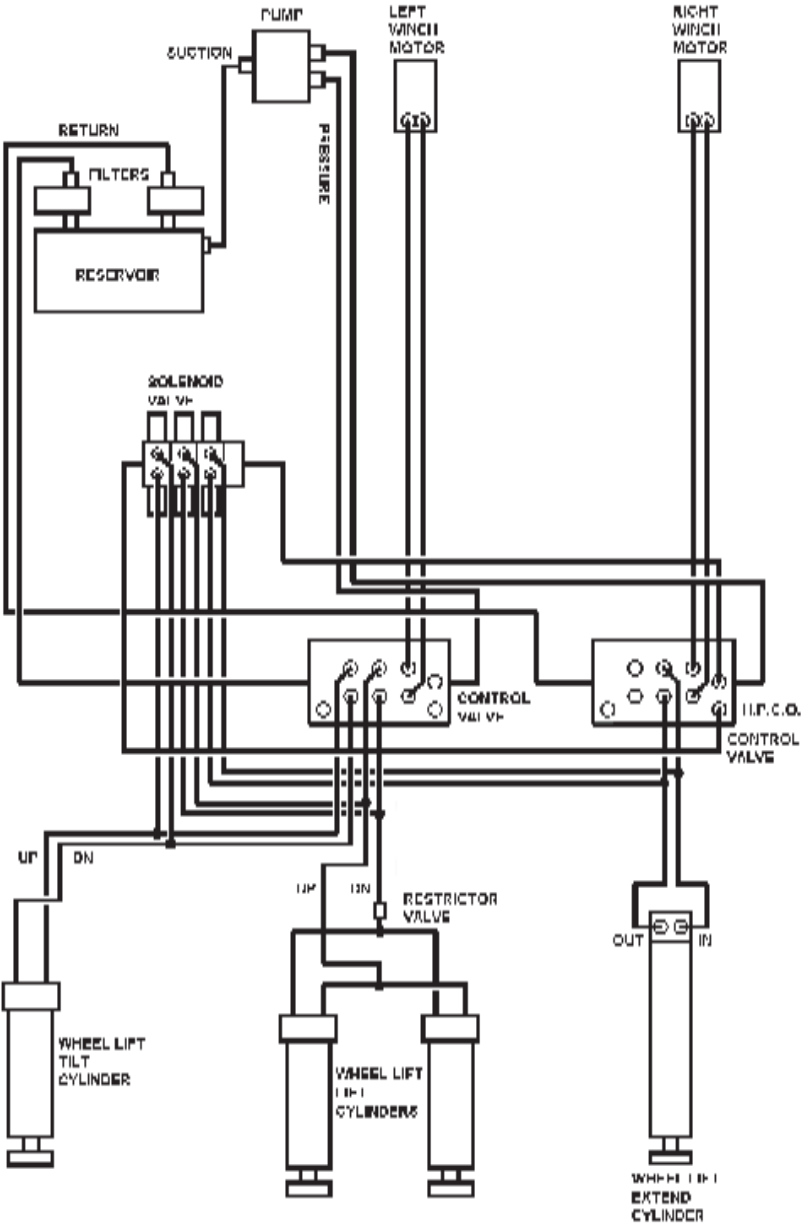
KILL SWITCH CIRCUIT



CAB LIFT PUMP CIRCUIT



Section II - SCHEMATICS (cont'd)
HYDRAULIC



[illegible]

CENTURY®

Miller Industries Towing Equipment Inc.

8503 Hilltop Drive • Ooltewah, Tennessee 37363 • (423) 238-4171

www.millerind.com