



OWNER'S MANUAL

DTU

PARTS

NOTE: MANUAL including SPECIFICATIONS, subject to change without notice.
All ratings specified are based on structural factors only,
not vehicle capacities or capabilities.



Miller Industries Towing Equipment Inc.
8503 Hilltop Drive
Ooltewah, Tennessee 37363
Phone (423) 238-4171 • FAX (423) 238-5371

FORM NO. 0501713
10 / 2009
PRICE \$25.00

LIMITED WARRANTY

MILLER INDUSTRIES TOWING EQUIPMENT INC., hereinafter referred to as MILLER, warrants to the original purchaser that each new MILLER wrecker or other MILLER products will be free from defects in material and workmanship for a period of twelve (12) months from date placed in service, but in no event shall such warranty period exceed twenty-four (24) months from date of manufacture by MILLER. The purchaser must promptly notify MILLER in writing of any failure in material or workmanship. In no event shall MILLER accept such notification later than twenty-four (24) months from date of delivery or twelve (12) months from date placed in service, whichever is earlier.

MILLER's obligation under this warranty, statutory or otherwise, is limited to the repair or replacement at the MILLER factory, or at a point designated by MILLER, of such part or parts as shall appear upon inspection by MILLER to be defective in material or workmanship. New or remanufactured parts will be used for any replacement at MILLER's option. This warranty is not transferable. This warranty does not obligate MILLER to bear the cost of labor or transportation charges in connection with the repair or replacement of any parts found to be defective, nor shall it apply to a product upon which repairs or alterations have been made unless authorized by MILLER.

EXCEPT AS EXPRESSLY SET FORTH IN THIS WARRANTY, MILLER MAKES NO OTHER WARRANTY, EXPRESS OR IMPLIED, AND HEREBY DISCLAIMS ALL OTHER WARRANTIES INCLUDING, BUT NOT LIMITED TO, THE IMPLIED WARRANTIES OF MERCHANTABILITY AND FITNESS FOR A PARTICULAR PURPOSE. MILLER shall in no event be liable for claimed downtime, claimed loss of profits or goodwill, or any other special, incidental, indirect, or consequential damages concerning or relating to any product or parts, whether based on negligence, strict liability, breach of contract, breach of warranty, misrepresentation or any other legal theory, regardless of whether the loss resulted from any general or particular requirement which MILLER knew or had reason to know about at the time of sale.

MILLER MAKES NO WARRANTY, EXPRESS OR IMPLIED, AS TO THE FINISHED PRODUCTS MANUFACTURED OR SUPPLIED BY ANOTHER MANUFACTURER AND SUPPLIED BY MILLER TO PURCHASER, including, but not limited to, any vehicle to which a MILLER product may be affixed or any accessories or wire rope, and MILLER EXPRESSLY DISCLAIMS ANY IMPLIED WARRANTIES OF MERCHANTABILITY OR FITNESS FOR A PARTICULAR PURPOSE AS TO SUCH EQUIPMENT OR PRODUCTS. This language shall in no way affect or diminish the rights of the purchaser to rely on such warranties as are extended by such manufacturers or suppliers. MILLER shall, to the extent permitted under applicable law, pass on to the purchaser such manufacturer's or seller's warranty.

MILLER, whose policy is one of continuous improvement, reserves the right to improve its products through changes in design or materials as it may deem desirable without being obligated to incorporate such changes in products previously sold. This warranty is not intended to cover or include the following items, which are set forth by way of example and not limitation:

- A. Normal deterioration of trim, paint, lettering, and appearance items due to wear or exposure to weather, road conditions, road treatments, etc.
- B. Any damage or defect due to accident, misuse, abuse, improper or unauthorized repairs, failure to provide reasonable and necessary maintenance, or uses for which the equipment was not designed or intended.
- C. Alterations or modifications that affect performance, operation or reliability.
- D. Normal maintenance parts including, but not limited to, wear pads, bushings, wire rope, mud flaps, fenderettes, light bulbs, hydraulic oil, filters, and tow sling belts.

IT IS EXPRESSLY UNDERSTOOD THAT MILLER MAKES NO IMPLIED WARRANTY THAT MILLER PRODUCTS SHALL BE FIT FOR THE PURPOSE OF LIFTING OR MOVING PEOPLE OR FOR ANY OTHER IMPROPER USE.



Miller Industries Towing Equipment Inc.
8503 Hilltop Drive
Ooltewah, Tennessee 37363
Telephone (423) 238-4171

SERIAL NUMBER

OWNER, USER AND OPERATOR:

We appreciate your choice of our towing and recovery unit for your application. Our number one priority is user safety which is best achieved by our joint efforts. We feel that you can make a major contribution to safety if you, as the equipment owner and operator:

- 1. Comply with Federal, State, and Local Regulations.**
- 2. Read, Understand, and Follow the Instructions in this Manual.**
- 3. Use Good, Safe Work Practices in a Common Sense Way.**
- 4. Only have Authorized and Trained Personnel performing maintenance on the Towing and Recovery Unit.**

TABLE OF CONTENTS

It is assumed by the manufacturer that the Owner/Operator has a thorough knowledge of the accepted and lawful retrieval and towing methods as dictated by his city, county or state. The manufacturer rejects any liability claim that may result from the incorrect or unlawful application of its equipment.

Section I - PARTS

| | |
|--|-------------|
| SUBFRAME ASSEMBLY | I-2 & I-3 |
| BOOM ASSEMBLY | I-4 & I-5 |
| UNDERLIFT ASSEMBLY | I-6 & I-7 |
| DTU TOWER & UNDERLIFT HYDRAULICS | I-8 & I-9 |
| PUMP, VALVE & FILTER HYDRAULICS | I-10 & I-11 |
| OPTIONAL WINCH HYDRAULICS & AIR FREE SPOOL | I-12 & I-13 |

Section VI - PARTS

This Section is provided by the manufacturer for the purpose of ordering any component part of the **HOLMES DTU** that may be required when part replacement is necessary. Be certain to use only original equipment replacement parts for warranty purposes as well as for keeping your unit in its original state and optimum operating capacities.

When ordering replacement or spare parts be sure to provide the following information to the manufacturer's **Parts Department**.

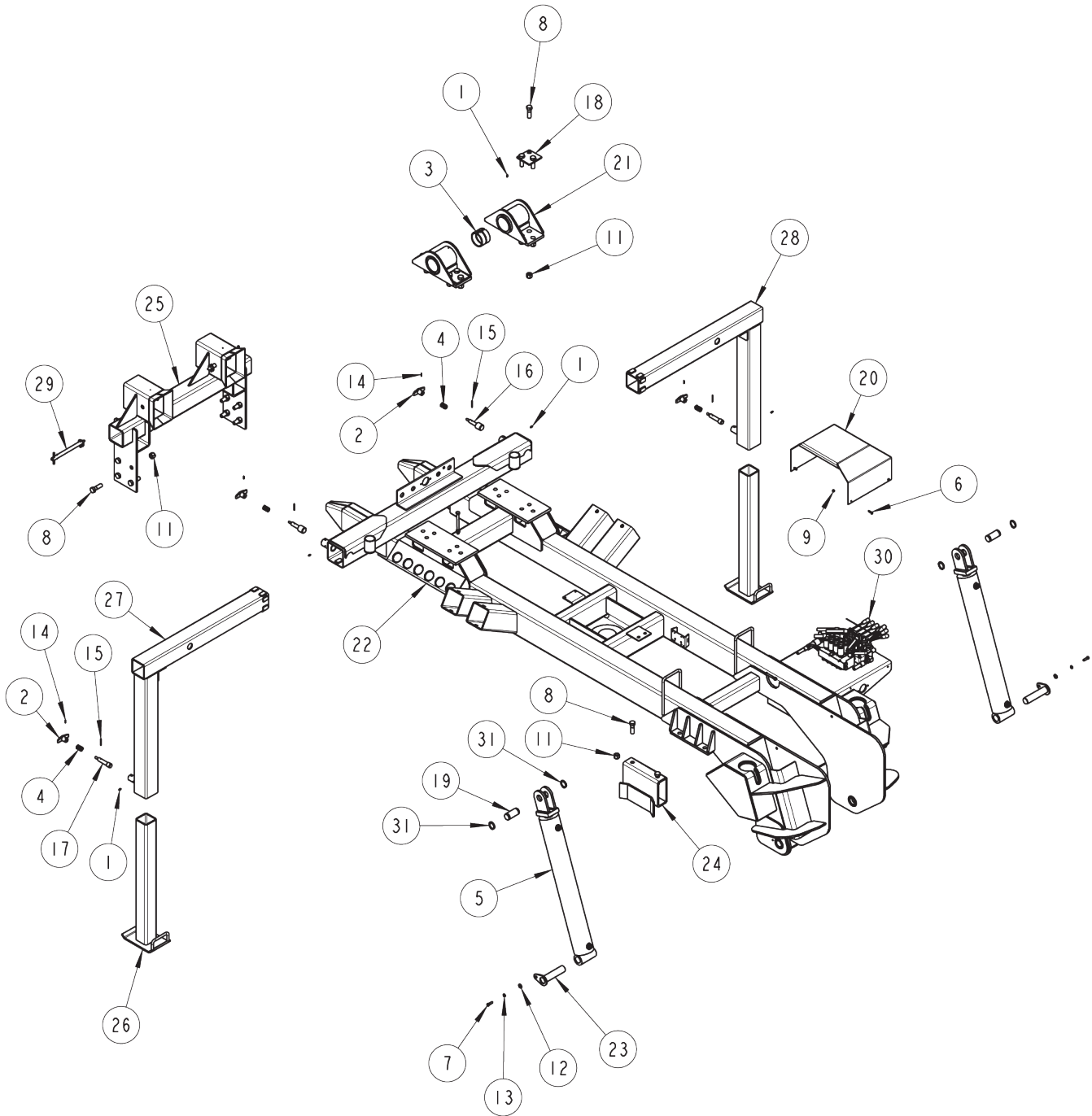
1. **Manual Number & Date of Publication**
2. **Manual Page Number**
3. **Page Title**
4. **Reference Number of Part Desired**
5. **Part Number**
6. **Part Description**
7. **Quantity of Part Desired**

Providing this information will help ensure that the correct parts will be delivered to you in an expedient manner without delay. Should additional information be required for repair or replacement of certain components, contact your Wrecker Manufacturer Authorized Representative.

The Manufacturer reserves the right, without notice or obligation, to improve or modify their products, which may change the specifications, models and feature availability.

Section I - PARTS (cont'd)

SUBFRAME ASSEMBLY



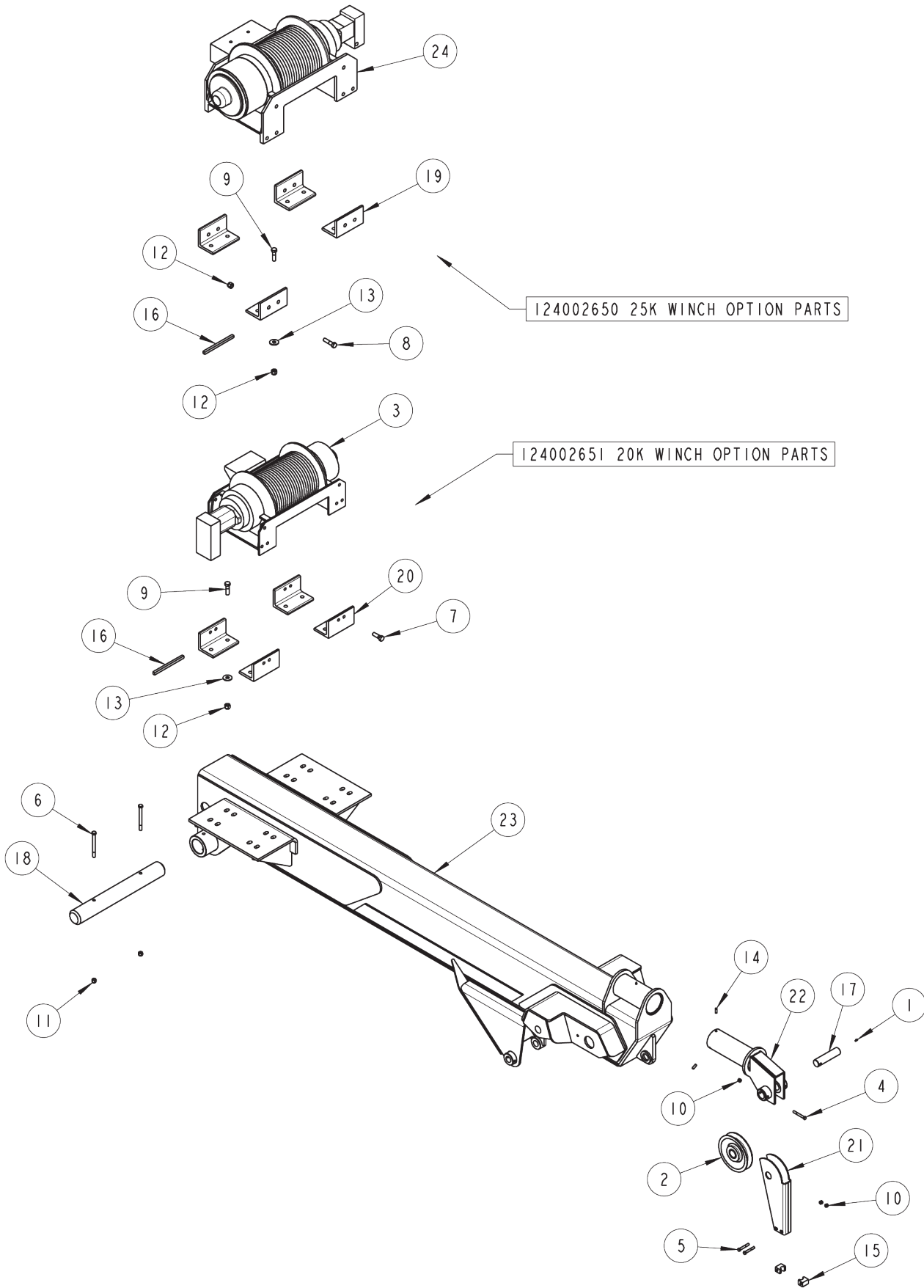
Section I - PARTS (cont'd)

SUBFRAME ASSEMBLY

| BILL OF MATERIAL | | | |
|------------------|---------|-----------------------------------|-----|
| ITEM | PART NO | DESCRIPTION | QTY |
| 1 | 0300113 | GREASE FITTING, 1/4-28 STRAIGHT | 8 |
| 2 | 0300331 | PLUNGER HANDLE | 4 |
| 3 | 0302538 | SPRING BUSHING, 3.50D X 3ID X 2.5 | 2 |
| 4 | 0304653 | SPRING - HEAVY DUTY CAMLOCK | 4 |
| 5 | 0307473 | LIFT CYLINDER - QUICK LIFT | 2 |
| 6 | 0400070 | 1/4-20 x 1 HHCS GR5 ZP | 4 |
| 7 | 0400122 | 3/8-16 X 1 1/4 HHCS GR.5, ZP | 2 |
| 8 | 0400288 | 3/4-10 x 2-1/2 HHCS GR.8 GOLD | 21 |
| 9 | 0400367 | 1/4-20 NYLOCK HEX NUT ZP | 4 |
| 10 | 0400408 | 1/2-13 NYLOCK HEX NUT ZP | 1 |
| 11 | 0400431 | 3/4-10 NYLOCK HEX NUT GR.8, ZP | 24 |
| 12 | 0400480 | 3/8 FLAT WASHER ZP | 3 |
| 13 | 0400482 | 3/8 HELICAL LOCK WASHER ZP | 2 |
| 14 | 0400561 | 5/32 x 3/4 ROLL PIN ZP | 4 |
| 15 | 0400563 | 3/16 x 1-3/4 ROLL PIN ZP | 4 |
| 16 | 0700526 | PLUNGER PIN | 2 |
| 17 | 0705046 | PLUNGER PIN | 2 |
| 18 | 0714581 | PLATE - BOLTING | 3 |
| 19 | 0718048 | PIN-LOWER TILT CYLINDER | 2 |
| 20 | 0723571 | VALVE COVER | 1 |
| 21 | 0804405 | BOOM PIVOT BRKT | 2 |
| 22 | 0806788 | SUBFRAME WELDMENT | 1 |
| 23 | 0806796 | PIN WELDMENT | 2 |
| 24 | 0806797 | REAR SUPPORT WLMT | 2 |
| 25 | 0806798 | FRONT LOCKDOWN WLMT | 1 |
| 26 | 0806811 | INNER VERT. LEG WLMT | 2 |
| 27 | 0807041 | STABILIZER LEG WLMT (LH) | 1 |
| 28 | 0807042 | STABILIZER LEG WLMT (RH) | 1 |
| 29 | 0902947 | PIN- RETAINER ASSY | 2 |
| 30 | 0910765 | VALVE ASSY - 12V WALVOIL | 1 |
| 31 | 9056150 | RETAINING RING, 1-1/2" | 4 |

Section I - PARTS (cont'd)

BOOM ASSEMBLY



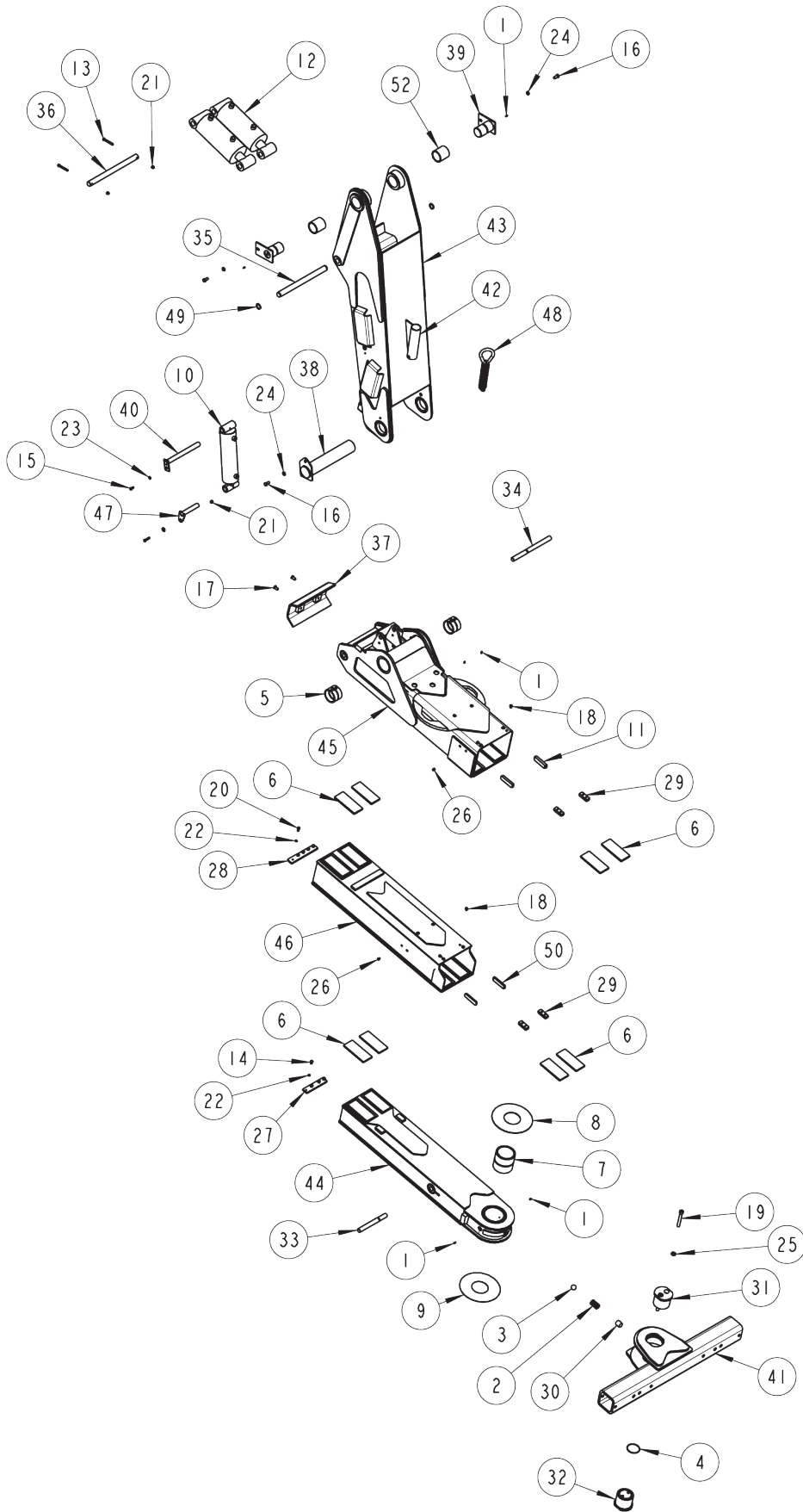
Section I - PARTS (cont'd)

BOOM ASSEMBLY

| BILL OF MATERIAL | | | |
|------------------|---------|---------------------------------|-----|
| ITEM | PART NO | DESCRIPTION | QTY |
| 1 | 0300113 | GREASE FITTING, 1/4-28 STRAIGHT | 2 |
| 2 | 0300626 | SHEAVE - 8" | 1 |
| 3 | 0303374 | WINCH - dp 20K | 1 |
| 4 | 0400133 | 3/8-16 X 3 HHCS GR.5,ZP | 1 |
| 5 | 0400150 | 3/8-16 x 2-1/2 HHCS GR5 ZP | 2 |
| 6 | 0400220 | 1/2-13 x 5-1/2 HHCS GR5 ZP | 2 |
| 7 | 0400260 | 5/8-11 x 2 HHCS GR5 ZP | 8 |
| 8 | 0400262 | 5/8-11 X 2 1/2 HHCS GR.8,ZP | 2 |
| 9 | 0400264 | 5/8-11 x 2-1/4 HHCS GR5 ZP | 10 |
| 10 | 0400392 | 3/8-16 NYLOCK HEX NUT ZP | 3 |
| 11 | 0400408 | 1/2-13 NYLOCK HEX NUT ZP | 2 |
| 12 | 0400426 | 5/8-11 NYLOCK NUT GR.8 ZP | 19 |
| 13 | 0400506 | 5/8 FLAT WASHER USS | 9 |
| 14 | 0400554 | 3/8 x 1 ROLL PIM ZP | 3 |
| 15 | 0700801 | BOTTOM CABLE GUIDE | 2 |
| 16 | 0713131 | SHEAR BLOCK | 8 |
| 17 | 0716134 | SHEAVE SHAFT | 1 |
| 18 | 0718043 | PIN - BOOM PIVOT | 1 |
| 19 | 0718045 | ANGLE - WINCH MOUNTING | 4 |
| 20 | 0718076 | ANGLE - WINCH MTG | 4 |
| 21 | 0800286 | CABLE GUIDE WELDMENT | 1 |
| 22 | 0804448 | BOOM END SWIVEL WELDMENT | 1 |
| 23 | 0806792 | OUTER BOOM WLMT - 5130/5230 | 1 |
| 24 | 9048241 | WINCH DP 25K | 1 |

Section I - PARTS (cont'd)

UNDERLIFT ASSEMBLY

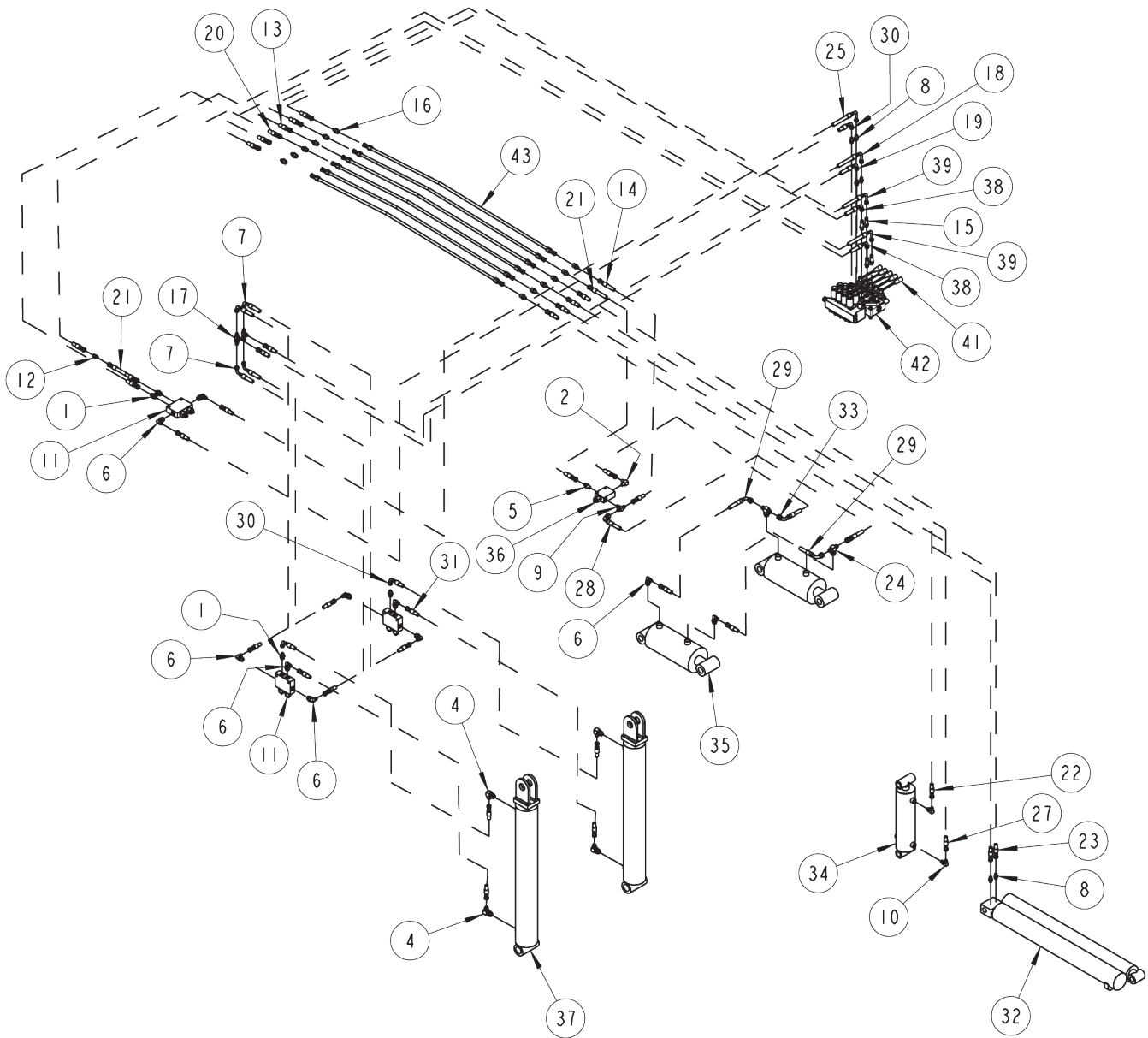


Section I - PARTS (cont'd)

UNDERLIFT ASSEMBLY

| BILL OF MATERIAL | | | |
|------------------|------------|---------------------------------------|-----|
| ITEM | PART NO | DESCRIPTION | QTY |
| 1 | 0300113 | GREASE FITTING, 1/4-28 STRAIGHT | 12 |
| 2 | 0301197 | DETENT SPRING | 1 |
| 3 | 0301398 | DETENT BALL | 1 |
| 4 | 0301822 | O-RING, PIVOT PIN | 1 |
| 5 | 0302538 | SPRING BUSHING, 3.50D X 3ID X 2.5 | 2 |
| 6 | 0302561 | SLIDE PAD | 8 |
| 7 | 0303088 | BUSHING, PIVOT PIN | 1 |
| 8 | 0303097 | THRUST WASHER, 1/8" THICK | 1 |
| 9 | 0303098 | THRUST WASHER, 1/16" THICK | 1 |
| 10 | 0306746 | CYLINDER, HYD LIFT | 1 |
| 11 | 0307013 | PAD - WEAR | 2 |
| 12 | 0307040 | CYL - U/L TILT | 2 |
| 13 | 0400133 | 3/8-16 X 3 HHCS GR.5,ZP | 2 |
| 14 | 0400147 | 3/8-24x 5/8 HHCS GR5 ZP | 4 |
| 15 | 0400151 | 3/8-24 x 3/4 HHCS GR5 ZP | 1 |
| 16 | 0400176 | 1/2-13 X 1 HHCS GR.5,ZP | 3 |
| 17 | 0400194 | 1/2-13 x 1 FLAT HEAD SOCKET CAP SCR | 2 |
| 18 | 0400228 | SCREW, 3/8"-24 X 5/8" BUTTON HEAD SKT | 8 |
| 19 | 0400271 | SCREW, 5/8"-11 X 4-1/2" SKT HD CAP | 2 |
| 20 | 0400347 | 3/8-24 x 7/8 HHCS GR5 ZP | 5 |
| 21 | 0400392 | 3/8-16 NYLOCK HEX NUT ZP | 5 |
| 22 | 0400481 | LOCKWASHER, 3/8" EXT TOOTH | 9 |
| 23 | 0400482 | 3/8 HELICAL LOCK WASHER ZP | 1 |
| 24 | 0400491 | 1/2 HELICAL LOCK WASHER ZP | 3 |
| 25 | 0400508 | 5/8 HELICAL LOCK WASHER ZP | 2 |
| 26 | 0400990 | 1/2-13 x 1/2 SKT HD SET SCREW ZP | 8 |
| 27 | 0706996 | SPACER PAD | 1 |
| 28 | 0707028 | PAD, BEARING | 1 |
| 29 | 0707034 | STOP PLATE | 4 |
| 30 | 0708470 | SPACER - DETENT BALL | 1 |
| 31 | 0710051 | PIVOT PIN, TOP HALF | 1 |
| 32 | 0710052 | PIVOT PIN, BOTTOM HALF | 1 |
| 33 | 0716745 | EXTEND CYLINDER SHAFT | 1 |
| 34 | 0716746 | EXTEND CYLINDER SHAFT | 1 |
| 35 | 0716870 | SHAFT | 1 |
| 36 | 0718044 | PIN - TILT CYL. BASE | 1 |
| 37 | 0718130 | SKID PLATE | 1 |
| 38 | 0802214 | PIN-UNDERLIFT PIVOT | 1 |
| 39 | 0802365 | PIN-TOWER PIVOT WLMT | 2 |
| 40 | 0802459 | PIN-FOLD CYL. WLDMT | 1 |
| 41 | 0802914 | CROSSBAR WELDMENT | 1 |
| 42 | 0804483 | CABLE TIE BACK WLMT | 1 |
| 43 | 0805884 | TOWER WLMT | 1 |
| 44 | 0805885 | 3rd STAGE BOOM WLMT | 1 |
| 45 | 0805894 | OUTER U/L BOOM WLMT | 1 |
| 46 | 0805895 | 2nd STAGE U/L BOOM WLMT | 1 |
| 47 | 0806756 | PIN WLMT - FOLD CYL | 1 |
| 48 | 0906572 | KIT - WINCH CABLE STOW | 1 |
| 49 | 9056125 | RETAINING RING, 1-1/4" NOM HEAVY DUTY | 2 |
| 50 | BK2003 | PAD-WEAR | 2 |
| 51 | OM_0303331 | TBD | 1 |
| 52 | RB0205 | SPLIT BUSHING | 2 |

Section I - PARTS (cont'd) DTU TOWER & UNDERLIFT HYDRAULICS

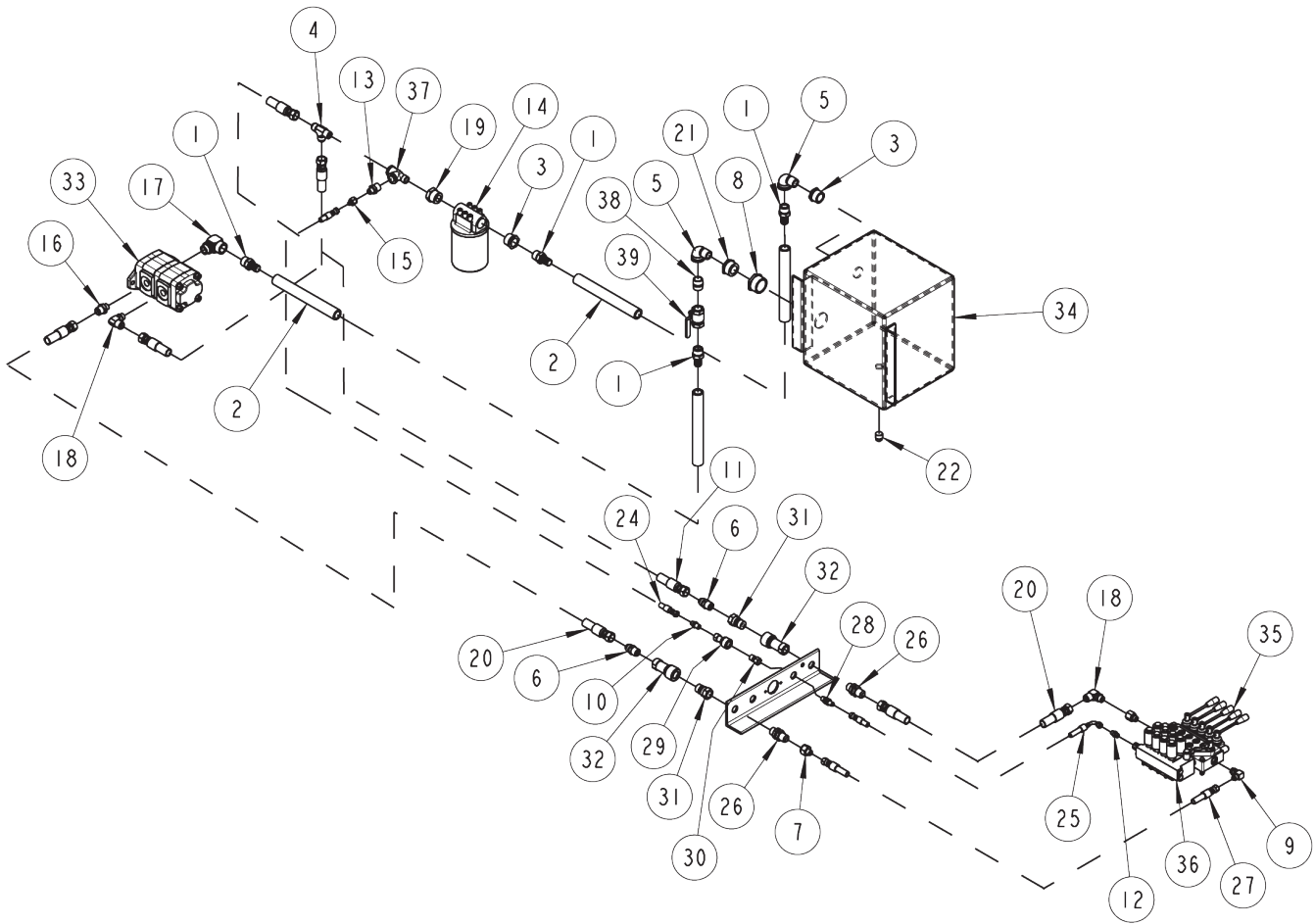


Section I - PARTS (cont'd)

DTU TOWER & UNDERLIFT HYDRAULICS

| BILL OF MATERIAL | | | |
|------------------|-----------|---------------------------------------|-----|
| ITEM | PART NO | DESCRIPTION | QTY |
| 1 | 0300044 | CONNECTOR 6MJx8MB | 4 |
| 2 | 0300142 | ELBOW, 6MJ-4MP90 | 1 |
| 3 | 0300387 | PLUG - 1/2 SAE O-RING | 1 |
| 4 | 0301388 | ELBOW, 8MJ-8MB90 | 5 |
| 5 | 0301425 | CONNECTOR, 6MJ-6MP | 1 |
| 6 | 0301470 | ELBOW, 6MJ-8MB90 | 10 |
| 7 | 0301473 | HOSE ASSEMBLY, 32" | 4 |
| 8 | 0301522 | CONNECTOR 6MJ-6MB | 7 |
| 9 | 0301619 | BRANCH TEE, 6MJ-6MJ-6MB | 1 |
| 10 | 0301620 | FITTING, ELBOW, 6MJ-6MB90 | 2 |
| 11 | 0301730 | DOUBLE HOLDING VALVE | 3 |
| 12 | 0301837 | INLINE ORIFICE | 1 |
| 13 | 0302000 | HOSE ASSY - 24" LG | 1 |
| 14 | 0302035 | 6FJX-6M3K-6FJX x 24" LG. | 1 |
| 15 | 0302510 | CONNECTOR, 6MJ-6MBL | 4 |
| 16 | 0302514 | ADAPTER, 8MJ-6MJ | 12 |
| 17 | 0302575 | BULKHEAD RUN TEE, 6MJ-6BLKHD-6MJ W/NU | 2 |
| 18 | 0302585 | HOSE ASSY - 54" LG | 1 |
| 19 | 0302586 | HOSE ASSEMBLY, 32" | 1 |
| 20 | 0302596 | HOSE ASSY - 34" LG | 1 |
| 21 | 0302805 | HOSE ASSY - 10" | 2 |
| 22 | 0302812 | HOSE ASSY - 78" LG. | 1 |
| 23 | 0302813 | HOSE ASSY - 108" LG | 2 |
| 24 | 0302842 | ELBOW, 8MJ-8MB90 | 2 |
| 25 | 0302883 | HOSE ASSY - 79" LG. | 1 |
| 26 | 0302901 | HOSE - HYD ASSY 120" LG | 1 |
| 27 | 0302911 | HOSE ASSY - 88" LG. | 1 |
| 28 | 0302914 | 8G 8FJX 90S | 1 |
| 29 | 0302915 | 8G 8FJX 90S | 2 |
| 30 | 0303170 | HOSE ASSY - 75" LG. | 3 |
| 31 | 0303188 | 6G 6FJX 90S | 2 |
| 32 | 0303331 | CYLINDER - U/L EXTEND | 1 |
| 33 | 0303561 | 8G 8FJX 90S | 1 |
| 34 | 0306746 | CYLINDER, HYD LIFT | 1 |
| 35 | 0307040 | CYL - U/L TILT | 2 |
| 36 | 0307107 | VALVE HOLDING 4000 PSI SAE | 1 |
| 37 | 0307473 | LIFT CYLINDER - QUICK LIFT | 2 |
| 38 | 0307524 | HOSE ASSEMBLY, 32" | 2 |
| 39 | 0307525 | HOSE ASSY - 120" LG | 2 |
| 40 | 0307569 | HOSE ASSY - 130" LG | 1 |
| 41 | 0310398 | HANDLE - DIVERTER VALVE | 7 |
| 42 | 0310844 | VALVE - 5-SPOOL 12V WALVOIL DTU | 1 |
| 43 | 916760001 | HYDRAULIC TUBE ASSY | 6 |

Section I - PARTS (cont'd)
PUMP, VALVE & FILTER HYDRAULICS



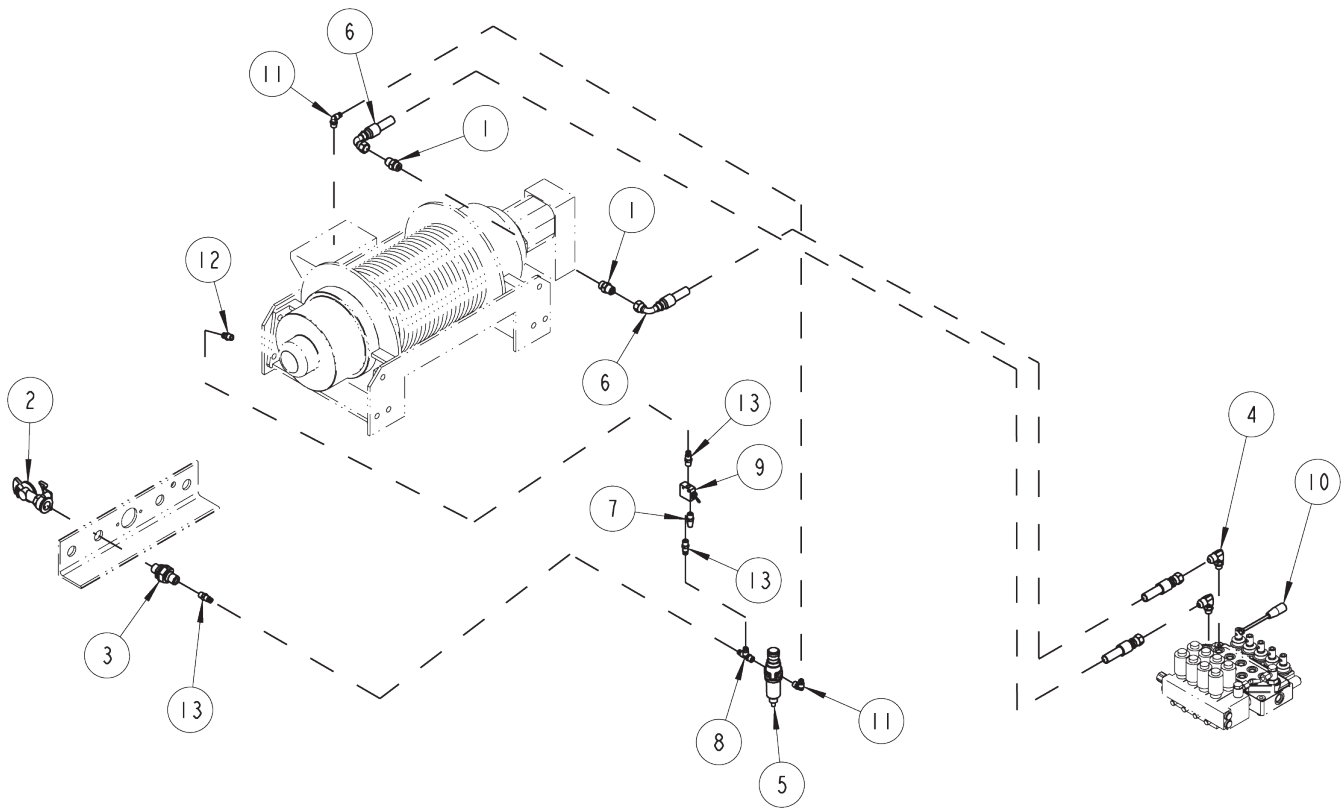
Section I - PARTS (cont'd)

PUMP, VALVE & FILTER HYDRAULICS

| BILL OF MATERIAL | | | |
|------------------|---------|--|-----|
| ITEM | PART NO | DESCRIPTION | QTY |
| 1 | 0300056 | BARB, 16C4-16MP | 4 |
| 2 | 0300058 | SUCTION HOSE, 1" I.D. 16C4 | 4 |
| 3 | 0300287 | PIPE BUSHING, 1 1/4" TO 1" NPT REDUCER | 2 |
| 4 | 0300553 | TEE - 12 MJ-12MP-12MJ | 1 |
| 5 | 0300692 | STREET ELBOW, 1" 90° | 2 |
| 6 | 0301092 | ADAPTER - 12MJ-12MP | 2 |
| 7 | 0301372 | ADAPTER, 12FJ-6MJ | 1 |
| 8 | 0301373 | BUSHING, 2MP-1-1/2FP | 1 |
| 9 | 0301388 | ELBOW, 8MJ-8MB90 | 1 |
| 10 | 0301425 | CONNECTOR, 6MJ-6MP | 1 |
| 11 | 0301438 | HOSE ASSY - 81" LG. | 1 |
| 12 | 0301522 | CONNECTOR 6MJ-6MB | 5 |
| 13 | 0301881 | CONNECTOR 8MJx8MB | 1 |
| 14 | 0301894 | FILTER ASSEMBLY, SPIN ON | 1 |
| 15 | 0301995 | ADAPTER, 8FJ-6MJ STRAIGHT | 1 |
| 16 | 0302082 | FITTING 12MJ-10MB | 1 |
| 17 | 0302084 | ELBOW, 16MB-16FB90 | 1 |
| 18 | 0302085 | FITTING 12MJ-10MB90 | 2 |
| 19 | 0302106 | REDUCER BUSHING - 20MP-12FP | 1 |
| 20 | 0302901 | HOSE - HYD ASSY 120" LG | 3 |
| 21 | 0302953 | BUSHING, 1-1/2MP-1FP | 1 |
| 22 | 0303155 | PIPE PLUG - 3/4 NPT (MAGNETIC) | 1 |
| 23 | 0303170 | HOSE ASSY - 75" LG. | 1 |
| 24 | 0303188 | 6G 6FJX 90S | 1 |
| 25 | 0303748 | HOSE ASSEMBLY, 32" | 1 |
| 26 | 0307527 | BULKHEAD - 12MJ-12MP (w/NUTS) | 2 |
| 27 | 0307569 | HOSE ASSY - 130" LG | 1 |
| 28 | 0307593 | BULKHEAD ADAPTER 6MJ-6MP-BLKHD | 1 |
| 29 | 0307594 | QUICK DISCONNECT - FEMALE | 1 |
| 30 | 0307595 | QUICK CONNECT - MALE | 1 |
| 31 | 0308138 | QUICK CONNECT - MALE | 2 |
| 32 | 0308139 | QUICK DISCONNECT - FEMALE | 2 |
| 33 | 0308169 | PUMP, BI-ROTATIONAL TSPKS-13-13-2BSSB | 1 |
| 34 | 0308246 | OIL TANK - 15 GAL. WLA4150 | 1 |
| 35 | 0310398 | HANDLE - DIVERTER VALVE | 7 |
| 36 | 0310844 | VALVE - 5-SPOOL 12V WALVOIL DTU | 1 |
| 37 | 9012945 | 3/4 NPT STREET TEE | 1 |
| 38 | HC1335 | PIPE NIPPLE 1" CLOSED THREAD | 1 |
| 39 | HC1338 | BALL VALVE, 1" BRASS | 1 |

Section I - PARTS (cont'd)

DTU WINCH HYDRAULICS & AIR FREE SPOOL



| BILL OF MATERIAL | | | |
|------------------|---------|------------------------------------|-----|
| ITEM | PART NO | DESCRIPTION | QTY |
| 1 | 0300041 | CONNECTOR 8MJx8MB | 2 |
| 2 | 0301944 | GLAD HAND COUPLING | 1 |
| 3 | 0301946 | FITTING - BULKHEAD CONNECTOR | 1 |
| 4 | 0302276 | ELBOW, 8MJ-6MB90 | 2 |
| 5 | 0303363 | AIR FILTER / REGULATOR COMBO | 1 |
| 6 | 0303391 | HOSE ASSY - 110" | 2 |
| 7 | 0303735 | BREATHER VENT- 1/4MP | 2 |
| 8 | 0306983 | FITTING - BRASS RUNTEE 1/4T-1/4MPX | 1 |
| 9 | 0307510 | AIR SWITCH - 3 WAY TOGGLE | 2 |
| 10 | 0310398 | HANDLE - DIVERTER VALVE | 7 |
| 11 | 9010520 | FITTING, BRASS ELB. 1/4T-1/4MP | 2 |
| 12 | 9011053 | Nipple-1/4 x 1/4 NPT | 1 |
| 13 | 9012538 | BREATHER VENT- 1/4MP | 5 |



Miller Industries Towing Equipment Inc.
8503 Hilltop Drive • Ooltewah, Tennessee 37363 • (423) 238-4171
www.millerind.com