

TITAN **T** SERIES



OWNER'S MANUAL

T-SERIES

OPERATION, MAINTENANCE & PARTS

**NOTE: MANUAL including SPECIFICATIONS, subject to change without notice
All ratings specified are based on structural factors only,
not vehicle capacities or capabilities.**

TITAN

8503 Hilltop Drive
Ooltewah, Tennessee 37363

Phone (423) 238-4171 • FAX (423) 238-5371

FORM NO. 0501154
(REV. A)
09 / 2009
PRICE \$25.00

LIMITED WARRANTY

MILLER INDUSTRIES TOWING EQUIPMENT INC., hereinafter referred to as MILLER, warrants to the original purchaser that each new MILLER wrecker or other MILLER products will be free from defects in material and workmanship for a period of twelve (12) months from date placed in service, but in no event shall such warranty period exceed twenty-four (24) months from date of manufacture by MILLER. The purchaser must promptly notify MILLER in writing of any failure in material or workmanship. In no event shall MILLER accept such notification later than twenty-four (24) months from date of delivery or twelve (12) months from date placed in service, whichever is earlier.

MILLER's obligation under this warranty, statutory or otherwise, is limited to the repair or replacement at the MILLER factory, or at a point designated by MILLER, of such part or parts as shall appear upon inspection by MILLER to be defective in material or workmanship. New or remanufactured parts will be used for any replacement at MILLER's option. This warranty is not transferable. This warranty does not obligate MILLER to bear the cost of labor or transportation charges in connection with the repair or replacement of any parts found to be defective, nor shall it apply to a product upon which repairs or alterations have been made unless authorized by MILLER.

EXCEPT AS EXPRESSLY SET FORTH IN THIS WARRANTY, MILLER MAKES NO OTHER WARRANTY, EXPRESS OR IMPLIED, AND HEREBY DISCLAIMS ALL OTHER WARRANTIES INCLUDING, BUT NOT LIMITED TO, THE IMPLIED WARRANTIES OF MERCHANTABILITY AND FITNESS FOR A PARTICULAR PURPOSE. MILLER shall in no event be liable for claimed downtime, claimed loss of profits or goodwill, or any other special, incidental, indirect, or consequential damages concerning or relating to any product or parts, whether based on negligence, strict liability, breach of contract, breach of warranty, misrepresentation or any other legal theory, regardless of whether the loss resulted from any general or particular requirement which MILLER knew or had reason to know about at the time of sale.

MILLER MAKES NO WARRANTY, EXPRESS OR IMPLIED, AS TO THE FINISHED PRODUCTS MANUFACTURED OR SUPPLIED BY ANOTHER MANUFACTURER AND SUPPLIED BY MILLER TO PURCHASER, including, but not limited to, any vehicle to which a MILLER product may be affixed or any accessories or wire rope, and MILLER EXPRESSLY DISCLAIMS ANY IMPLIED WARRANTIES OF MERCHANTABILITY OR FITNESS FOR A PARTICULAR PURPOSE AS TO SUCH EQUIPMENT OR PRODUCTS. This language shall in no way affect or diminish the rights of the purchaser to rely on such warranties as are extended by such manufacturers or suppliers. MILLER shall, to the extent permitted under applicable law, pass on to the purchaser such manufacturer's or seller's warranty.

MILLER, whose policy is one of continuous improvement, reserves the right to improve its products through changes in design or materials as it may deem desirable without being obligated to incorporate such changes in products previously sold. This warranty is not intended to cover or include the following items, which are set forth by way of example and not limitation:

- A. Normal deterioration of trim, paint, lettering, and appearance items due to wear or exposure to weather, road conditions, road treatments, etc.
- B. Any damage or defect due to accident, misuse, abuse, improper or unauthorized repairs, failure to provide reasonable and necessary maintenance, or uses for which the equipment was not designed or intended.
- C. Alterations or modifications that affect performance, operation or reliability.
- D. Normal maintenance parts including, but not limited to, wear pads, bushings, wire rope, mud flaps, fenderettes, light bulbs, hydraulic oil, filters, and tow sling belts.

IT IS EXPRESSLY UNDERSTOOD THAT MILLER MAKES NO IMPLIED WARRANTY THAT MILLER PRODUCTS SHALL BE FIT FOR THE PURPOSE OF LIFTING OR MOVING PEOPLE OR FOR ANY OTHER IMPROPER USE.



Miller Industries Towing Equipment Inc.
8503 Hilltop Drive
Ooltewah, Tennessee 37363

Telephone (423) 238-4171

SERIAL NUMBER

TABLE OF CONTENTS



The operator must read and understand all instructions in this manual before operating the unit.

It is assumed by the manufacturer that the Owner/Operator has thorough knowledge of the accepted and lawful retrieval and transport methods as dictated by his city, county or state. Miller Industries Towing Equipment Inc. rejects any liability claim that may result from the incorrect or unlawful application of its equipment.

Section I - SAFETY PRECAUTIONS	I-1 thru I-4
Section II - SPECIFICATIONS	II-1 & II-2
Section III - OPERATIONAL FUNCTIONS	III-1 & III-2
Section IV - OPERATING INSTRUCTIONS	IV-1 thru IV-5
Section V - MAINTENANCE	V-1 thru V-3
Section VI - PARTS LIST	VI-1 thru VI-6
Section VII - SCHEMATICS	VII-1 thru VII-6

Section I - SAFETY PRECAUTIONS

- 1.1 Improper use of this equipment can be dangerous! Incorrect operation can result in bodily injury to the operator and bystanders. Therefore, a thorough understanding of the "operating principles" and "operating instructions" as found in this manual is essential.
- 1.2 Study each job to be done. Apply common sense judgment to assure safety to yourself and bystanders.
- 1.3 Plan ahead. Work safely. Avoid accidental damage and injury. If an accident or fire does occur, react quickly with the tools and skills at hand. Know how to use a first aid kit and a fire extinguisher - and where to get assistance.
- 1.4 Read and understand the following instructions.



1. READ THE OPERATION AND MAINTENANCE MANUAL FOR WARNINGS AND PRECAUTIONS.
2. NEVER TAKE ANYTHING FOR GRANTED. DON'T ASSUME THAT EVERYTHING IS ALL RIGHT AT THE START OF WORK TODAY JUST BECAUSE EVERYTHING SEEMED ALL RIGHT AT THE END OF WORK YESTERDAY. BEFORE BEGINNING OPERATION, THOROUGHLY INSPECT THE ENTIRE TRANSPORT TO BE SURE IT IS IN GOOD OPERATING CONDITION.
3. VISUALLY INSPECT THE TRANSPORT FOR EVIDENCE OF PHYSICAL DAMAGE, SUCH AS CRACKING, BENDING, OR DEFORMATION OF PLATES OR WELDS. INSPECT CAREFULLY FOR CRACKING OR FLAKING OF PAINT, WHICH MAY INDICATE A DANGEROUS CRACK IN THE STRUCTURE BENEATH. DO NOT OPERATE UNTIL REPAIRS ARE MADE.
4. LOOSE OR MISSING HARDWARE, BOLTS, NUTS, AND PINS SHOULD BE PROPERLY TIGHTENED OR REPLACED WITH MANUFACTURER'S SPECIFIED HARDWARE.
5. CHECK ALL TIE DOWN CHAINS, TIE DOWN RATCHETS AND OTHER TIE DOWN RELATED DEVICES.

Section I - SAFETY PRECAUTIONS (cont'd)

- 6. CHECK FOR FLUID LEAKS. HYDRAULIC SYSTEM LEAKS MUST BE CORRECTED BEFORE THE TRANSPORT IS OPERATED. INSPECT ALL HYDRAULIC HOSES, ESPECIALLY THOSE WHICH FLEX OR MOVE IN SERVICE, AND REPLACE IF NECESSARY. SECURE ALL CAPS AND FILLER PLUGS FOR ALL SYSTEMS.**
- 7. YOUR CLOTHING SHOULD BE RELATIVELY CLOSEFITTING.**
- 8. ALWAYS WEAR PROTECTIVE ITEMS SUCH AS SAFETY GLASSES, GLOVES, REFLECTIVE CLOTHING AND SAFETY SHOES.**
- 9. DO NOT LOAD THE TRANSPORT EXCEPT ON SOLID, LEVEL SURFACE WITH THE TRUCK AND TRANSPORT BRAKES LOCKED.**
- 10. OPERATE ALL CONTROLS SLOWLY AND SMOOTHLY TO AVOID DAMAGE TO TRANSPORT OR INJURY TO PERSONNEL.**
- 11. DO NOT OPERATE, WALK OR STAND BEHIND TRANSPORT OR CRAWL UNDER A SUSPENDED DECK.**
- 12. NEVER EXTEND THE TRANSPORT RAMPS OVER ANYONE.**
- 13. DO NOT USE THE TRANSPORT TO MOVE PEOPLE.**
- 14. FOR TRAVEL, THE RAMPS MUST BE IN STOWED POSITION AND PTO, IF SO EQUIPPED, DISENGAGED.**
- 15. RAMPS ARE MADE FOR LOADING ONLY AND ARE NOT INTENDED FOR TRANSPORTING VEHICLES.**
- 16. ENSURE THAT ALL VEHICLES PLACED ON THE TRANSPORT ARE IN PARK WITH THE PARKING BRAKE APPLIED BEFORE EXITING THE VEHICLE.**
- 17. ENSURE THAT SAFETY PINS ARE ALWAYS INSTALLED.**
- 18. ENSURE THAT CARGO WEIGHT IS PROPERLY DISTRIBUTED AND ADEQUATELY SECURED.**
- 19. ENSURE THAT CARGO WEIGHT DOES NOT REST ON HYDRAULIC SYSTEM COMPONENTS.**

Section I - SAFETY PRECAUTIONS (cont'd)

- 20.** USE EXTREME CAUTION WHEN USING THE LADDERS PROVIDED FOR ASCENDING OR DESCENDING FROM THE UPPER PORTIONS OF THE HEAD RACK OR TRANSPORT.
- 21.** DO NOT WALK ON UPPER DECKS TO ASCEND OR DESCEND FROM TOP OF TRANSPORT. USE LADDERS, STEPS AND WALKWAYS PROVIDED FOR THAT PURPOSE TO PREVENT POSSIBLE INJURY.
- 22.** PROPERLY SECURE ALL TIE DOWN CHAINS WHEN NOT IN USE TO PREVENT DAMAGE TO CHAINS OR CARGO.
- 23.** ENSURE THAT ALL UNLOADING AND AUXILIARY RAMPS ARE IN PLACE AND SECURED BEFORE MOVING TRANSPORT.
- 24.** PTO MUST BE TURNED OFF BEFORE DISCONNECTING HYDRAULIC HOSES FROM TRAILER.
- 25.** TRANSPORT GROUND CLEARANCE IS LOW. USE CAUTION WHEN CROSSING RAILROAD TRACKS OR OTHER HIGH SPOTS IN ROADWAY.
- 26.** NON-SKID DECK COATING SHOULD BE KEPT CLEAN AND FREE OF OIL AND DEBRIS.
- 27.** KEEP TRAILER BRAKES ADJUSTED IF NOT EQUIPPED WITH AUTOMATIC SLACK ADJUSTERS.
- 28.** FOLLOW TIRE MANUFACTURER'S RECOMMENDATIONS FOR TIRE INFLATION PRESSURE. (120 PSI COLD)
- 29.** ALWAYS LOWER TOP DECKS TO THE LOWEST POSSIBLE ANGLE AND LOAD VEHICLES ON TOP DECK OF TRANSPORT FIRST. AFTER VEHICLES ARE PROPERLY SECURED, HYDRAULICALLY RAISE TOP DECKS, INSTALL SAFETY PINS, AND THEN LOAD VEHICLES ON LOWER DECKS OF TRANSPORT. AFTER LOADING, LOWER ALL DECKS TO TRANSPORT POSITION, INSTALL ALL SAFETY PINS, AND CHECK OVERALL HEIGHT OF LOAD.
- 30.** DO NOT EXCEED 2500 PSI IN HYDRAULIC SYSTEM, AS THIS CAN CAUSE SYSTEM DAMAGE AND POSSIBLE INJURY.

Section I - SAFETY PRECAUTIONS (cont'd)



WARNING

ONLY AUTHORIZED AND TRAINED PERSONNEL SHOULD BE PERMITTED TO OPERATE THIS TRANSPORT UNSUPERVISED.

TRAINED PERSONNEL ARE THOSE WHO HAVE WORKED UNDER EXPERIENCED SUPERVISION AND HAVE PERFORMED ALL TRANSPORT MANEUVERS, HAVE READ THE MOUNTING, OPERATING AND MAINTENANCE MANUAL, WARNINGS AND PRECAUTIONS, AND UNDERSTAND AND HAVE HAD EXPLAINED TO THEM BY THEIR EMPLOYER THE HAZARDS OF OPERATING THE TRANSPORT. THEY MUST BE FAMILIAR WITH THE HAZARDS OF OPERATING AT A SITE WHERE ELECTRIC POWER LINES, IRREGULAR GROUND CONTOUR, WATER, ICE, MUD, OR OTHER CONDITIONS CAN INTERFERE WITH ORDINARY CAREFUL OPERATION OF THIS TRANSPORT.

AN UNTRAINED OPERATOR SUBJECTS HIMSELF AND OTHERS TO DEATH OR SERIOUS INJURY.



WARNING

USE FOUR (4) TIE-DOWN CHAINS ON EACH VEHICLE!

Section II - SPECIFICATIONS

2.1 T-SERIES STANDARD FEATURES & SPECIFICATIONS

- Quick Load, High Mount Design
- 53' Short Neck Multi-Vehicle Design T7-S
- 53' Long Neck Multi-Vehicle Design T7-L
- 102" Wide for Easy Access
- Hydraulic Floating Front Tipper Deck
- Hydraulic Rear Loading Ramp
- Hydraulic Belly Ramp
- Upper Deck Rear Flipper Ramps with Chain Trees
- Hydraulic Drop and Raise Upper Mid-Deck
- Steel Welded Deck Construction
- Anti-Slip Deck Coating
- Adjustable Front Landing Legs
- One Piece Steel Bulkhead
- 4 Built-In Ladders with Anti-Slip Coating
- Tie Down Bar
- 4 Drop Pockets in Belly for Increased Payload Height (Aluminum Inserts)
- Double Plated 6' Tie Down Chains with Hook Clusters
- 42 Quick Release Tie Down Ratchets
- Double Plated 8' Tie Down Chains with Hook Clusters (Front, Middle, and Rear)
- Chain Trees and Guides on Inside Ramps
- Custom Parker Hannifan Hydraulic Valves
- Trailer Suspension Dump Valve for Lower Loading Height
- Plumbed for Wet Kit with Quick Disconnect Fittings
- A.B.S. Air Brakes
- Two 22,500 lb. Axles
- Low Maintenance Air-Ride Suspension (Ridewell)
- 19.5" Radial Tires with Aluminum Wheels (Outside Only)
- 4 Lower Load Lights
- Height Stick Storage Tube
- Steel Hydraulic Cylinders with Safety Pins
- Upper Deck Safety Catwalks
- Baked-On Urethane Top Coat with Epoxy Primer (Dupont)
- Warranty Provided by Nationwide Dealer Network

Section II - SPECIFICATIONS (cont'd)

2.2 T-SERIES OPTIONAL FEATURES

- Head Rack with Front Hydraulic Drop Position
- Front Removable Chain Bar
- Spare Wheel and Tire (Steel or Aluminum)
- Wheel and Tire Mounting Bracket
- Standard or Extra LED Light Package
- Stainless Steel Trim Package
- Hydraulic Wet Kit for Tractor
- Self Contained Electric-Hydraulic Power Unit
- Self Contained Gas-Hydraulic Power Unit
- Lockable Storage Box (Steel or Aluminum)
- Hydraulic Drop Belly Ramp
- Height Measuring Stick
- Additional Marker Lights
- Removable Electric Winch Kit
- Wireless Remote Kit (Winch)
- 22.5" Radial Tires with Aluminum Wheels (Outside Only)
- Suspension Lift Kit (Electric or Manual)

NOTE: Specifications subject to change without notice. All ratings specified are based on structural factors only, not vehicle capacities or capabilities.

Actual number of vehicles hauled may vary due to vehicles length, height, weight and/or road restrictions. Check local, state and federal road laws to determine legal limitations of load.

Section III - OPERATIONAL FUNCTIONS

- 3.1** Your new Transport is fully hydraulic. It receives its power from either the wet kit attached to the truck chassis or optional power unit mounted on the transport.
- 3.2** The functions of your Transport are controlled from the front and rear control stations located on the passenger side of the Transport body. See Figures 3.1 and 3.2.

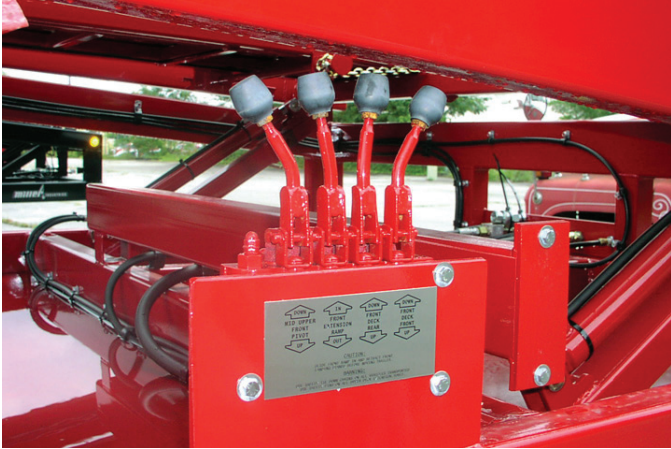


FIGURE 3.1 (FRONT CONTROLS)

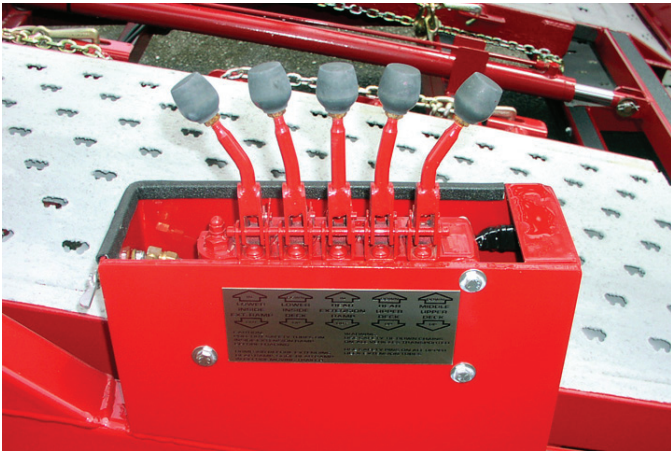


FIGURE 3.2 (REAR CONTROLS)

Section III - OPERATIONAL FUNCTIONS (cont'd)

- 3.3 The Control Handles are clearly identified as to functions and directions. Movement of the control handles meters the flow of oil through the valve to control the speed of each function.
- 3.4 The Transport upper decks and extension ramps are elevated and extended by means of double-acting hydraulic cylinders and can be operated under either "LOAD" or "NO LOAD" conditions.
- 3.5 Thirty-eight (38) Quick Release Ratchets and Tie-Down Chain Assemblies are provided on the Transport. See Figure 3.3.



FIGURE 3.3

- 3.6 Four (4) Quick Release Ratchets and Tie-Down Chain Assemblies are provided on the optional Cab Rack.



WARNING

**USE FOUR (4) TIE-DOWN CHAINS
ON EACH VEHICLE!**

Section IV - OPERATING INSTRUCTIONS

- 4.1** For reasons of safety, it is important that the Owner/Operator(s) of the Transport be thoroughly familiar with its controls, components and loading requirements before attempting any operation.

4.2 LOAD PLACEMENT

Loads on the Transport should be placed in such a manner that the axle weights do not exceed the axle ratings (GAWR) specified by the chassis manufacturer.

4.3 SECURING LOADS FOR TRANSPORT

- (a) Before transporting, all vehicles should be securely fastened to the Transport. For this reason, ratchet tie-down chain assemblies are provided.
- (b) Ensure that tie-down chains are pulling in opposite directions on each vehicle.
- (c) All vehicles must be secured properly to eliminate bounce in transit and to prevent damage caused by vehicles striking upper decks.
- (d) All vehicles should be placed in gear (PARK) with the parking brake applied.

4.4 LOADING VEHICLES ON TRANSPORT

- (a) Reduce engine speed to an idle and apply the truck and trailer parking brakes. Depress the truck clutch, place the transmission in neutral and engage the PTO, if so equipped.
- (b) Remove safety pins and push the UPPER DECK control levers to lower the upper decks to their lowest positions. See Figures 4.1 and 4.2.

Section IV - OPERATING INSTRUCTIONS (cont'd)

4.4 LOADING VEHICLES ON TRANSPORT (cont'd)



FIGURE 4.1



FIGURE 4.2

Section IV - OPERATING INSTRUCTIONS (cont'd)

4.4 LOADING VEHICLES ON TRANSPORT (cont'd)

- (c) Engage the dump valve located on the rear control station to lower transport by exhausting the suspension air bags. See Figure 4.3.



FIGURE 4.3

- (d) Push the rear EXTENSION RAMP control lever and extend the ramp.
- (e) Position vehicle on Transport and secure with four (4) tie-down chains.



Section IV - OPERATING INSTRUCTIONS (cont'd)

4.4 LOADING VEHICLES ON TRANSPORT (cont'd)



CAUTION

DO NOT OVERTIGHTEN TIE-DOWN CHAINS.



WARNING

NEVER PUSH ON THE TIE-DOWN BAR TO TIGHTEN TIE-DOWN CHAINS. KEEP ALL BODY PARTS AWAY FROM THE TRAVEL ARCH OF THE TIE-DOWN BAR.

- (f) After all vehicles have been positioned on upper decks, ensure there is sufficient clearance between vehicles before operating hydraulics.
- (g) Pull the UPPER DECK control levers and raise the upper decks as necessary for loading the lower deck. Engage safety pins on all upper deck extension tubes.



WARNING

ALWAYS INSTALL SAFETY PINS AFTER RAISING UPPER DECKS.

- (h) Position vehicles on lower deck and secure each vehicle with four (4) tie-down chains.
- (i) After all vehicles have been positioned on lower decks and secured with tie-down chains, carefully lower all upper decks to transit position and install safety pins.

Section IV - OPERATING INSTRUCTIONS (cont'd)

4.4 LOADING VEHICLES ON TRANSPORT (cont'd)

- (j) Secure all unused tie-down chains.
- (k) Slide rear extension ramp in completely before moving transport.
- (l) Disengage the dump valve to raise transport to correct travel height by inflating the suspension air bags. Refer to Figure 4.3. Follow chassis manufacturers instructions on T5 transport.

MAINTENANCE

5.1 The continued operation of your Transport is largely dependent upon adherence to a properly scheduled maintenance program. For this reason, we have provided the following information regarding lubrication, preventative maintenance and hydraulic system care.

5.2 HYDRAULIC SYSTEM

The importance of absolute cleanliness of the hydraulic system cannot be over stressed. The smallest amount of grit, metal flake or other foreign material in the system can cause extensive damage to pumps, motors and valves. We have taken every measure to assure that each component and fitting was thoroughly cleaned before your Transport was shipped to you. Therefore, servicing of the system should be done with extreme care.

- (a) Before checking oil level in reservoir, wipe away all dirt, grease and grime around filter cap before removing it. Make certain that all containers, funnels and pouring spouts are absolutely clean before filling reservoir.
- (b) When replacing hoses, fittings or other components, clean thoroughly, dismantle and reassemble carefully.
- (c) Failure to observe these precautions, and failure to change the filter elements at regular intervals could result in loss of your warranty in the event of failure to certain components.

5.3 LUBRICATION & PREVENTIVE MAINTENANCE

The following general lubrication and preventive maintenance should be performed at least once per month for moderate usage, or more often as required, for heavy usage.

- (a) Inspect, repair or replace any worn, cracked, leaking, otherwise damaged components including, but not limited to, the following:
 - 1. **Hydraulic Oil Filter**
 - 2. **Oil Reservoir**
 - 3. **Controls**
 - 4. **Hydraulic Hoses and Fittings**

MAINTENANCE (cont'd)

5.3 LUBRICATION & PREVENTIVE MAINTENANCE (cont'd)

- 5. **Lights and Wiring**
- 6. **Ratchets and Tie-Down Chains**

- (b) Check hydraulic oil level in reservoir and fill to proper level with Multi-Purpose Automatic Transmission Fluid, formally known as MERCON / DEXRON III. Hydraulic oil should be replaced annually.
- (c) Replace hydraulic filter after the first week of operation, then every three (3) months thereafter.
- (d) Upper deck support tubes require SLIP-PLATE® dry film lubricant (or equivalent) application to ensure smooth operation.
- (e) Deck pivot pins, ratchet pawls and springs require anti-seize to ensure smooth operation.
- (f) Refer to Ridewell Owner's Manual for scheduled axle maintenance.
- (g) Torque wheel lug nuts to 450-500 ft-lbs. every 90 days.

NOTE

THERE IS NO PRACTICAL WAY TO DETERMINE THE LIFE EXPECTANCY OF HYDRAULIC HOSES AND OTHER RUBBER COMPONENTS.

WHILE APPEARING TO BE IN EXCELLENT CONDITION, THESE COMPONENTS MAY BE ADVERSELY AFFECTED BY USAGE, WEATHER OR THE PASSING OF TIME.

THEREFORE, IT IS RECOMMENDED THAT ALL RUBBER COMPONENTS, ESPECIALLY HOSES, BE REPLACED EVERY FIVE (5) YEARS REGARDLESS OF APPEARANCE.

MAINTENANCE (cont'd)

5.4 CARE OF HYDRAULICS IN COLD CLIMATE

When the Transport is used in seasonal cold climate regions (+20° F. and below), the viscosity of the normally recommended SAE 10W non-foaming oil may increase to the point where it adversely affects the hydraulic functions during starting and warm-up.

If this is the case, it will be necessary to change fluids seasonally to maintain maximum system efficiency and life.

Regions subject to continuous sub-zero or arctic climates require special fluids. Contact your local oil supplier for information regarding specific temperature requirements.

Section VI - PARTS

This Section is provided by the manufacturer for the purpose of ordering any component part of the **TITAN T Series Transport** that may be required when part replacement is necessary. Be certain to use only original equipment replacement parts for warranty purposes as well as for keeping your **TITAN T Series Transport** in its original state and optimum operating capacities.

When ordering replacement or spare parts be sure to provide the following information to the manufacturer's **Parts Department**.

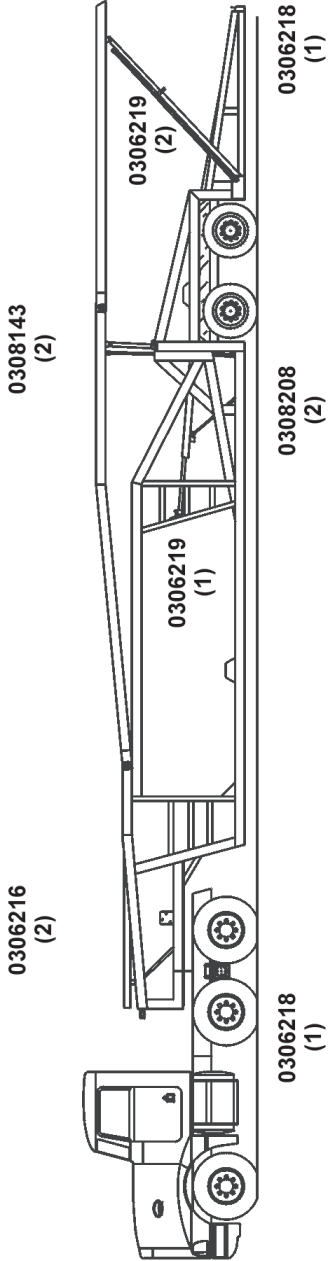
1. **Manual Number & Date of Publication**
2. **Manual Page Number**
3. **Page Title**
4. **Reference Number of Part Desired**
5. **Part Number**
6. **Part Description**
7. **Quantity of Part Desired**

Providing this information will help ensure that the correct parts will be delivered to you in an expedient manner without delay. Should additional information be required for repair or replacement of certain components, contact your Wrecker Manufacturer Authorized Representative.

The Manufacturer reserves the right, without notice or obligation, to improve or modify their products, which may change the specifications, models and feature availability.

Section VI - PARTS (cont'd)

TITAN T-SERIES CYLINDER LOCATIONS



Section VI - PARTS (cont'd)

TITAN T-SERIES REPLACEABLE PARTS LIST

REF. NO.	NO. REQ'D	PART NUMBER	DESCRIPTION
--	--	--	ABS
1	1	0306201	LABEL "ABS"
2	1	0306202	LABEL ABS - WARN LIGHT
3	2	0306203	CABLE GRIP ABS BRAKE
4	2	0306204	SENSOR "ABS" ABS BRAKE
5	1	0306205	HARNES WIRE 4MM ABS BRAKE
6	1	0306206	MANUAL INSTALLATION ABS BRAKE
7	1	0306207	VALVE 4 PORT ABS BRAKE
8	1	0306208	LIGHT BRACKET MOUNT
--	--	--	BRACKETS
9	10	0306185	CYLINDER BRACKET
10	6	0306148	CAM LOCK (3/4") - NO SHOULDER
11	6	0308175	CYLINDER BRACKET L
12	4	0721005	BRACKET SAFETY TUBE
13	2	0721093	TRIM GUARD FOR 53' TRAILER
14	4	0808414	3" X 3" CAM LOCK WELDMENT
--	--	--	CHAINS & ACCESSORIES
15	1	0306509	24" WINCH BAR
16	42	0308125	6 FT CHAIN ASSEMBLY
--	--	--	CYLINDERS
17	2	0306216	CYLINDER, 24" FRONT UPPER DECK
18	*	0306217	CYLINDER, 42" MID UPPER DECK (REPLACED BY 0308143)
19	2	0306218	CYLINDER, 92" FRONT & REAR RAMP
20	3	0306219	CYLINDER, 60" REAR UPPER DECK
21	2	0308143	CYLINDER, 43-1/2" MID UPPER DECK
22	2	0308208	CYLINDER, 11" LOWER INSIDE DECK
23	--	0308231	CYLINDER SEAL KIT (GREEN)
	--	0309126	CYLINDER SEAL KIT (HOL-MAC)
--	--	--	CYLINDER & DECK PINS
24	1	0306183	PIN POST SELF LOCK
25	1	0306184	PIN POST SELF LOCK
26	22	0306186	PIN, 3/4" X 3"
27	4	0306187	PIN, 3/4" X 3-1/8"
28	4	0306188	PIN, 3/4" X 4"
29	6	0306189	PIN, 3/4" X 5"
30	2	0306191	PIN, 5/8" X 4" STA-LOCK
31	38	0400539	COTTER PIN, 3/16" X 1-1/2" ZINC
32	4	0805543	PIVOT PIN WELDMENT

Section VI - PARTS (cont'd)

TITAN T-SERIES REPLACEABLE PARTS LIST

REF. NO.	NO. REQ'D	PART NUMBER	DESCRIPTION
--	--	--	GLADHAND
33	1	0306220	GLADHAND BLUE
34	1	0306221	GLADHAND RED
--	--	--	GROMMETS & LIGHTS
35	1	0300273	PLASTIC LICENSE PLATE
36	4	0301390	LIGHT, STOP & TURN
37	18	0301740	GROMMET, MARKER LIGHT
38	4	0301741	MARKER LIGHT, RED
39	14	0301742	MARKER LIGHT, AMBER
40	6	0304127	GROMMET, STOP & TURN LIGHT
41	2	0306192	LIGHT, SIDE TURN MID TR
42	1	0306208	LIGHT BRACKET MOUNT
43	2	0306230	REFLECTOR, 3" ROUND
44	4	0306384	LIGHT, BACK-UP
45	2	0720602	TAIL LIGHT MOUNTING PLATE
46	1	0720681	PLATE MTG SENSOR
--	--	--	HYDRAULICS
47	8	0300341	KNOB W/L XBAR CONTROL 40A
48	1	0301415	VALVE BODY, 2 SPL VDP11DD103
49	8	0301566	HANDLE, CONTROL WELDMENT
50	1	0302179	VALVE BODY, 5 SPL VDP11DDDD44
51	1	0305075	VALVE BODY, 1 SPL VDP11D102
--	--	0905428	HYD HOSE KIT (T-8)
52	6	0300044	HYD FITTING, 6MJ-8MB
53	2	0300052	HYD FITTING, 8MJ-10MB90 ELBOW
54	2	0301092	FITTING, MALE ADAPTER 12MJ-12MP
55	1	0301330	HYD FITTING, 12MJ-12FJX90
56	1	0301372	HYD FITTING, 12FJ-8MJ
57	8	0301377	HYD FITTING, 6MJ-TEE
58	9	0301388	HYD FITTING, 8MJ-8MB 90 DEG
59	1	0301422	HYD FITTING, 6MJ-6MJ SMALL
60	2	0301545	HYD FITTING, 12MJ-12MB90 ELBOW
61	1	0302082	FITTING, STR ADAPTER 12MJ-10MB
62	11	0302695	HYD FITTING, 6MJ-4MB
63	1	0302826	FITTING, TEE 12MJ-12FJX-12MJ
64	11	0308153	HYD FITTING, 6MJ-4MB45
65	1	0309022	HOSE ASSEMBLY, 105-1/2"
66	1	0309023	HOSE ASSEMBLY, 19-1/4"
67	2	0309024	HOSE ASSEMBLY, 12-3/8"

Section VI - PARTS (cont'd)

TITAN T-SERIES REPLACEABLE PARTS LIST

REF. NO.	NO. REQ'D	PART NUMBER	DESCRIPTION
--	--	0905428	HYD HOSE KIT (T-8) (cont'd)
68	1	0309025	HOSE ASSEMBLY, 45-1/2"
69	1	0309026	HOSE ASSEMBLY, 57-1/4"
70	1	0309027	HOSE ASSEMBLY, 5-3/4"
71	1	0309028	HOSE ASSEMBLY, 99"
72	1	0309029	HOSE ASSEMBLY, 58-1/2"
73	1	0309030	HOSE ASSEMBLY, 52-1/4"
74	1	0309031	HOSE ASSEMBLY, 144-1/2"
75	1	0309032	HOSE ASSEMBLY, 231-3/4"
76	1	0309033	HOSE ASSEMBLY, 39-3/4"
77	1	0309034	HOSE ASSEMBLY, 67-3/4"
78	1	0309035	HOSE ASSEMBLY, 236-3/4"
79	1	0309036	HOSE ASSEMBLY, 99-1/2"
80	1	0309037	HOSE ASSEMBLY, 133"
81	1	0309038	HOSE ASSEMBLY, 234-3/4"
82	1	0309039	HOSE ASSEMBLY, 279"
83	1	0309040	HOSE ASSEMBLY, 184"
84	1	0309041	HOSE ASSEMBLY, 239"
85	1	0309042	HOSE ASSEMBLY, 489-1/2"
86	1	0309043	HOSE ASSEMBLY, 382-1/4"
87	1	0309044	HOSE ASSEMBLY, 94-1/4"
88	1	0309045	HOSE ASSEMBLY, 9-3/8"
89	1	0309046	HOSE ASSEMBLY, 380"
90	1	0309047	HOSE ASSEMBLY, 43"
91	1	0309048	HOSE ASSEMBLY, 42"
92	1	0309049	HOSE ASSEMBLY, 119"
93	1	0309050	HOSE ASSEMBLY, 88"
94	1	0309051	HOSE ASSEMBLY, 31-1/4"
95	1	0309052	HOSE ASSEMBLY, 14"
96	1	0309053	HOSE ASSEMBLY, 131"
97	1	0309054	HOSE ASSEMBLY, 138"
98	1	0309055	HOSE ASSEMBLY, 8"
99	1	0309056	HOSE ASSEMBLY, 70"
100	1	0309057	HOSE ASSEMBLY, 72"
101	1	0309058	HOSE ASSEMBLY, 9"
102	1	0309059	FITTING, HYD TEE 12MJ 12MJ 12MJ
103	6	0309060	MALE CONNECTOR, AIR BRAKE 1468X6
104	4	0309061	UNION TEE, AIR BRAKE 1464X6
105	2	0309062	MALE CONNECTOR, AIR BRAKE 1468X8X4
106	1	0309063	MALE PIPE ELBOW, 6MP-4MP90
107	1	0309064	HEX HEAD PIPE PLUG 3152X6
108	1	0309065	O-RING PIPE ADAPTER 10MB-8FP

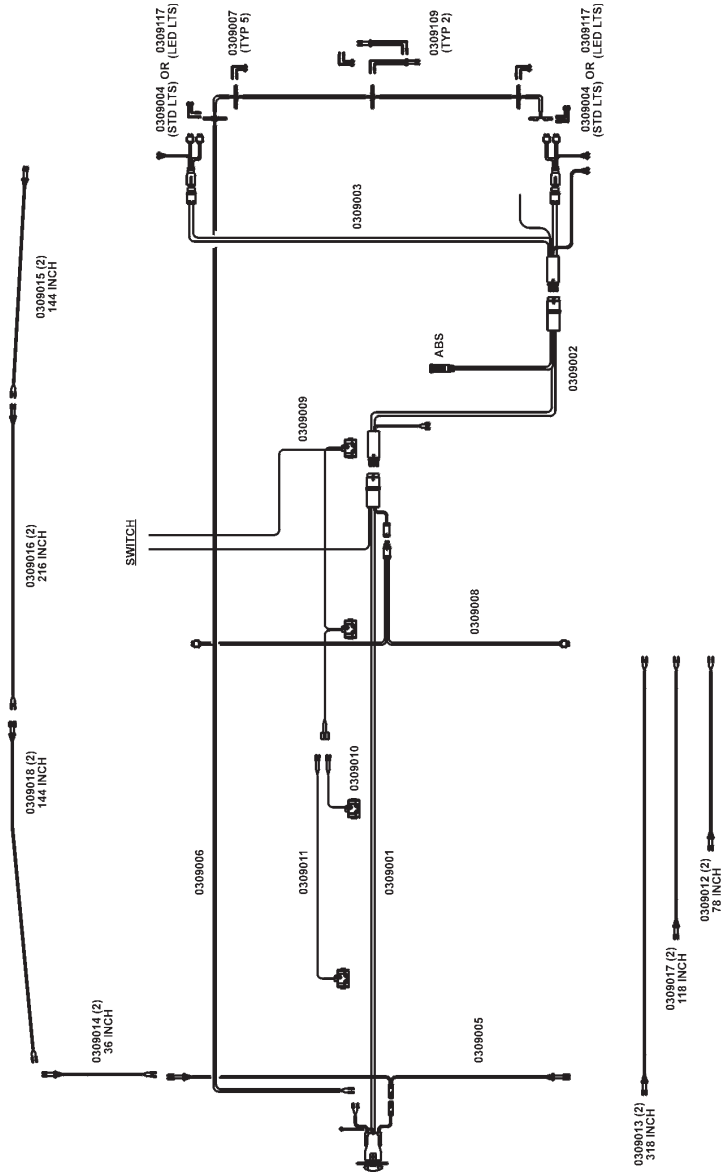
Section VI - PARTS (cont'd)

TITAN T-SERIES REPLACEABLE PARTS LIST

REF. NO.	NO. REQ'D	PART NUMBER	DESCRIPTION
--	--	0905428	HYD HOSE KIT (T-8) (cont'd)
109	1	0309066	FEM JIC MALE PIPE, 12FJX-8MP
110	1	0309067	3/4" QD PLUG FPT 6-A-31
111	1	0309068	3/4" QD SOCKET FPT 6-I-31
--	--	--	RATCHET ITEMS
112	42	0308185	COMPRESSION SPRING
113	84	0403015	WASHER FLAT .717 ID .892 OD SS
114	42	0403016	PIN SPIROL 1/8 X 7/8 SS
115	21	0721073	QUICK RELEASE PIN, LH
116	21	0721074	QUICK RELEASE PIN, RH
117	21	0808008	QUICK RELEASE RATCHET WELDMNT, LH
118	21	0808007	QUICK RELEASE RATCHET WELDMNT, RH
119	21	0306150	RATCHET ASSEMBLY
120	21	0306151	RATCHET ASSEMBLY
121	42	0306152	PAWL
122	42	0306153	RATCHET PIN
123	42	0720601	WASHER PAD 2-1/2" OD X 1/4" THK
124	42	0720655	RATCHET PIPE CAP PLATE
125	1	0805539	WELDMNT RATCHET BAR, RH 29"
126	1	0805540	WELDMNT RATCHET BAR, LH 29"
127	3	0805588	WELDMNT RATCHET BAR, LH 34-1/4"
128	3	0805589	WELDMNT RATCHET BAR, RH 34-1/4"
129	18	0805590	WELDMNT RATCHET BAR, LH 30-1/4"
130	18	0805591	WELDMNT RATCHET BAR, RH 30-1/4"
--	--	--	SAFETY TUBES
131	2	0720527	MID INNER SAFETY TUBE
132	2	0805542	REAR OUTER SAFETY TUBE WELDMNT
133	2	0808411	REAR INNER SAFETY TUBE WELDMNT
--	--	--	TAPES
134	50 FT.	0306227	TAPE CONSPICUITY
135	20 FT.	0306228	TAPE CONSPICUITY

Section VII - SCHEMATICS

T-SERIES ELECTRICAL



NOTE: FOR 2002 AND NEWER UNITS. THIS IS A SEALED HARNESS GROUND SYSTEM. OLDER UNITS ARE CHASSIS GROUND LOOMED WIRE.

Section VII - SCHEMATICS (cont'd)
T-SERIES ELECTRICAL
OPTIONAL KIT FOR EXTRA MARKERS



0309012
(TYP 16)



0309017
(TYP 4)

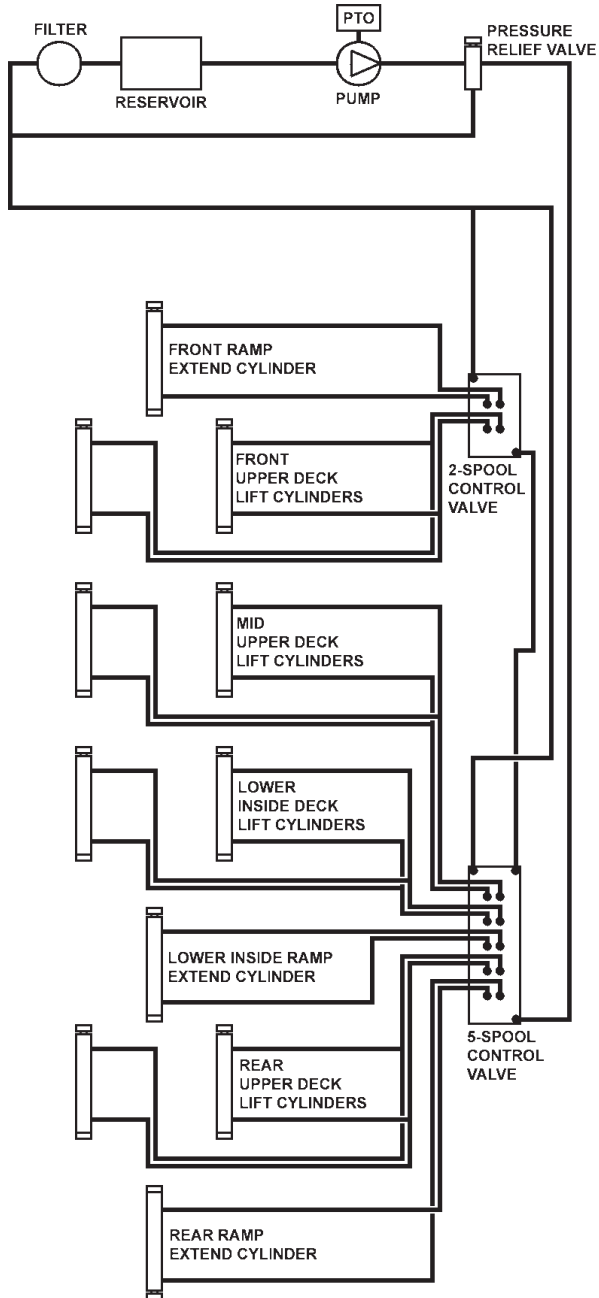


0309015
(TYP 2)

NOTE: FOR 2002 AND NEWER UNITS. THIS IS A SEALED HARNESS GROUND SYSTEM. OLDER UNITS ARE CHASSIS GROUND LOOMED WIRE.

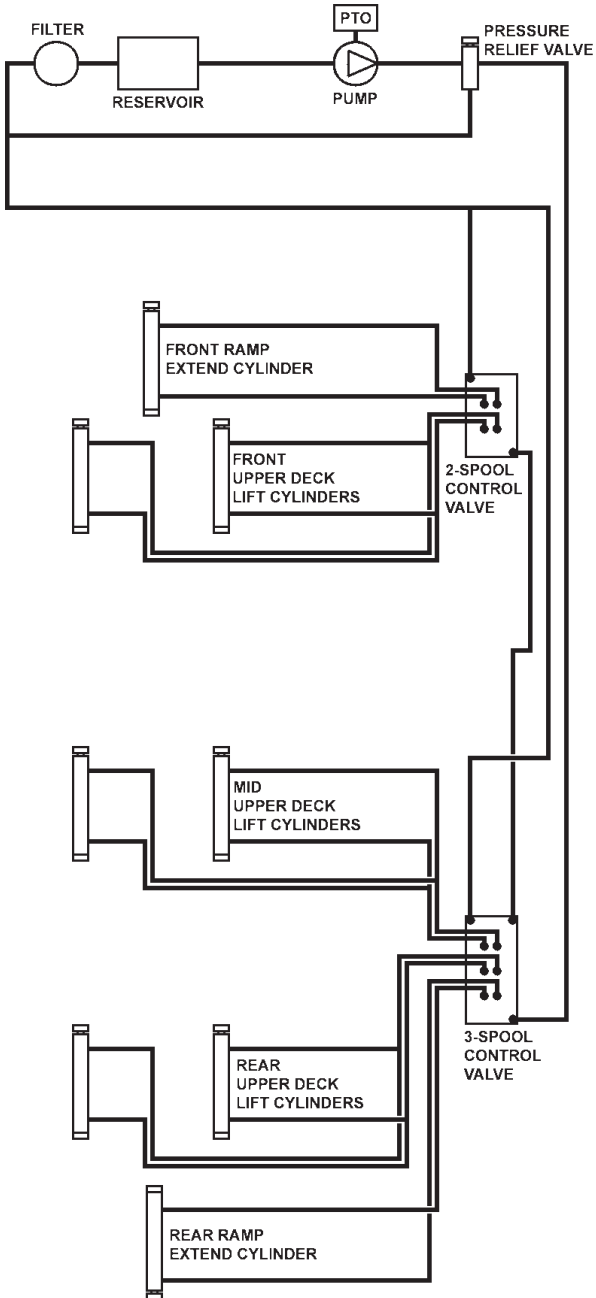
Section VII - SCHEMATICS (cont'd)

T-7L HYDRAULICS



Section VII - SCHEMATICS (cont'd)

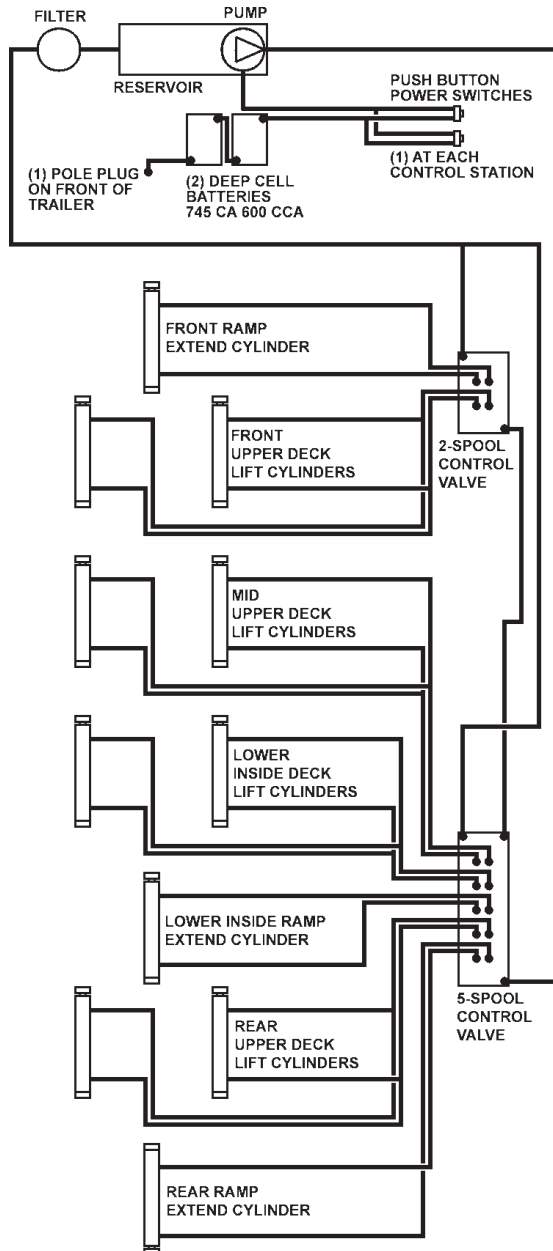
T-7S HYDRAULICS



Section VII - SCHEMATICS (cont'd)

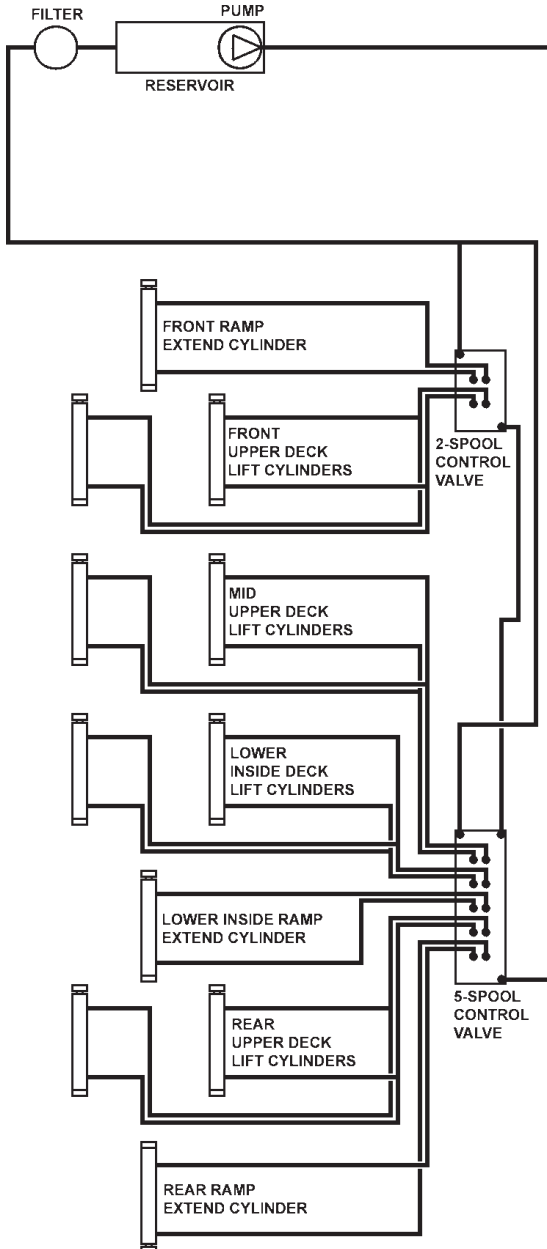
T-7 HYDRAULICS

ELECTRIC OVER HYDRAULIC



Section VII - SCHEMATICS (cont'd)

T-7 GAS POWERED HYDRAULICS



TITAN

8503 Hilltop Drive • Ooltewah, Tennessee 37363 • (423) 238-4171
www.millerind.com

TITAN

8503 Hilltop Drive • Ooltewah, Tennessee 37363 • (423) 238-4171
www.millerind.com