

OWNER'S MANUAL

V-70 MILITARY CROSSBAR & NATO ADAPTERS PARTS

**NOTE: MANUAL including SPECIFICATIONS subject to change without notice.
All ratings specified are based on structural factors only, not vehicle capacities or capabilities.**

Miller Industries Towing Equipment Inc.
8503 Hilltop Drive
Ooltewah, Tennessee 37363
Phone (423) 238-4171 • FAX (423) 238-5371

FORM NO. 05005947
11 / 2024
Price \$25.00

LIMITED WARRANTY

MILLER INDUSTRIES TOWING EQUIPMENT INC., hereinafter referred to as MILLER, warrants to the original purchaser that each new MILLER wrecker or other MILLER products will be free from defects in material and workmanship for a period of twelve (12) months from date placed in service, but in no event shall such warranty period exceed twenty-four (24) months from date of manufacture by MILLER. The purchaser must promptly notify MILLER in writing of any failure in material or workmanship. In no event shall MILLER accept such notification later than twenty-four (24) months from date of delivery or twelve (12) months from date placed in service, whichever is earlier.

MILLER's obligation under this warranty, statutory or otherwise, is limited to the repair or replacement at the MILLER factory, or at a point designated by MILLER, of such part or parts as shall appear upon inspection by MILLER to be defective in material or workmanship. New or remanufactured parts will be used for any replacement at MILLER's option. This warranty is not transferable. This warranty does not obligate MILLER to bear the cost of labor or transportation charges in connection with the repair or replacement of any parts found to be defective, nor shall it apply to a product upon which repairs or alterations have been made unless authorized by MILLER.

EXCEPT AS EXPRESSLY SET FORTH IN THIS WARRANTY, MILLER MAKES NO OTHER WARRANTY, EXPRESS OR IMPLIED, AND HEREBY DISCLAIMS ALL OTHER WARRANTIES INCLUDING, BUT NOT LIMITED TO, THE IMPLIED WARRANTIES OF MERCHANTABILITY AND FITNESS FOR A PARTICULAR PURPOSE. MILLER shall in no event be liable for claimed downtime, claimed loss of profits or goodwill, or any other special, incidental, indirect, or consequential damages concerning or relating to any product or parts, whether based on negligence, strict liability, breach of contract, breach of warranty, misrepresentation or any other legal theory, regardless of whether the loss resulted from any general or particular requirement which MILLER knew or had reason to know about at the time of sale.

MILLER MAKES NO WARRANTY, EXPRESS OR IMPLIED, AS TO THE FINISHED PRODUCTS MANUFACTURED OR SUPPLIED BY ANOTHER MANUFACTURER AND SUPPLIED BY MILLER TO PURCHASER, including, but not limited to, any vehicle to which a MILLER product may be affixed or any accessories or wire rope, and MILLER EXPRESSLY DISCLAIMS ANY IMPLIED WARRANTIES OF MERCHANTABILITY OR FITNESS FOR A PARTICULAR PURPOSE AS TO SUCH EQUIPMENT OR PRODUCTS. This language shall in no way affect or diminish the rights of the purchaser to rely on such warranties as are extended by such manufacturers or suppliers. MILLER shall, to the extent permitted under applicable law, pass on to the purchaser such manufacturer's or seller's warranty.

MILLER, whose policy is one of continuous improvement, reserves the right to improve its products through changes in design or materials as it may deem desirable without being obligated to incorporate such changes in products previously sold. This warranty is not intended to cover or include the following items, which are set forth by way of example and not limitation:

- A. Normal deterioration of trim, paint, lettering, and appearance items due to wear or exposure to weather, road conditions, road treatments, etc.
- B. Any damage or defect due to accident, misuse, abuse, improper or unauthorized repairs, failure to provide reasonable and necessary maintenance, or uses for which the equipment was not designed or intended.
- C. Alterations or modifications that affect performance, operation or reliability.
- D. Normal maintenance parts including, but not limited to, wear pads, bushings, wire rope, mud flaps, fenderettes, light bulbs, hydraulic oil, filters, and tow sling belts.

IT IS EXPRESSLY UNDERSTOOD THAT MILLER MAKES NO IMPLIED WARRANTY THAT MILLER PRODUCTS SHALL BE FIT FOR THE PURPOSE OF LIFTING OR MOVING PEOPLE OR FOR ANY OTHER IMPROPER USE.



Miller Industries Towing Equipment Inc.
8503 Hilltop Drive
Ooltewah, Tennessee 37363
Telephone (423) 238-4171

SERIAL NUMBER

<p>OWNER, USER AND OPERATOR:</p>

We appreciate your choice of our towing and recovery unit for your application. Our number one priority is user safety which is best achieved by our joint efforts. We feel that you can make a major contribution to safety if you, as the equipment owner and operator:

- 1. Comply with Federal, State, and Local Regulations.**
- 2. Read, Understand, and Follow the Instructions in this Manual.**
- 3. Use Good, Safe Work Practices in a Common Sense Way.**
- 4. Only have Authorized and Trained Personnel performing maintenance on the Towing and Recovery Unit.**

TABLE OF CONTENTS

It is assumed by the manufacturer that the Owner/Operator has a thorough knowledge of the accepted and lawful retrieval and towing methods as dictated by his city, county or state. The manufacturer rejects any liability claim that may result from the incorrect or unlawful application of its equipment.

Section I - PARTS

29389042, CROSSBAR SUBASSEMBLY	I-2 thru I-5
• Crossbar Hub Weldment, Lock Pins, Top/Bottom Cap Plates, Pivot Pin & Bronze Bearings	I-2 & I-3
• Crossbar Subassembly, Pivot Washers & Top/Bottom Collars	I-4 & I-5
 29389044, CROSSBAR SUBASSEMBLY	 I-6 & I-7
 29389052, PIN - CROSSBAR LOCK	 I-8 & I-9
 09020774, KIT, OFFSET FORK ADAPTER ADDON	 I-10 & I-11
 31859030, PINTLE BRACKET KIT	 I-12 thru I-15
• Pintle Hook & Bracket Mounting	I-12 & I-13
• Pintle Bracket Weldment & Pins	I-14 & I-15
 124001948, KING PIN ATTACHMENT (MALE)	 I-16 & I-17
 124001833, 5TH WHEEL ADAPTER KIT	
• 0902782, ADAPTER - FIFTH WHEEL	I-18 & I-19
 30498079, EXTENSION BAR - SMALL	 I-20 & I-21

Section I - PARTS

REF. 05005947

This Section is provided by the manufacturer for the purpose of ordering any component part of the **Vulcan V-70 MILITARY CROSSBAR & NATO ADAPTERS** that may be required when part replacement is necessary. Be certain to use only original equipment replacement parts for warranty purposes as well as for keeping your unit in its original state and optimum operating capacities.

When ordering replacement or spare parts be sure to provide the following information to the manufacturer's **Parts Department**.

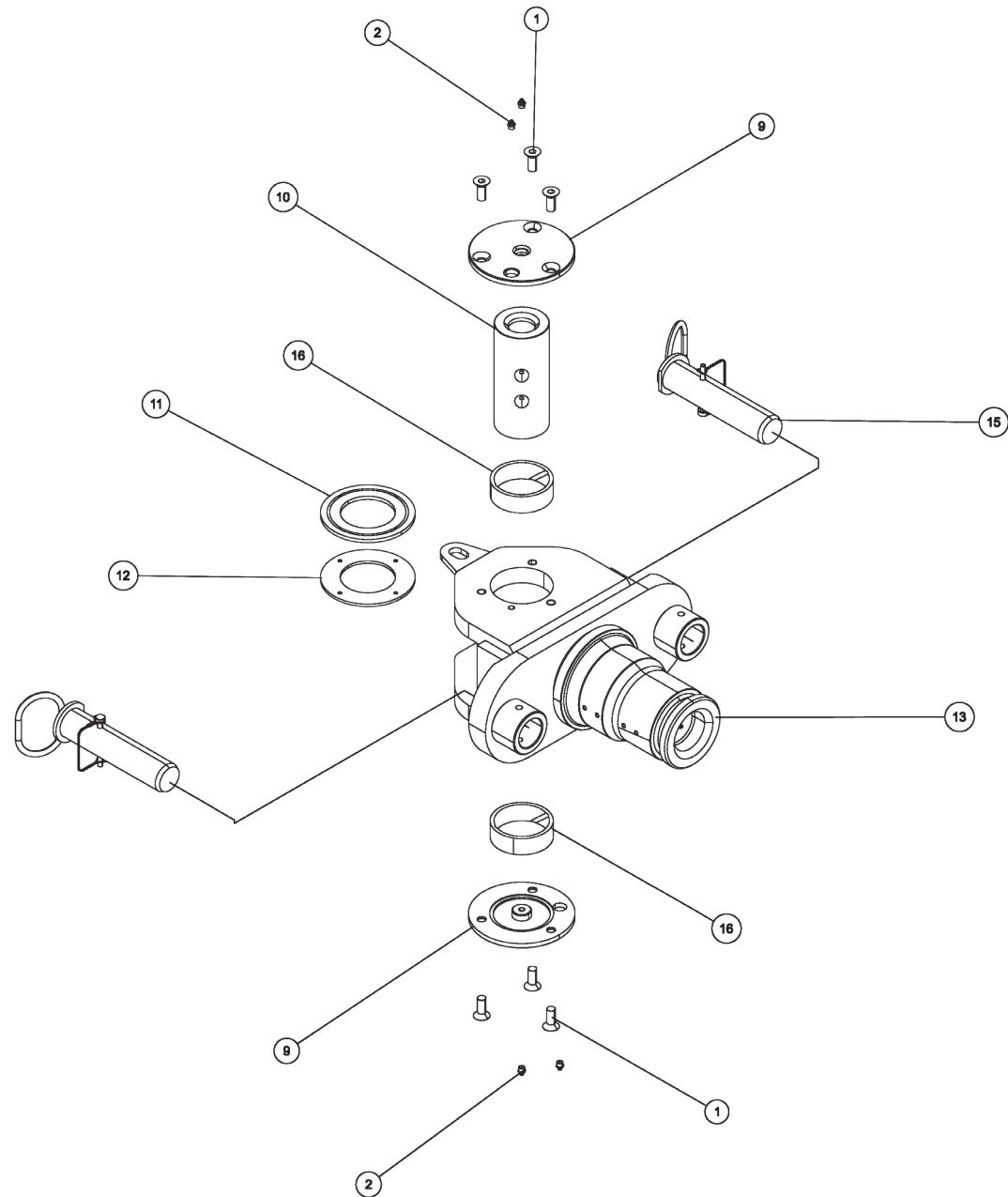
1. **Manual Number & Date of Publication**
2. **Manual Page Number**
3. **Page Title**
4. **Reference Number of Part Desired**
5. **Part Number**
6. **Part Description**
7. **Quantity of Part Desired**
8. **Unit Serial Number**

Providing this information will help ensure that the correct parts will be delivered to you in an expedient manner without delay. Should additional information be required for repair or replacement of certain components, contact your Wrecker Manufacturer Authorized Representative.

The Manufacturer reserves the right, without notice or obligation, to improve or modify their products, which may change the specifications, models and feature availability.

Section I - PARTS

29389042, CROSSBAR SUBASSEMBLY



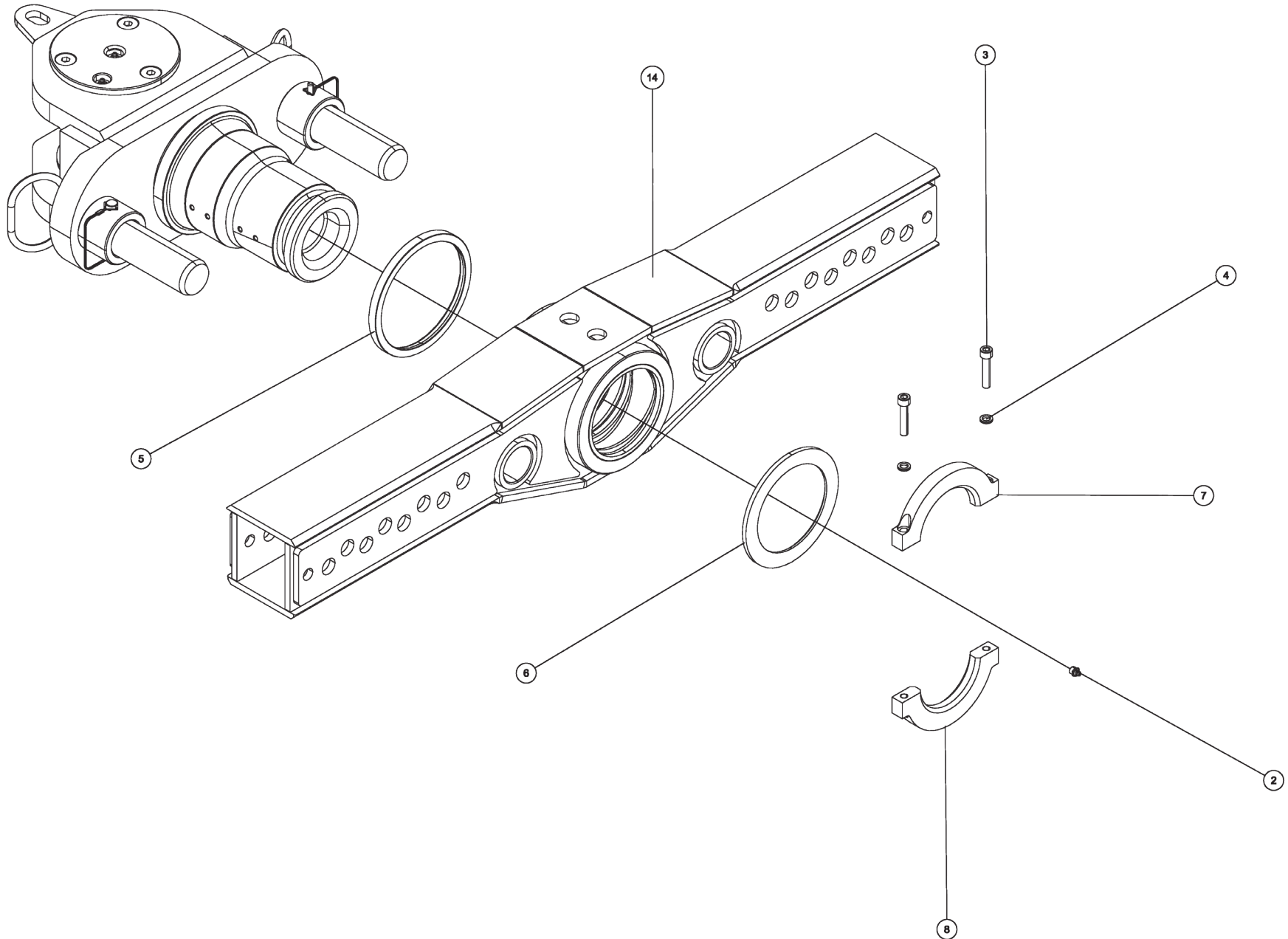
Section I - PARTS

29389042, CROSSBAR SUBASSEMBLY (cont'd)

ITEM	PART NUMBER	DESCRIPTION	QTY
--	29389042	CROSSBAR SUBASSEMBLY	
1	0400781	SCREW, M14-2X35 FHS	6
2	0410412	GREASE FITTING, M10-1.0 STR SS	5
3	0410555	SCREW, M10-1.5X50 SHC 10.9	2
4	0410713	LKWASHER, M10 NL	2
5	26687398	WASHER LARGE XBAR PIVOT	1
6	26687399	WASHER XBAR PIVOT	1
7	26687400	COLLAR TOP	1
8	26687401	COLLAR-BOTTOM	1
9	29387794	PLATE -TOP-BOTTOM CAPS	2
10	29387809	PIN - CROSSBAR PIVOT	1
11	29387810	THRUST WASHER --UPPER	1
12	29387822	THRUST WASHER LOWER	1
13	29388101	CROSSBAR HUB WELDT	1
14	29389044	XBAR SUBASSY	1
15	29389052	PIN - CROSSBAR LOCK	2
16	945510006	BEARING - ALUM. BRONZE	2

Section I - PARTS

29389042, CROSSBAR SUBASSEMBLY (cont'd)



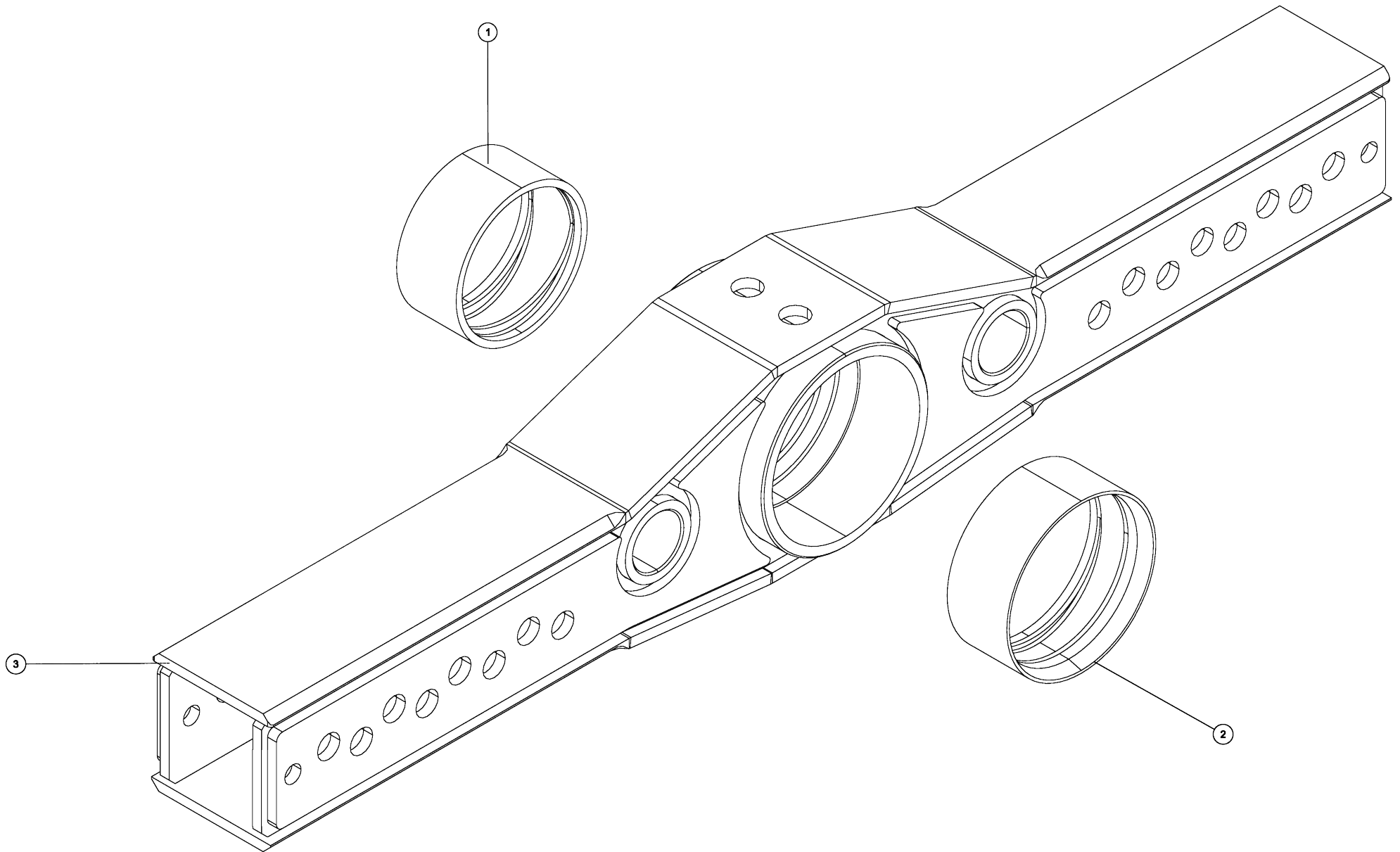
Section I - PARTS

29389042, CROSSBAR SUBASSEMBLY (cont'd)

ITEM	PART NUMBER	DESCRIPTION	QTY
--	29389042	CROSSBAR SUBASSEMBLY	
1	0400781	SCREW, M14-2X35 FHS	6
2	0410412	GREASE FITTING, M10-1.0 STR SS	5
3	0410555	SCREW, M10-1.5X50 SHC 10.9	2
4	0410713	LKWASHER, M10 NL	2
5	26687398	WASHER LARGE XBAR PIVOT	1
6	26687399	WASHER XBAR PIVOT	1
7	26687400	COLLAR TOP	1
8	26687401	COLLAR-BOTTOM	1
9	29387794	PLATE -TOP-BOTTOM CAPS	2
10	29387809	PIN - CROSSBAR PIVOT	1
11	29387810	THRUST WASHER --UPPER	1
12	29387822	THRUST WASHER LOWER	1
13	29388101	CROSSBAR HUB WELDT	1
14	29389044	XBAR SUBASSY	1
15	29389052	PIN - CROSSBAR LOCK	2
16	945510006	BEARING - ALUM. BRONZE	2

Section I - PARTS

29389044, CROSSBAR SUBASSEMBLY



Section I - PARTS

29389044, CROSSBAR SUBASSEMBLY (cont'd)

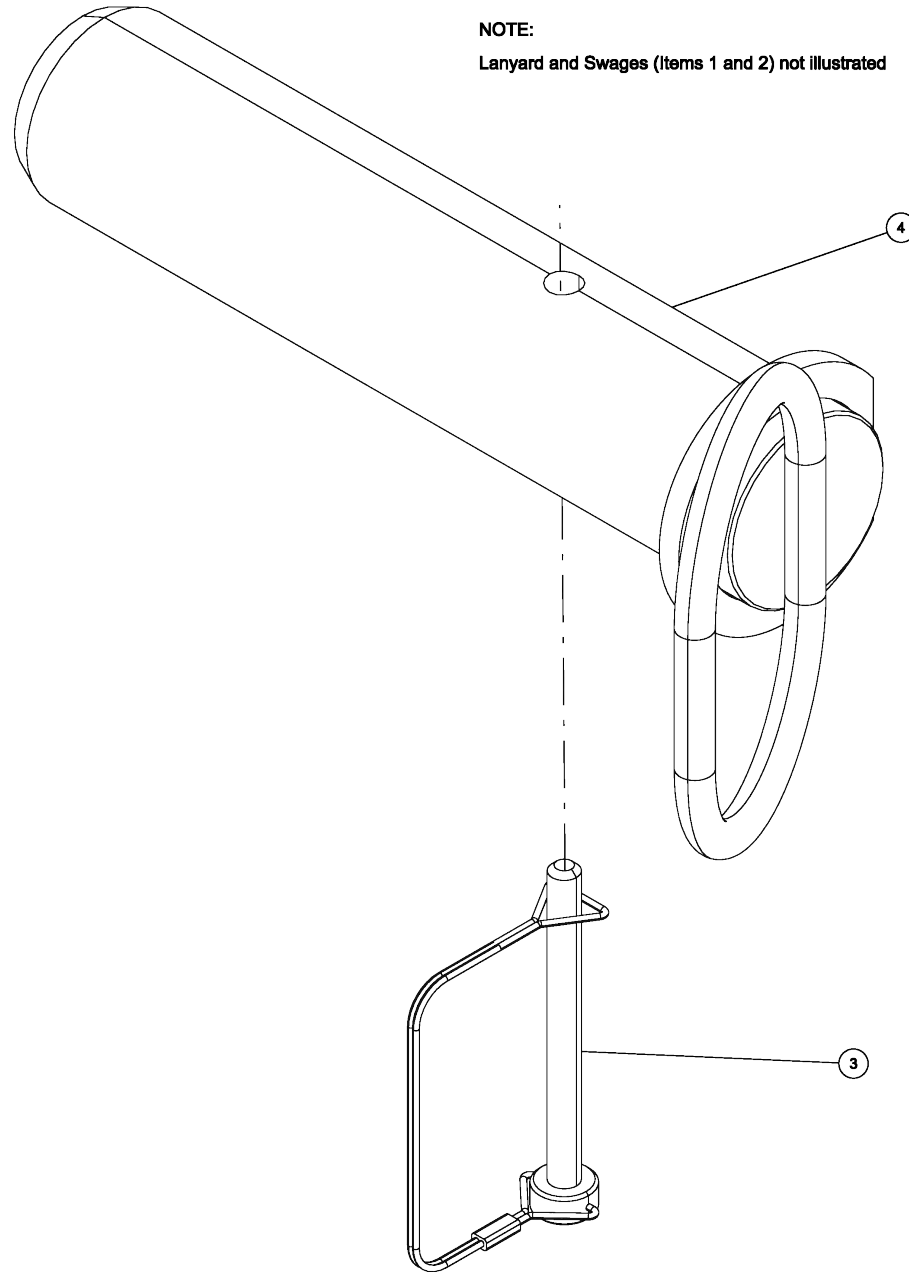
ITEM	PART NUMBER	DESCRIPTION	QTY
--	29389044	CROSSBAR SUBASSEMBLY	
1	26687394	BEARING XBAR SMALL	1
2	26687395	BEARING XBAR LARGE	1
3	29388104	PIVOT CROSSBAR WELDMENT	1

Section I - PARTS

29389052, PIN - CROSSBAR LOCK

NOTE:

Lanyard and Swages (Items 1 and 2) not illustrated



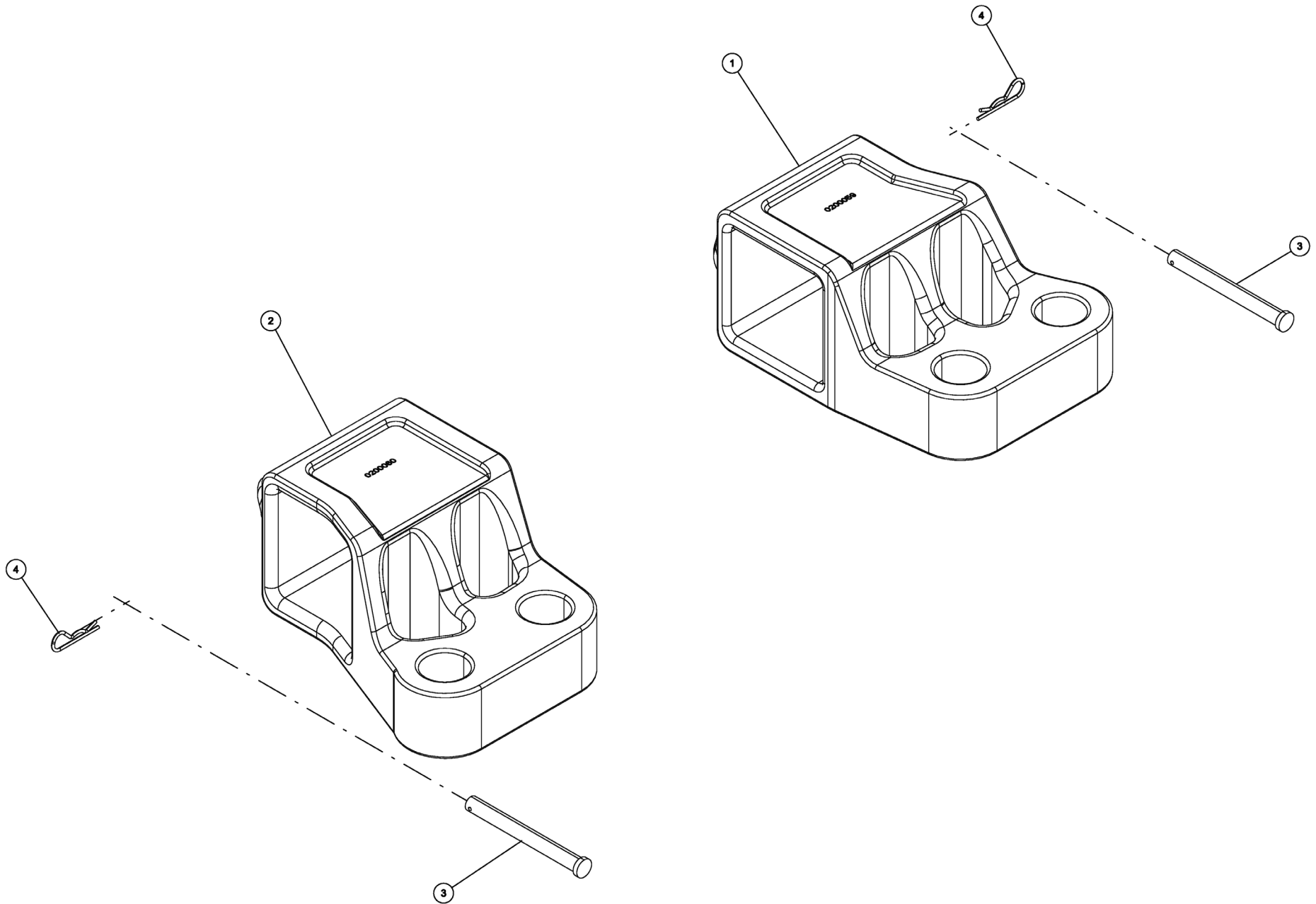
Section I - PARTS

29389052, PIN - CROSSBAR LOCK (cont'd)

ITEM	PART NUMBER	DESCRIPTION	QTY
--	29389052	PIN - CROSSBAR LOCK	
1	0311166	1/8 NYLON COATED CABLE 3/16 OD	1
2	0311167	3/16 SWAGE FOR 1/8 COATED CABL	2
3	26113039	PIN, SAFTY SNAP	1
4	26688055	LOCK PIN WELD'T	1

Section I - PARTS

09020774, KIT, OFFSET FORK ADAPTER ADDON



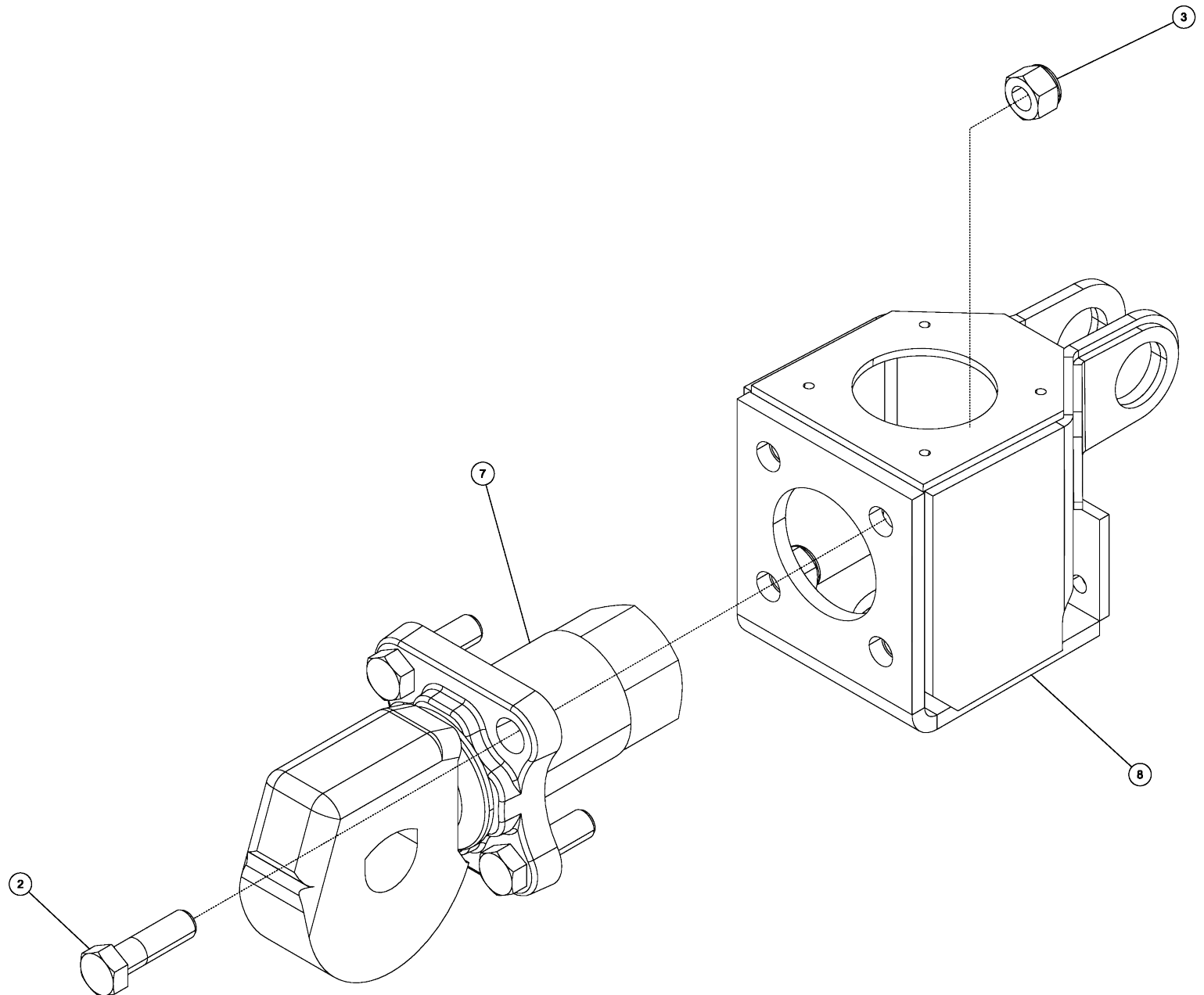
Section I - PARTS

09020774, KIT, OFFSET FORK ADAPTER ADDON (cont'd)

ITEM	PART NUMBER	DESCRIPTION	QTY
--	09020774	KIT, OFFSET FORK ADAPTER ADDON	
1	0200059	CASTING-RH OFFSET FORK ADAPT	1
2	0200060	CASTING-LH OFFSET FORK ADAPT	1
3	0310230	CLEVIS PIN, 5/8 X 6 ZINC PLT	2
4	0400886	PIN, 1/8X2.6 HAI	2

Section I - PARTS

31859030, PINTLE BRACKET KIT



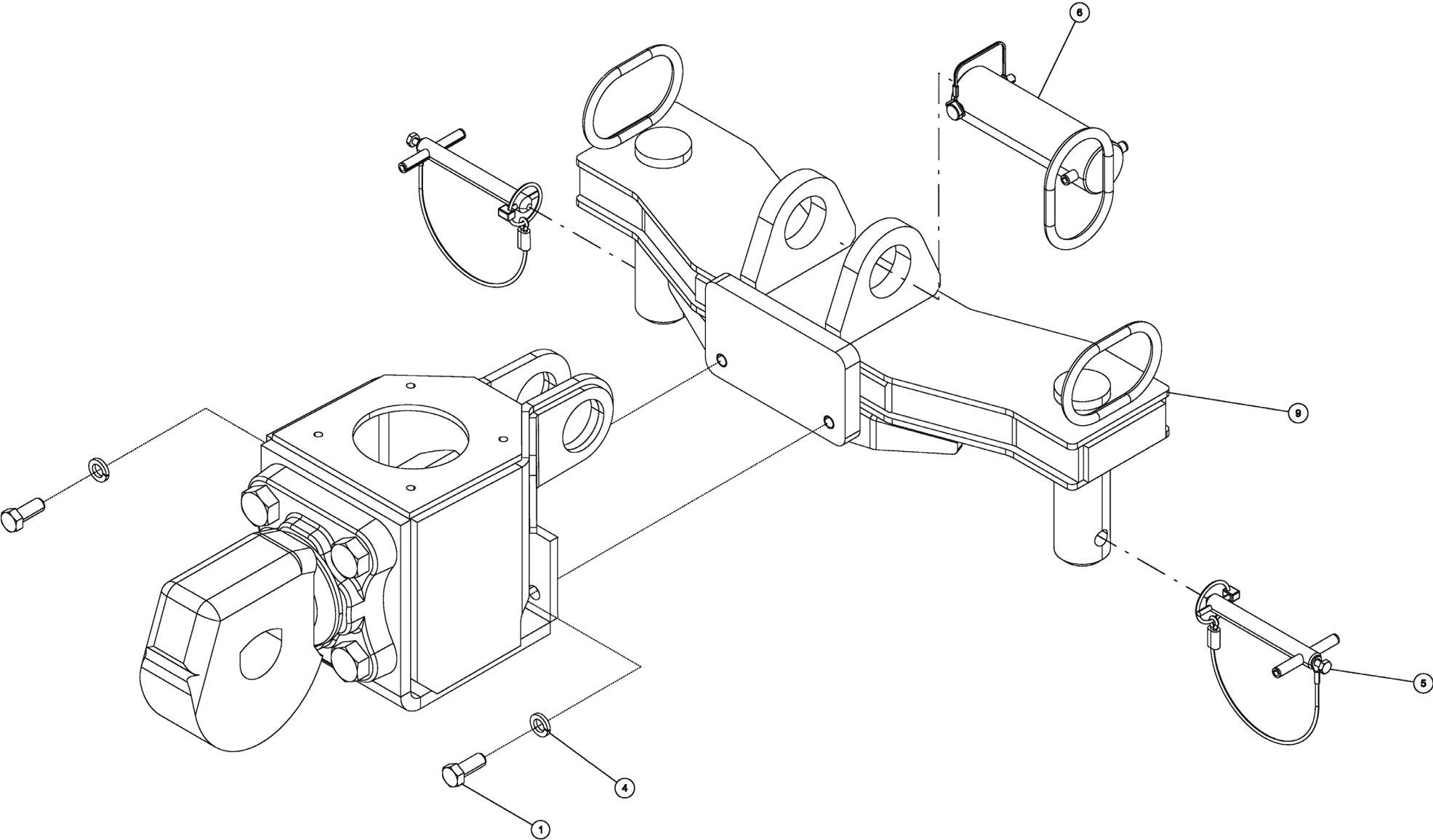
Section I - PARTS

31859030, PINTLE BRACKET KIT (cont'd)

ITEM	PART NUMBER	DESCRIPTION	QTY
--	31859030	PINTLE BRACKET KIT	
1	0400177	SCREW, 1/2-13X1-1/4 HHC GR5	2
2	0400306	SCREW, 7/8-9X3 HHC GR8	4
3	0400437	NUT, 7/8-9 LOK GR8	4
4	0400491	LKWASHER, 1/2	2
5	0902378	PIN-3224 RET. ASSY	2
6	0903294	PIN-MOUNTING ASSY	1
7	22403001	PINTLE HOOK	1
8	22408001	BRACKET, PINTLE HOOK	1
9	31858033	PINTLE BRACKET WELDMENT	1

Section I - PARTS

31859030, PINTLE BRACKET KIT (cont'd)



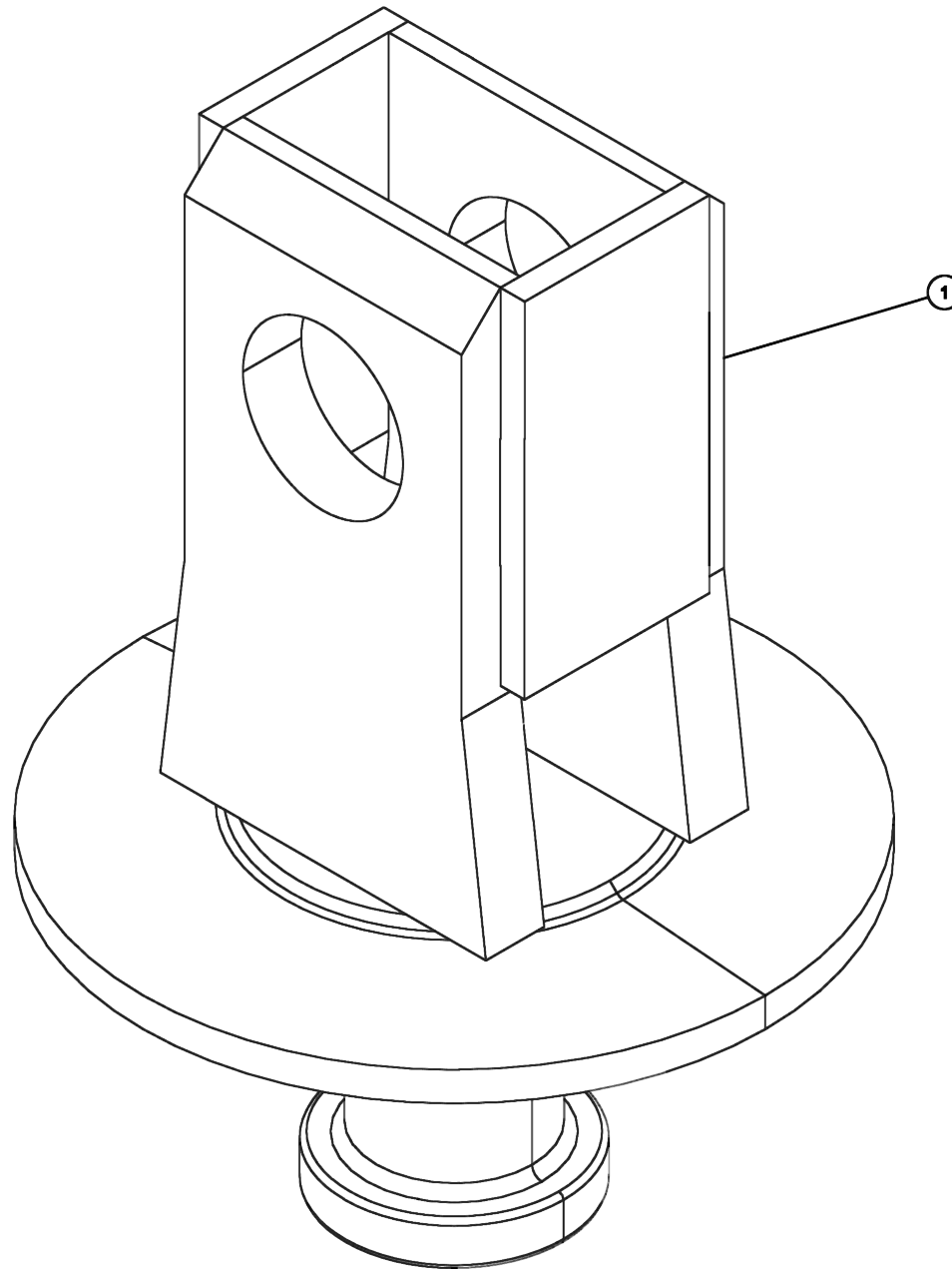
Section I - PARTS

31859030, PINTLE BRACKET KIT (cont'd)

ITEM	PART NUMBER	DESCRIPTION	QTY
--	31859030	PINTLE BRACKET KIT	
1	0400177	SCREW, 1/2-13X1-1/4 HHC GR5	2
2	0400306	SCREW, 7/8-9X3 HHC GR8	4
3	0400437	NUT, 7/8-9 LOK GR8	4
4	0400491	LKWASHER, 1/2	2
5	0902378	PIN-3224 RET. ASSY	2
6	0903294	PIN-MOUNTING ASSY	1
7	22403001	PINTLE HOOK	1
8	22408001	BRACKET, PINTLE HOOK	1
9	31858033	PINTLE BRACKET WELDMENT	1

Section I - PARTS

124001948, KING PIN ATTACHMENT (MALE)



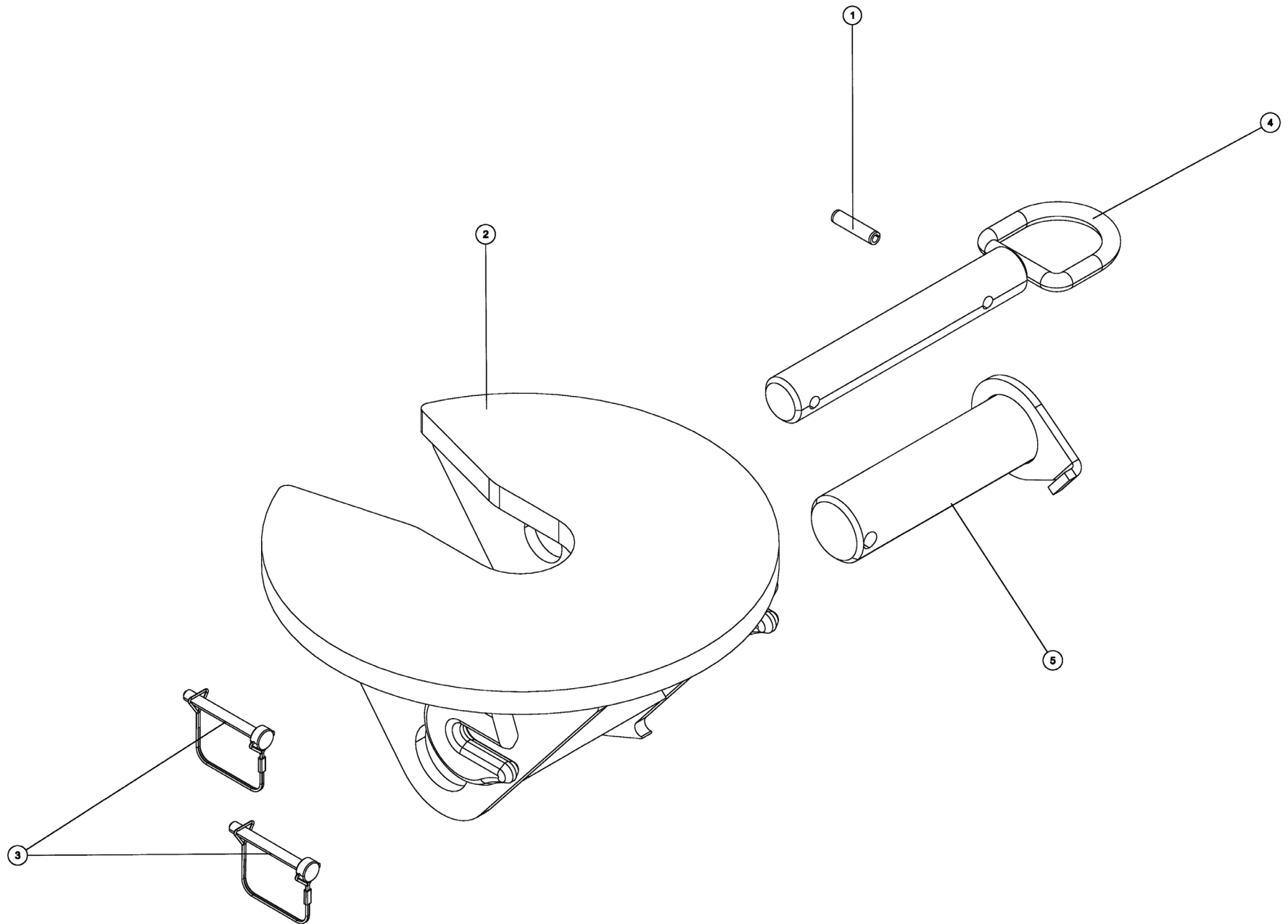
Section I - PARTS

124001948, KING PIN ATTACHMENT (MALE) (cont'd)

ITEM	PART NUMBER	DESCRIPTION	QTY
-- 1	124001948 0803605	KING PIN ATTACHMENT (MALE) ADAPTER-KINGPIN WELDMENT	1

Section I - PARTS

124001833, 5TH WHEEL ADAPTER KIT



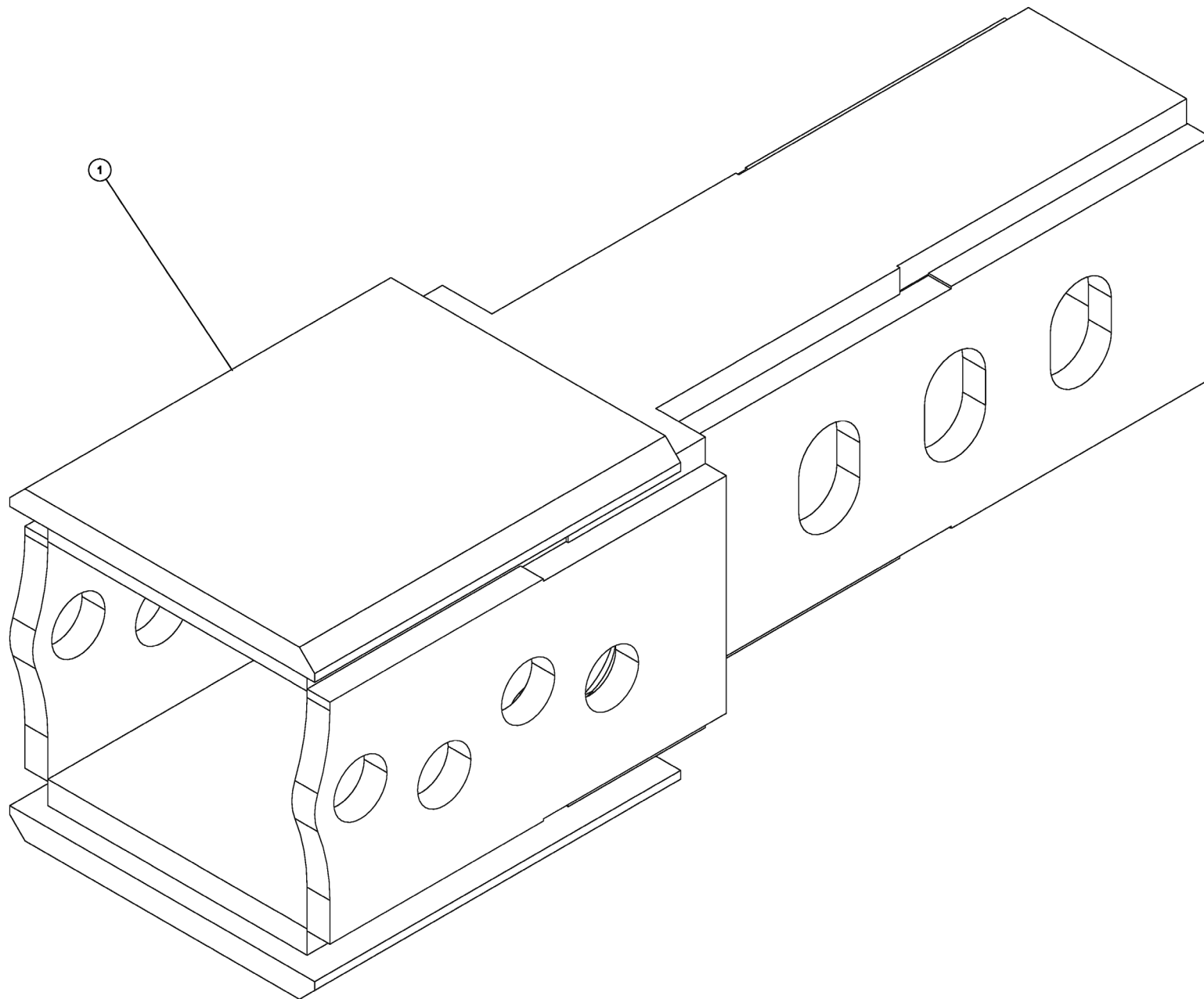
Section I - PARTS

124001833, 5TH WHEEL ADAPTER KIT (cont'd)

ITEM	PART NUMBER	DESCRIPTION	QTY
--	124001833	5TH WHEEL ADAPTER KIT	
--	0902782	ADAPTER-FIFTH WHEEL	
1	0400555	PIN, 3/8X1-1/2 SPR	1
2	0804053	PLATE - FIFTHWHEEL PVT.	1
3	HD1259	SAFETY SNAP PIN	2
4	VA0661	PIN-PULL WELDMENT	1
5	VA0662	PIN-PIVOT WELDMENT	1

Section I - PARTS

30498079, EXTENSION BAR - SMALL (cont'd)



Section I - PARTS

30498079, EXTENSION BAR - SMALL (cont'd)

ITEM	PART NUMBER	DESCRIPTION	QTY
1	30498079	EXTENSION BAR - SMALL	1

NOTES

This image shows a single sheet of white paper with horizontal ruling lines. The lines are evenly spaced and run across the width of the page. There are no margins, text, or other markings on the paper.

NOTES

This image shows a single sheet of white paper with horizontal ruling lines. The lines are evenly spaced and run across the width of the page. There are no margins, text, or other markings on the paper.



Miller Industries Towing Equipment Inc.
8503 Hilltop Drive • Ooltewah, Tennessee 37363
(423) 238-4171 • www.millerind.com