



OWNER'S MANUAL

440Y

CROSSBAR PARTS

**NOTE: MANUAL including SPECIFICATIONS subject to change without notice.
All ratings specified are based on structural factors only, not vehicle capacities or capabilities.**

Miller Industries Towing Equipment Inc.
8503 Hilltop Drive
Ooltewah, Tennessee 37363
Phone (423) 238-4171 • FAX (423) 238-5371

FORM NO. 05004846
JANUARY 2023
Price \$25.00

LIMITED WARRANTY

MILLER INDUSTRIES TOWING EQUIPMENT INC., hereinafter referred to as MILLER, warrants to the original purchaser that each new MILLER wrecker or other MILLER products will be free from defects in material and workmanship for a period of twelve (12) months from date placed in service, but in no event shall such warranty period exceed twenty-four (24) months from date of manufacture by MILLER. The purchaser must promptly notify MILLER in writing of any failure in material or workmanship. In no event shall MILLER accept such notification later than twenty-four (24) months from date of delivery or twelve (12) months from date placed in service, whichever is earlier.

MILLER's obligation under this warranty, statutory or otherwise, is limited to the repair or replacement at the MILLER factory, or at a point designated by MILLER, of such part or parts as shall appear upon inspection by MILLER to be defective in material or workmanship. New or remanufactured parts will be used for any replacement at MILLER's option. This warranty is not transferable. This warranty does not obligate MILLER to bear the cost of labor or transportation charges in connection with the repair or replacement of any parts found to be defective, nor shall it apply to a product upon which repairs or alterations have been made unless authorized by MILLER.

EXCEPT AS EXPRESSLY SET FORTH IN THIS WARRANTY, MILLER MAKES NO OTHER WARRANTY, EXPRESS OR IMPLIED, AND HEREBY DISCLAIMS ALL OTHER WARRANTIES INCLUDING, BUT NOT LIMITED TO, THE IMPLIED WARRANTIES OF MERCHANTABILITY AND FITNESS FOR A PARTICULAR PURPOSE. MILLER shall in no event be liable for claimed downtime, claimed loss of profits or goodwill, or any other special, incidental, indirect, or consequential damages concerning or relating to any product or parts, whether based on negligence, strict liability, breach of contract, breach of warranty, misrepresentation or any other legal theory, regardless of whether the loss resulted from any general or particular requirement which MILLER knew or had reason to know about at the time of sale.

MILLER MAKES NO WARRANTY, EXPRESS OR IMPLIED, AS TO THE FINISHED PRODUCTS MANUFACTURED OR SUPPLIED BY ANOTHER MANUFACTURER AND SUPPLIED BY MILLER TO PURCHASER, including, but not limited to, any vehicle to which a MILLER product may be affixed or any accessories or wire rope, and MILLER EXPRESSLY DISCLAIMS ANY IMPLIED WARRANTIES OF MERCHANTABILITY OR FITNESS FOR A PARTICULAR PURPOSE AS TO SUCH EQUIPMENT OR PRODUCTS. This language shall in no way affect or diminish the rights of the purchaser to rely on such warranties as are extended by such manufacturers or suppliers. MILLER shall, to the extent permitted under applicable law, pass on to the purchaser such manufacturer's or seller's warranty.

MILLER, whose policy is one of continuous improvement, reserves the right to improve its products through changes in design or materials as it may deem desirable without being obligated to incorporate such changes in products previously sold. This warranty is not intended to cover or include the following items, which are set forth by way of example and not limitation:

- A. Normal deterioration of trim, paint, lettering, and appearance items due to wear or exposure to weather, road conditions, road treatments, etc.
- B. Any damage or defect due to accident, misuse, abuse, improper or unauthorized repairs, failure to provide reasonable and necessary maintenance, or uses for which the equipment was not designed or intended.
- C. Alterations or modifications that affect performance, operation or reliability.
- D. Normal maintenance parts including, but not limited to, wear pads, bushings, wire rope, mud flaps, fenderettes, light bulbs, hydraulic oil, filters, and tow sling belts.

IT IS EXPRESSLY UNDERSTOOD THAT MILLER MAKES NO IMPLIED WARRANTY THAT MILLER PRODUCTS SHALL BE FIT FOR THE PURPOSE OF LIFTING OR MOVING PEOPLE OR FOR ANY OTHER IMPROPER USE.



Miller Industries Towing Equipment Inc.
8503 Hilltop Drive
Ooltewah, Tennessee 37363
Telephone (423) 238-4171

SERIAL NUMBER

Section I - PARTS

REF. 05004846

This Section is provided by the manufacturer for the purpose of ordering any component part of your **440Y Recovery Unit** that may be required when part replacement is necessary. Be certain to use only original equipment replacement parts for warranty purposes as well as for keeping your unit in its original state and optimum operating capacities.

When ordering replacement or spare parts be sure to provide the following information to the manufacturer's **Parts Department**.

1. **Manual Number & Date of Publication**
2. **Manual Page Number**
3. **Page Title**
4. **Reference Number of Part Desired**
5. **Part Number**
6. **Part Description**
7. **Quantity of Part Desired**
8. **Unit Serial Number**

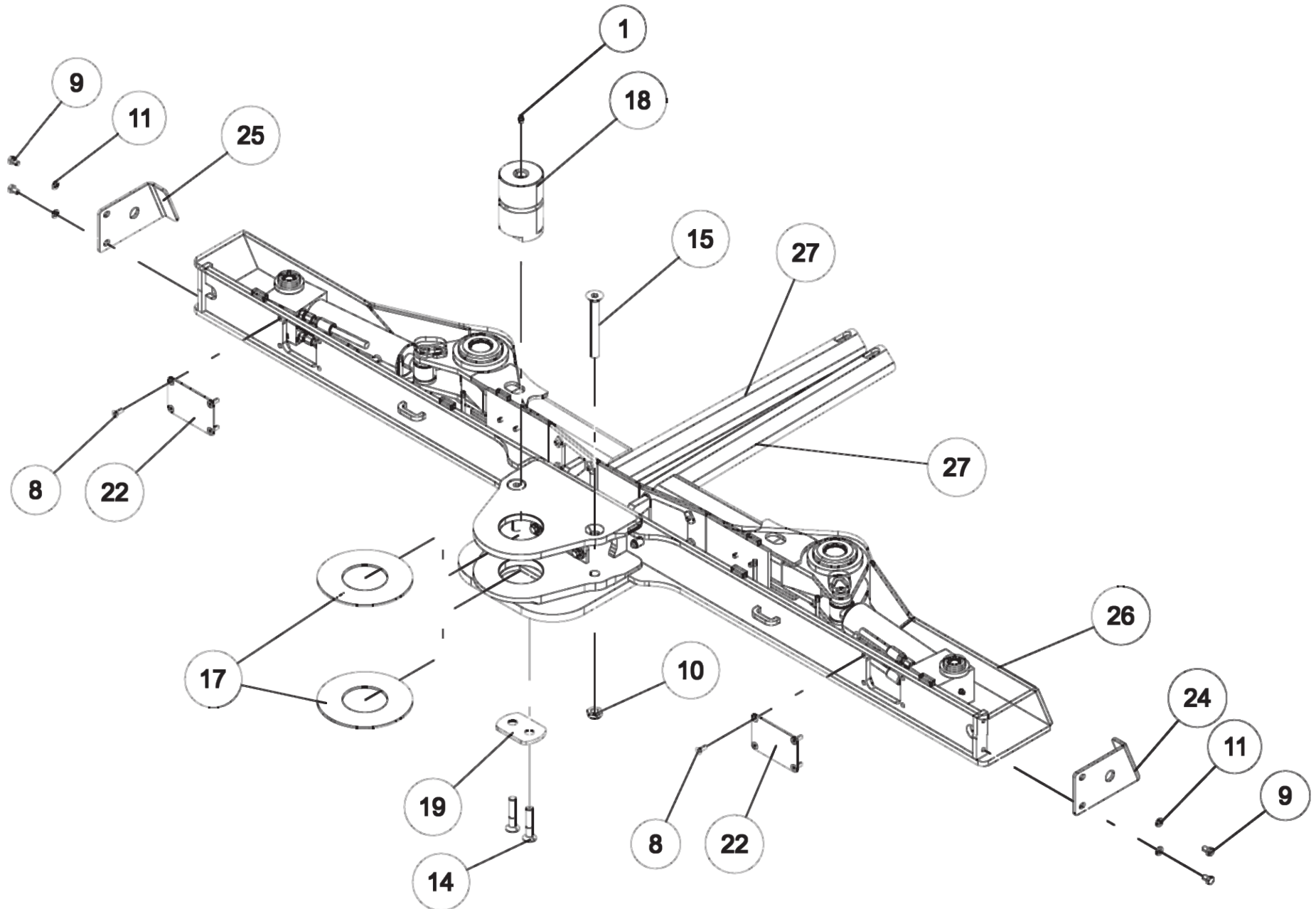
Providing this information will help ensure that the correct parts will be delivered to you in an expedient manner without delay. Should additional information be required for repair or replacement of certain components, contact your Wrecker Manufacturer Authorized Representative.

The Manufacturer reserves the right, without notice or obligation, to improve or modify their products, which may change the specifications, models and feature availability.

Use of other than Factory or Factory Authorized Parts may render the Warranty as null and void.

Section I - PARTS

09008589 ENCLOSED CROSSBAR, NARROW



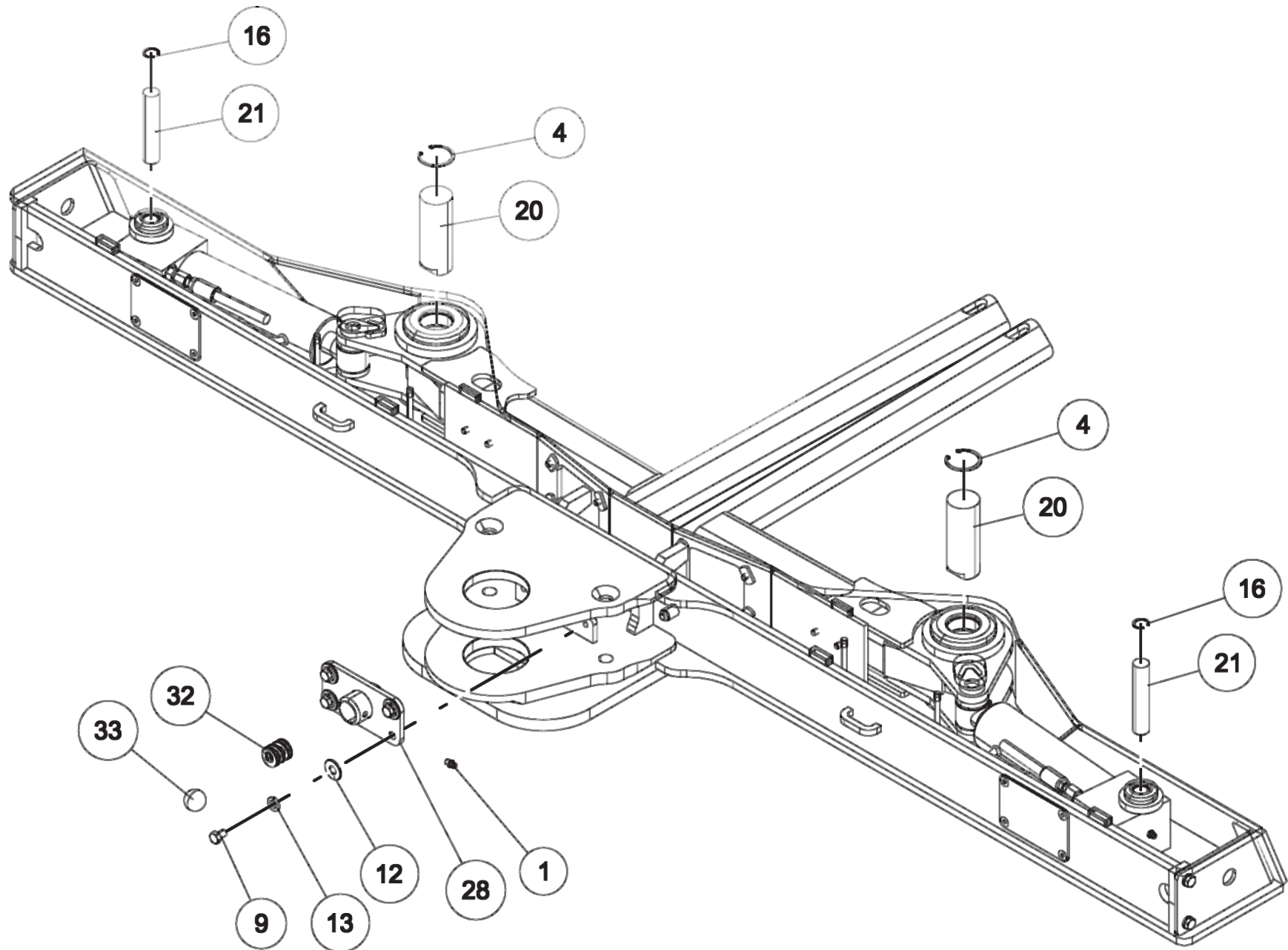
Section I - PARTS

09008589 ENCLOSED CROSSBAR, NARROW (cont'd)

ITEM	PART NUMBER	DESCRIPTION	QTY
	09008589	ENCLOSED CROSSBAR, NARROW	-
1	0300113	GREASE FITTING, 1/4-28 STR	6
2	03011108	HOSE, 24 4FJX-4M3K-MTF-6FJX	2
3	03011109	HOSE, 33.5 4FJX-4M3K-MTF-6FJX	2
4	0301959	SNAP RING-INTERNAL 1-1/2	2
5	0311600	CYL, 812 CLAW GEN3, PUSH STYLE	2
6	0311617	FITTING - 6MJ-BLKHD-TEE	2
7	0311739	STOP PAD CLAW GEN3 CBAR	2
8	0400079	SCREW, 1/4-20X3/4 FHS GR5	20
9	0400233	SCREW, 5/16-18X1/2 HHC GR5	8
10	0400428	NUT, 5/8-11 LOK FLEX JAM	2
11	0400464	LKWASHER, 5/16	4
12	0400480	WASHER, 3/8	4
13	0400482	LKWASHER, 3/8	4
14	0400992	SCREW, 1/2-20X2-1/2 FHS BO	2
15	0401008	SCREW, 5/8-11X5 FHS	2
16	0401150	SNAP RING, 3/4 INT	2
17	0710092	WASHER, THRUST 6500 W/L	2
18	0730174	PIN - C'BAR PIVOT - GEN 3 CBAR	1
19	0730175	PLATE -PIVOT PIN KEEPER -GEN 3	1
20	0730180	PIN - CLAW PIVOT - GEN 3 CBAR	2
21	0730181	PIN - CLAW CYL. - BASE - GEN 3	2
22	0730183	PLATE - ACCESS COVER - GEN 3	4
23	0730218	BUSHING - CLAW PIVOT	4
24	0730258	PLT, END CAP LH	1
25	0730259	PLT, END CAP RH	1
26	08007728	CROSSBAR, ENCLOSED NARROW	1
27	08007730	CLAW, NARROW ENCLOSED XBAR	2
28	0811047	DETENT BRK'T WELD'T - GEN 3	1
29	0811061	PIN WLMT, CLAW/CYL GEN3	2
30	9047057	DIE SPRING- MHP-42(DANLY	1
31	9052013	1" BALL CHROME	1
32	HC1291	FITTING, 4MJ-4MB STR THR	4
33	HD0160	SNAP RING, 3/4EXTERNAL	2

Section I - PARTS

09008589 ENCLOSED CROSSBAR, NARROW



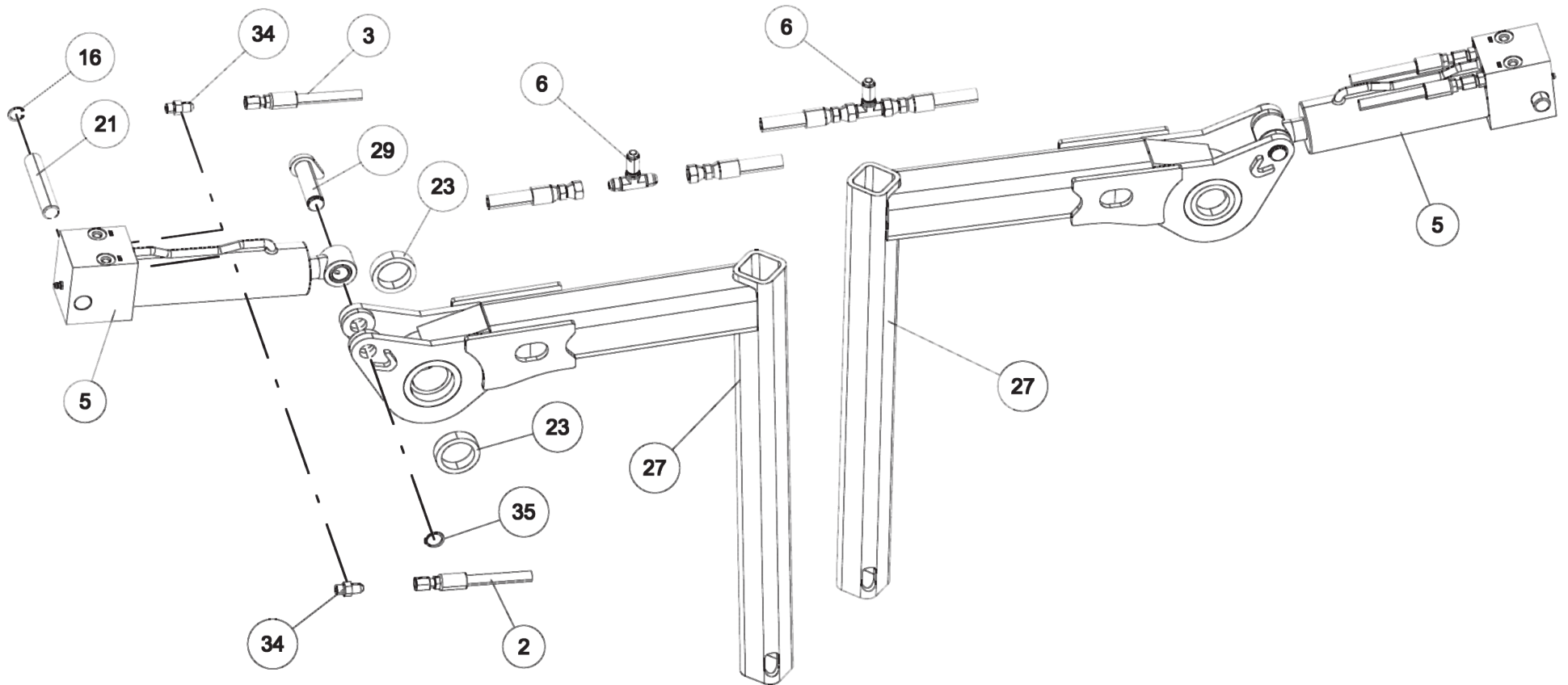
Section I - PARTS

09008589 ENCLOSED CROSSBAR, NARROW (cont'd)

ITEM	PART NUMBER	DESCRIPTION	QTY
	09008589	ENCLOSED CROSSBAR, NARROW	-
1	0300113	GREASE FITTING, 1/4-28 STR	6
2	03011108	HOSE, 24 4FJX-4M3K-MTF-6FJX	2
3	03011109	HOSE, 33.5 4FJX-4M3K-MTF-6FJX	2
4	0301959	SNAP RING-INTERNAL 1-1/2	2
5	0311600	CYL, 812 CLAW GEN3, PUSH STYLE	2
6	0311617	FITTING - 6MJ-BLKHD-TEE	2
7	0311739	STOP PAD CLAW GEN3 CBAR	2
8	0400079	SCREW, 1/4-20X3/4 FHS GR5	20
9	0400233	SCREW, 5/16-18X1/2 HHC GR5	8
10	0400428	NUT, 5/8-11 LOK FLEX JAM	2
11	0400464	LKWASHER, 5/16	4
12	0400480	WASHER, 3/8	4
13	0400482	LKWASHER, 3/8	4
14	0400992	SCREW, 1/2-20X2-1/2 FHS BO	2
15	0401008	SCREW, 5/8-11X5 FHS	2
16	0401150	SNAP RING, 3/4 INT	2
17	0710092	WASHER, THRUST 6500 W/L	2
18	0730174	PIN - C'BAR PIVOT - GEN 3 CBAR	1
19	0730175	PLATE -PIVOT PIN KEEPER -GEN 3	1
20	0730180	PIN - CLAW PIVOT - GEN 3 CBAR	2
21	0730181	PIN - CLAW CYL. - BASE - GEN 3	2
22	0730183	PLATE - ACCESS COVER - GEN 3	4
23	0730218	BUSHING - CLAW PIVOT	4
24	0730258	PLT, END CAP LH	1
25	0730259	PLT, END CAP RH	1
26	08007728	CROSSBAR, ENCLOSED NARROW	1
27	08007730	CLAW, NARROW ENCLOSED XBAR	2
28	0811047	DETENT BRK'T WELD'T - GEN 3	1
29	0811061	PIN WLMT, CLAW/CYL GEN3	2
30	9047057	DIE SPRING- MHP-42(DANLY	1
31	9052013	1" BALL CHROME	1
32	HC1291	FITTING, 4MJ-4MB STR THR	4
33	HD0160	SNAP RING, 3/4EXTERNAL	2

Section I - PARTS

09008589 ENCLOSED CROSSBAR, NARROW



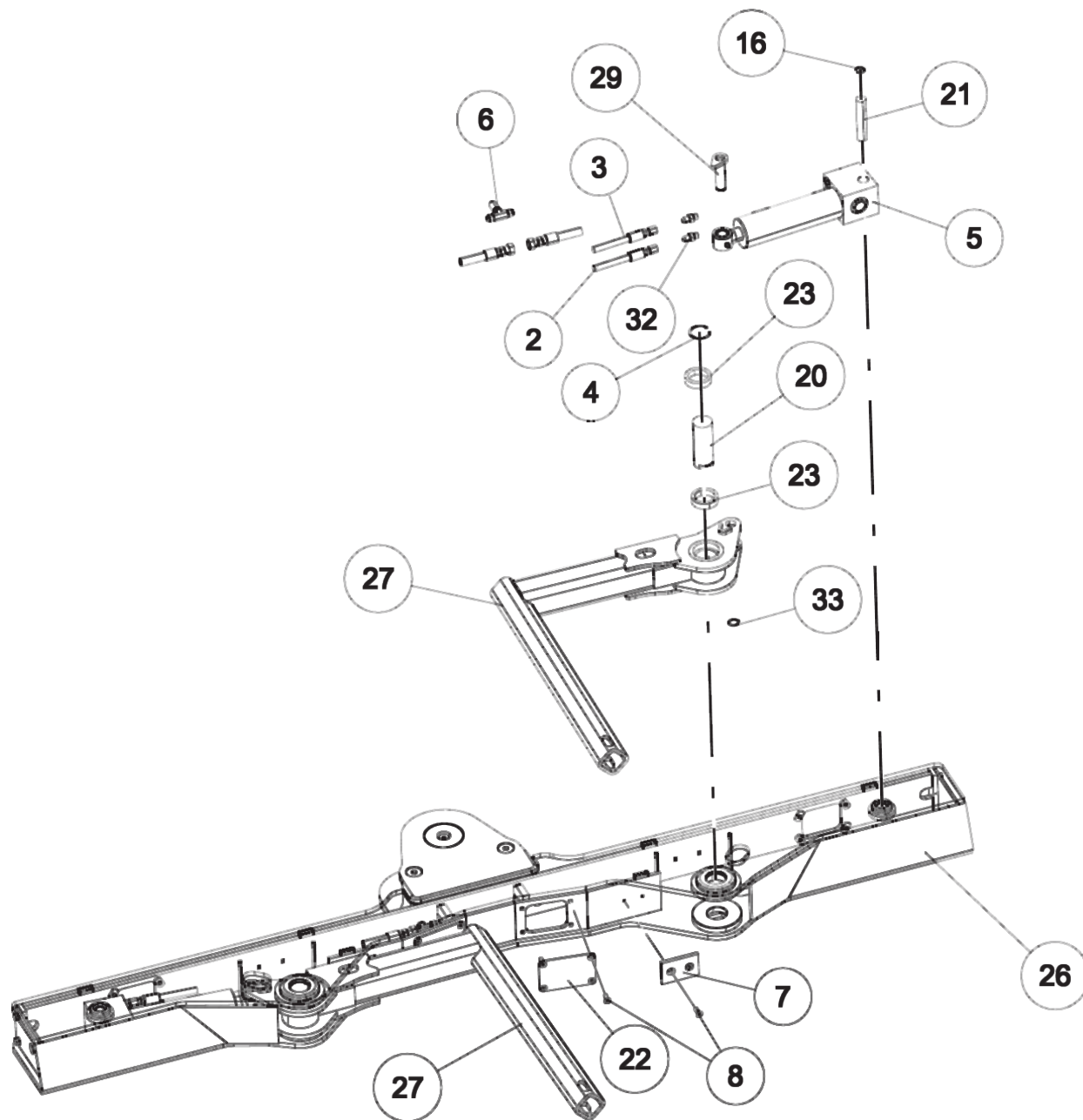
Section I - PARTS

09008589 ENCLOSED CROSSBAR, NARROW (cont'd)

ITEM	PART NUMBER	DESCRIPTION	QTY
	09008589	ENCLOSED CROSSBAR, NARROW	-
1	0300113	GREASE FITTING, 1/4-28 STR	6
2	03011108	HOSE, 24 4FJX-4M3K-MTF-6FJX	2
3	03011109	HOSE, 33.5 4FJX-4M3K-MTF-6FJX	2
4	0301959	SNAP RING-INTERNAL 1-1/2	2
5	0311600	CYL, 812 CLAW GEN3, PUSH STYLE	2
6	0311617	FITTING - 6MJ-BLKHD-TEE	2
7	0311739	STOP PAD CLAW GEN3 CBAR	2
8	0400079	SCREW, 1/4-20X3/4 FHS GR5	20
9	0400233	SCREW, 5/16-18X1/2 HHC GR5	8
10	0400428	NUT, 5/8-11 LOK FLEX JAM	2
11	0400464	LKWASHER, 5/16	4
12	0400480	WASHER, 3/8	4
13	0400482	LKWASHER, 3/8	4
14	0400992	SCREW, 1/2-20X2-1/2 FHS BO	2
15	0401008	SCREW, 5/8-11X5 FHS	2
16	0401150	SNAP RING, 3/4 INT	2
17	0710092	WASHER, THRUST 6500 W/L	2
18	0730174	PIN - C'BAR PIVOT - GEN 3 CBAR	1
19	0730175	PLATE -PIVOT PIN KEEPER -GEN 3	1
20	0730180	PIN - CLAW PIVOT - GEN 3 CBAR	2
21	0730181	PIN - CLAW CYL. - BASE - GEN 3	2
22	0730183	PLATE - ACCESS COVER - GEN 3	4
23	0730218	BUSHING - CLAW PIVOT	4
24	0730258	PLT, END CAP LH	1
25	0730259	PLT, END CAP RH	1
26	08007728	CROSSBAR, ENCLOSED NARROW	1
27	08007730	CLAW, NARROW ENCLOSED XBAR	2
28	0811047	DETENT BRK'T WELD'T - GEN 3	1
29	0811061	PIN WLMT, CLAW/CYL GEN3	2
30	9047057	DIE SPRING- MHP-42(DANLY	1
31	9052013	1" BALL CHROME	1
32	HC1291	FITTING, 4MJ-4MB STR THR	4
33	HD0160	SNAP RING, 3/4EXTERNAL	2

Section I - PARTS

09008589 ENCLOSED CROSSBAR, NARROW



Section I - PARTS

09008589 ENCLOSED CROSSBAR, NARROW (cont'd)

ITEM	PART NUMBER	DESCRIPTION	QTY
	09008589	ENCLOSED CROSSBAR, NARROW	-
1	0300113	GREASE FITTING, 1/4-28 STR	6
2	03011108	HOSE, 24 4FJX-4M3K-MTF-6FJX	2
3	03011109	HOSE, 33.5 4FJX-4M3K-MTF-6FJX	2
4	0301959	SNAP RING-INTERNAL 1-1/2	2
5	0311600	CYL, 812 CLAW GEN3, PUSH STYLE	2
6	0311617	FITTING - 6MJ-BLKHD-TEE	2
7	0311739	STOP PAD CLAW GEN3 CBAR	2
8	0400079	SCREW, 1/4-20X3/4 FHS GR5	20
9	0400233	SCREW, 5/16-18X1/2 HHC GR5	8
10	0400428	NUT, 5/8-11 LOK FLEX JAM	2
11	0400464	LKWASHER, 5/16	4
12	0400480	WASHER, 3/8	4
13	0400482	LKWASHER, 3/8	4
14	0400992	SCREW, 1/2-20X2-1/2 FHS BO	2
15	0401008	SCREW, 5/8-11X5 FHS	2
16	0401150	SNAP RING, 3/4 INT	2
17	0710092	WASHER, THRUST 6500 W/L	2
18	0730174	PIN - C'BAR PIVOT - GEN 3 CBAR	1
19	0730175	PLATE -PIVOT PIN KEEPER -GEN 3	1
20	0730180	PIN - CLAW PIVOT - GEN 3 CBAR	2
21	0730181	PIN - CLAW CYL. - BASE - GEN 3	2
22	0730183	PLATE - ACCESS COVER - GEN 3	4
23	0730218	BUSHING - CLAW PIVOT	4
24	0730258	PLT, END CAP LH	1
25	0730259	PLT, END CAP RH	1
26	08007728	CROSSBAR, ENCLOSED NARROW	1
27	08007730	CLAW, NARROW ENCLOSED XBAR	2
28	0811047	DETENT BRK'T WELD'T - GEN 3	1
29	0811061	PIN WLMT, CLAW/CYL GEN3	2
30	9047057	DIE SPRING- MHP-42(DANLY	1
31	9052013	1" BALL CHROME	1
32	HC1291	FITTING, 4MJ-4MB STR THR	4
33	HD0160	SNAP RING, 3/4EXTERNAL	2

NOTES

This image shows a single sheet of white paper with horizontal ruling lines. The lines are evenly spaced and run across the width of the page. There are no margins, text, or other markings on the paper.

NOTES

This image shows a single sheet of white paper with horizontal ruling lines. The lines are evenly spaced and run across the width of the page. There are no margins, text, or other markings on the paper.



Miller Industries Towing Equipment Inc.
8503 Hilltop Drive • Ooltewah, Tennessee 37363
(423) 238-4171 • www.millerind.com