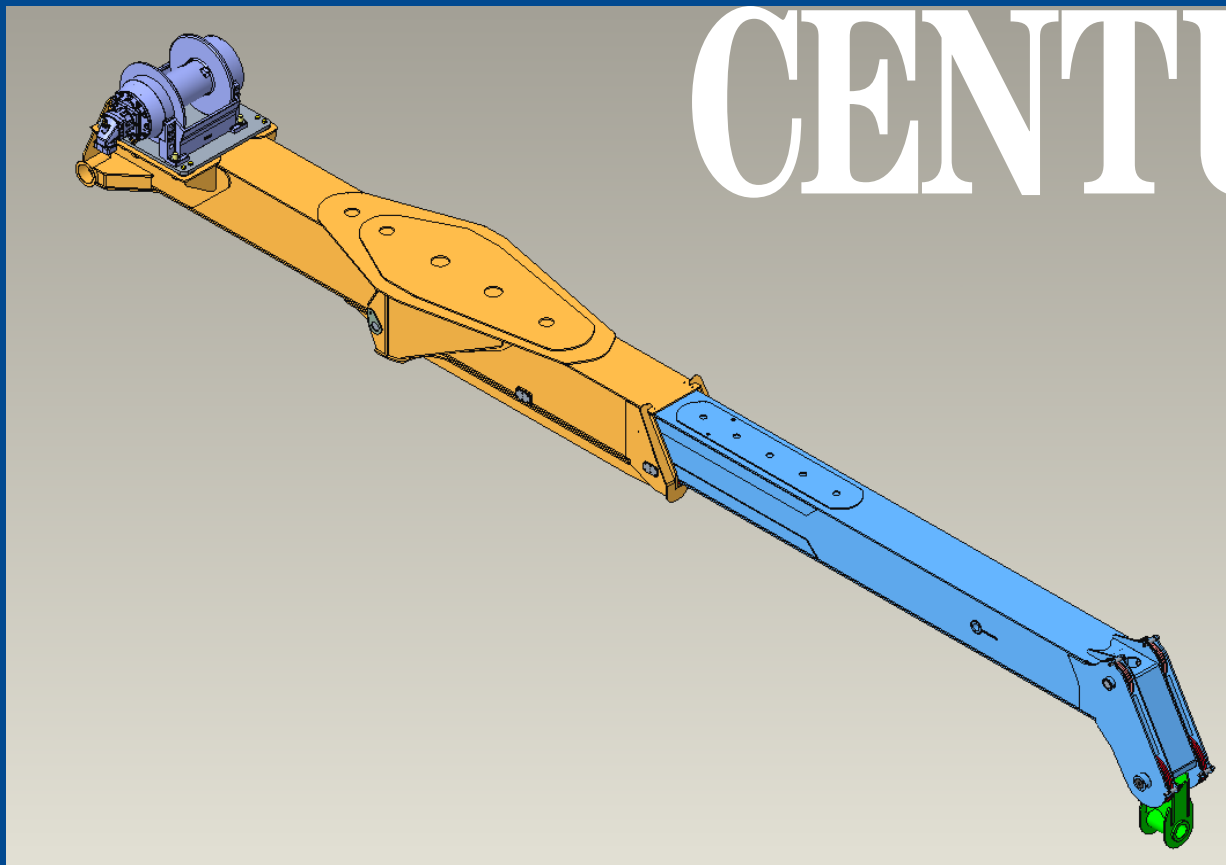


# CENTURY®



## OWNER'S MANUAL

# 450RR BOOM ASSEMBLY PARTS

**NOTE: MANUAL including SPECIFICATIONS subject to change without notice.  
All ratings specified are based on structural factors only, not vehicle capacities or capabilities.**

Miller Industries Towing Equipment Inc.  
8503 Hilltop Drive  
Ooltewah, Tennessee 37363  
Phone (423) 238-4171 • FAX (423) 238-5371

FORM NO. 05004666  
SEPTEMBER 2022  
Price \$25.00

## LIMITED WARRANTY

MILLER INDUSTRIES TOWING EQUIPMENT INC., hereinafter referred to as MILLER, warrants to the original purchaser that each new MILLER wrecker or other MILLER products will be free from defects in material and workmanship for a period of twelve (12) months from date placed in service, but in no event shall such warranty period exceed twenty-four (24) months from date of manufacture by MILLER. The purchaser must promptly notify MILLER in writing of any failure in material or workmanship. In no event shall MILLER accept such notification later than twenty-four (24) months from date of delivery or twelve (12) months from date placed in service, whichever is earlier.

MILLER's obligation under this warranty, statutory or otherwise, is limited to the repair or replacement at the MILLER factory, or at a point designated by MILLER, of such part or parts as shall appear upon inspection by MILLER to be defective in material or workmanship. New or remanufactured parts will be used for any replacement at MILLER's option. This warranty is not transferable. This warranty does not obligate MILLER to bear the cost of labor or transportation charges in connection with the repair or replacement of any parts found to be defective, nor shall it apply to a product upon which repairs or alterations have been made unless authorized by MILLER.

EXCEPT AS EXPRESSLY SET FORTH IN THIS WARRANTY, MILLER MAKES NO OTHER WARRANTY, EXPRESS OR IMPLIED, AND HEREBY DISCLAIMS ALL OTHER WARRANTIES INCLUDING, BUT NOT LIMITED TO, THE IMPLIED WARRANTIES OF MERCHANTABILITY AND FITNESS FOR A PARTICULAR PURPOSE. MILLER shall in no event be liable for claimed downtime, claimed loss of profits or goodwill, or any other special, incidental, indirect, or consequential damages concerning or relating to any product or parts, whether based on negligence, strict liability, breach of contract, breach of warranty, misrepresentation or any other legal theory, regardless of whether the loss resulted from any general or particular requirement which MILLER knew or had reason to know about at the time of sale.

MILLER MAKES NO WARRANTY, EXPRESS OR IMPLIED, AS TO THE FINISHED PRODUCTS MANUFACTURED OR SUPPLIED BY ANOTHER MANUFACTURER AND SUPPLIED BY MILLER TO PURCHASER, including, but not limited to, any vehicle to which a MILLER product may be affixed or any accessories or wire rope, and MILLER EXPRESSLY DISCLAIMS ANY IMPLIED WARRANTIES OF MERCHANTABILITY OR FITNESS FOR A PARTICULAR PURPOSE AS TO SUCH EQUIPMENT OR PRODUCTS. This language shall in no way affect or diminish the rights of the purchaser to rely on such warranties as are extended by such manufacturers or suppliers. MILLER shall, to the extent permitted under applicable law, pass on to the purchaser such manufacturer's or seller's warranty.

MILLER, whose policy is one of continuous improvement, reserves the right to improve its products through changes in design or materials as it may deem desirable without being obligated to incorporate such changes in products previously sold. This warranty is not intended to cover or include the following items, which are set forth by way of example and not limitation:

- A. Normal deterioration of trim, paint, lettering, and appearance items due to wear or exposure to weather, road conditions, road treatments, etc.
- B. Any damage or defect due to accident, misuse, abuse, improper or unauthorized repairs, failure to provide reasonable and necessary maintenance, or uses for which the equipment was not designed or intended.
- C. Alterations or modifications that affect performance, operation or reliability.
- D. Normal maintenance parts including, but not limited to, wear pads, bushings, wire rope, mud flaps, fenderettes, light bulbs, hydraulic oil, filters, and tow sling belts.

IT IS EXPRESSLY UNDERSTOOD THAT MILLER MAKES NO IMPLIED WARRANTY THAT MILLER PRODUCTS SHALL BE FIT FOR THE PURPOSE OF LIFTING OR MOVING PEOPLE OR FOR ANY OTHER IMPROPER USE.



Miller Industries Towing Equipment Inc.  
8503 Hilltop Drive  
Ooltewah, Tennessee 37363  
Telephone (423) 238-4171

SERIAL NUMBER

<p><b>OWNER, USER AND OPERATOR:</b></p>
---

We appreciate your choice of our towing and recovery unit for your application. Our number one priority is user safety which is best achieved by our joint efforts. We feel that you can make a major contribution to safety if you, as the equipment owner and operator:

1. Comply with Federal, State, and Local Regulations.
2. Read, Understand, and Follow the Instructions in this Manual.
3. Use Good, Safe Work Practices in a Common Sense Way.
4. Only have Authorized and Trained Personnel performing maintenance on the Towing and Recovery Unit.

Use of other than Factory or Factory Authorized Parts will render the Warranty as null and void.

**TABLE OF CONTENTS**

It is assumed by the manufacturer that the Owner/Operator has a thorough knowledge of the accepted and lawful retrieval and towing methods as dictated by his city, county or state. The manufacturer rejects any liability claim that may result from the incorrect or unlawful application of its equipment.

**Section I - PARTS**

31209000 Boom Assembly, 450RR ..... I-2 thru I-7

31209004 Hydraulic Assembly, 450RR ..... I-8 thru I-9

## Section I - PARTS

REF. 05004666

This Section is provided by the manufacturer for the purpose of ordering any component part of the **450RR Boom Assembly** that may be required when part replacement is necessary. Be certain to use only original equipment replacement parts for warranty purposes as well as for keeping your unit in its original state and optimum operating capacities.

When ordering replacement or spare parts be sure to provide the following information to the manufacturer's **Parts Department**.

1. **Manual Number & Date of Publication**
2. **Manual Page Number**
3. **Page Title**
4. **Reference Number of Part Desired**
5. **Part Number**
6. **Part Description**
7. **Quantity of Part Desired**
8. **Unit Serial Number**

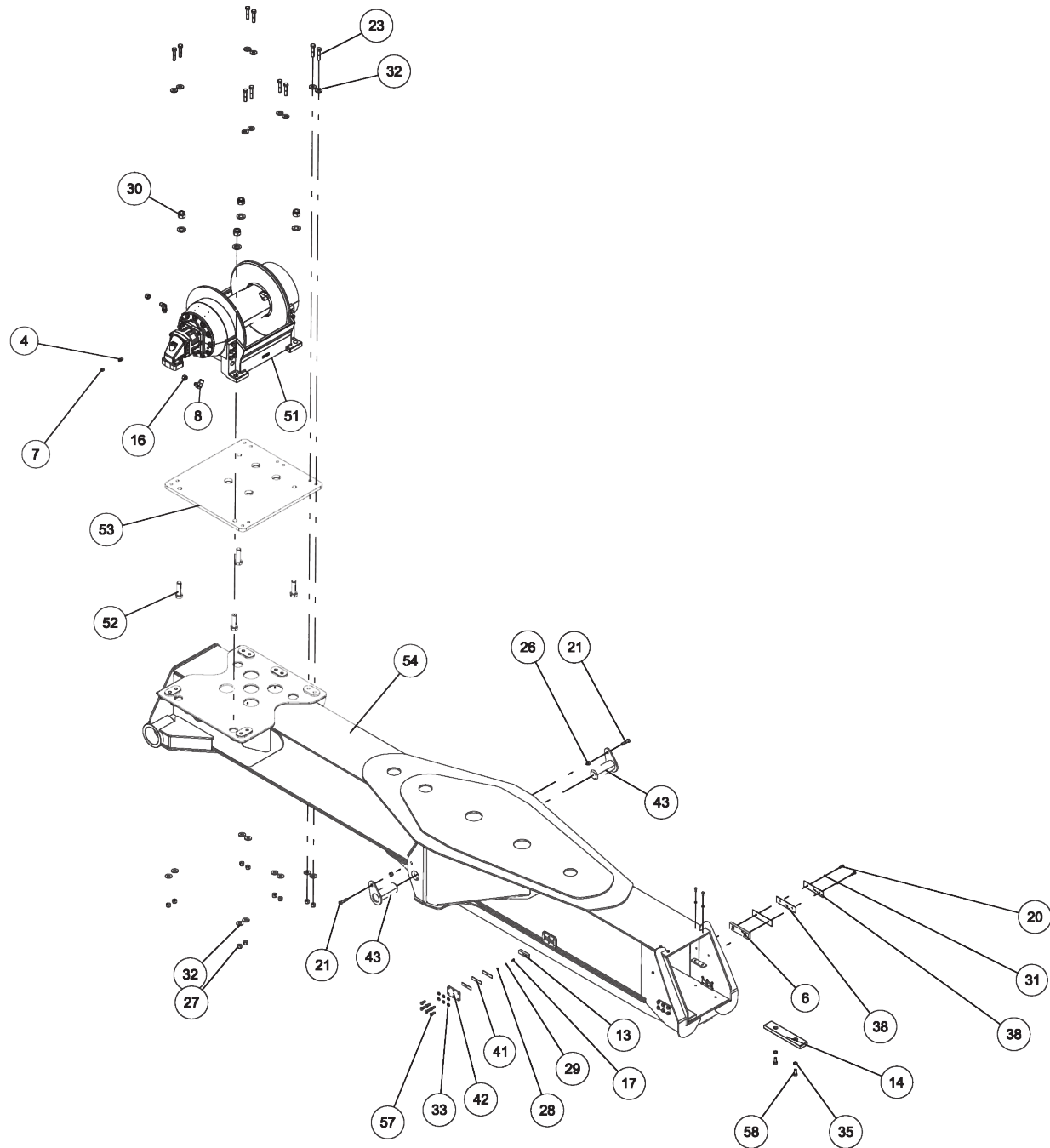
Providing this information will help ensure that the correct parts will be delivered to you in an expedient manner without delay. Should additional information be required for repair or replacement of certain components, contact your Wrecker Manufacturer Authorized Representative.

The Manufacturer reserves the right, without notice or obligation, to improve or modify their products, which may change the specifications, models and feature availability.

**Use of other than Factory or Factory Authorized Parts could render the Warranty as null and void.**

## Section I - PARTS

### 31209000 BOOM ASSEMBLY, 450RR



## Section I - PARTS

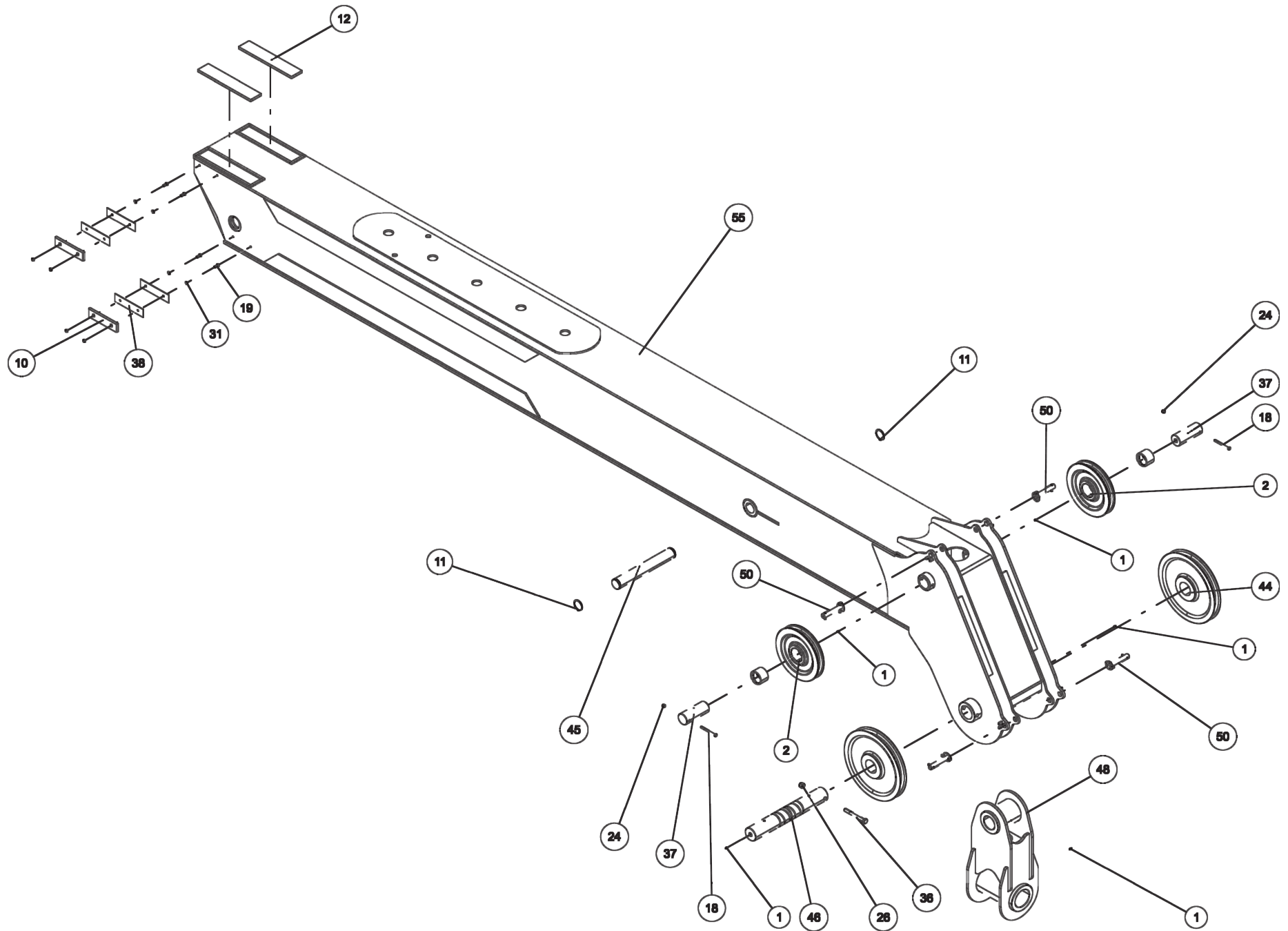
### 31209000 BOOM ASSEMBLY, 450RR (cont'd)

ITEM	PART NUMBER	DESCRIPTION	QTY
--	31209000	BOOM ASSEMBLY, 450RR	
1	0300113	GREASE FITTING, 1/4-28 STR	12
2	0300311	SHEAVE, 12-10-1BB 10	2
3	0301397	GREASE FITTING, 1/4-28 90	1
4	0301425	FITTING, CONNECTOR	1
5	0301545	FITTING, ELB 12MJ-12MB 90	1
6	0301924	SLIDE PAD-BOOM-SIDE	2
7	0302065	FITTING, 6-FJ CAP	1
8	0302660	FITTING 12MJ-16MP 90	1
9	0303520	FITTING, ELL 90 DEG	2
10	0303892	SLIDE PAD-BOOM-SIDE	4
11	0305023	SNAP RING 5100-0225PP	4
12	0305031	INNER BOOM SLIDE PAD	2
13	0306825	SLIDE PAD - 3/4 x 1 x 4	4
14	0307234	PAD - SLIDE	2
15	0310710	CYL-HYD 8.5BOREX132 STRK W/BLD	1
16	0312613	FITTING - 12FJ-CAP	2
17	0400066	SCREW, 1/4-20X3/4 HHC GR5	4
18	0400140	SCREW, 3/8-16X4 HHC GR5	2
19	0400141	SCREW, 3/8-16X7/8 HHC GR5	12
20	0400148	SCREW, 3/8-16X1-1/4 HHC GR5	4
21	0400262	SCREW, 5/8-11X2-1/2 HHC GR8	2
22	0400264	SCREW, 5/8-11X2-1/4 HHC GR5	4
23	0400287	SCREW, 3/4-10X3-1/2 HHC GR8	10
24	0400392	NUT, 3/8-16 LOK	2
25	0400421	NUT, 5/8-11 LOK	4
26	0400426	NUT, 5/8-11 LOK GR8	3
27	0400430	NUT, 3/4-10 LOK	10
28	0400451	WASHER, 1/4	4
29	0400452	LKWASHER, 1/4	4

ITEM	PART NUMBER	DESCRIPTION	QTY
30	0400460	NUT, 1-1/4-7 LOK GR8	4
31	0400482	LKWASHER, 3/8	16
32	0400490	WASHER, 3/4 GR8	20
33	0400491	LKWASHER, 1/2	24
34	0400501	WASHER, 1-1/4 SAE PL	4
35	0400508	LKWASHER, 5/8	4
36	0400637	SCREW, 5/8-11X5-1/2 HHC GR8	1
37	0700563	SHAFT, SHEAVE	2
38	0703734	SHIM,SIDE PLATE,OUT.BOOM	14
39	0703740	SHAFT, EXTEND CYL	1
40	0717260	SPACER - TOP	2
41	0717262	SHIM - SLIDE PAD	12
42	0718466	PLATE - SLIDE PAD SUPPORT	4
43	0806922	LIFT CYL PIVOT ROD END WLDT	2
44	27433005	sheave 16"	2
45	27437055	PIN EXTEND CYLINDER	1
46	27437057	PIN SHEAVE	12
47	27437063	PLATE	1
48	27438005	BLOCK PIVOT WELDMENT	1
49	27438006	EXTEND CYLINDER BRACKET WLMT	1
50	27439005	CABLE KEEPER PIN ASSEMBLY	4
51	31203006	WINCH (M25-10-129-3)	1
52	31204001	HHCS 1-1/4-7NC X 4-1/4 GR8	4
53	31207034	PLATE, WINCH MTG	1
54	31208002	OUTER BOOM WLMT	1
55	31208004	INNER BOOM WLMT	1
56	31209004	HYD ASSY 450RR	1
57	9012567	5/8 JIC CAP	2
58	9041402	1/2 NC X 1 1/4 HHCS PLT GR8	24

## Section I - PARTS

### 31209000 BOOM ASSEMBLY, 450RR (cont'd)





## Section I - PARTS

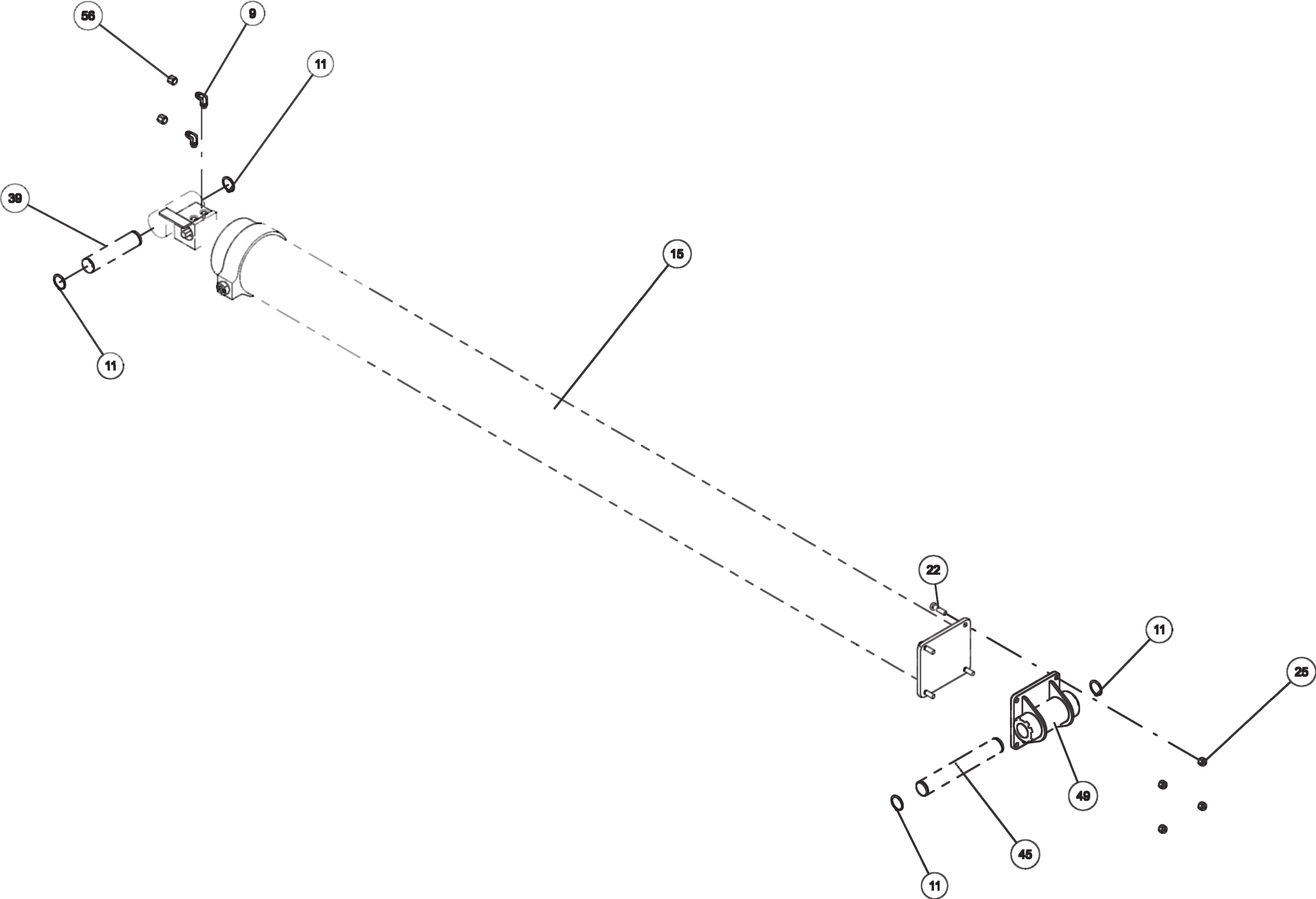
### 31209000 BOOM ASSEMBLY, 450RR (cont'd)

ITEM	PART NUMBER	DESCRIPTION	QTY
--	31209000	BOOM ASSEMBLY, 450RR	
1	0300113	GREASE FITTING, 1/4-28 STR	12
2	0300311	SHEAVE, 12-10-1BB 10	2
3	0301397	GREASE FITTING, 1/4-28 90	1
4	0301425	FITTING, CONNECTOR	1
5	0301545	FITTING, ELB 12MJ-12MB 90	1
6	0301924	SLIDE PAD-BOOM-SIDE	2
7	0302065	FITTING, 6-FJ CAP	1
8	0302660	FITTING 12MJ-16MP 90	1
9	0303520	FITTING, ELL 90 DEG	2
10	0303892	SLIDE PAD-BOOM-SIDE	4
11	0305023	SNAP RING 5100-0225PP	4
12	0305031	INNER BOOM SLIDE PAD	2
13	0306825	SLIDE PAD - 3/4 x 1 x 4	4
14	0307234	PAD - SLIDE	2
15	0310710	CYL-HYD 8.5BOREX132 STRK W/BLD	1
16	0312613	FITTING - 12FJ-CAP	2
17	0400066	SCREW, 1/4-20X3/4 HHC GR5	4
18	0400140	SCREW, 3/8-16X4 HHC GR5	2
19	0400141	SCREW, 3/8-16X7/8 HHC GR5	12
20	0400148	SCREW, 3/8-16X1-1/4 HHC GR5	4
21	0400262	SCREW, 5/8-11X2-1/2 HHC GR8	2
22	0400264	SCREW, 5/8-11X2-1/4 HHC GR5	4
23	0400287	SCREW, 3/4-10X3-1/2 HHC GR8	10
24	0400392	NUT, 3/8-16 LOK	2
25	0400421	NUT, 5/8-11 LOK	4
26	0400426	NUT, 5/8-11 LOK GR8	3
27	0400430	NUT, 3/4-10 LOK	10
28	0400451	WASHER, 1/4	4
29	0400452	LKWASHER, 1/4	4

ITEM	PART NUMBER	DESCRIPTION	QTY
30	0400460	NUT, 1-1/4-7 LOK GR8	4
31	0400482	LKWASHER, 3/8	16
32	0400490	WASHER, 3/4 GR8	20
33	0400491	LKWASHER, 1/2	24
34	0400501	WASHER, 1-1/4 SAE PL	4
35	0400508	LKWASHER, 5/8	4
36	0400637	SCREW, 5/8-11X5-1/2 HHC GR8	1
37	0700563	SHAFT, SHEAVE	2
38	0703734	SHIM,SIDE PLATE,OUT.BOOM	14
39	0703740	SHAFT, EXTEND CYL	1
40	0717260	SPACER - TOP	2
41	0717262	SHIM - SLIDE PAD	12
42	0718466	PLATE - SLIDE PAD SUPPORT	4
43	0806922	LIFT CYL PIVOT ROD END WLDT	2
44	27433005	sheave 16"	2
45	27437055	PIN EXTEND CYLINDER	1
46	27437057	PIN SHEAVE	12
47	27437063	PLATE	1
48	27438005	BLOCK PIVOT WELDMENT	1
49	27438006	EXTEND CYLINDER BRACKET WLMT	1
50	27439005	CABLE KEEPER PIN ASSEMBLY	4
51	31203006	WINCH (M25-10-129-3)	1
52	31204001	HHCS 1-1/4-7NC X 4-1/4 GR8	4
53	31207034	PLATE, WINCH MTG	1
54	31208002	OUTER BOOM WLMT	1
55	31208004	INNER BOOM WLMT	1
56	31209004	HYD ASSY 450RR	1
57	9012567	5/8 JIC CAP	2
58	9041402	1/2 NC X 1 1/4 HHCS PLT GR8	24

Section I - PARTS

31209000 BOOM ASSEMBLY, 450RR (cont'd)



## Section I - PARTS

### 31209000 BOOM ASSEMBLY, 450RR (cont'd)

ITEM	PART NUMBER	DESCRIPTION	QTY
--	31209000	BOOM ASSEMBLY, 450RR	
1	0300113	GREASE FITTING, 1/4-28 STR	12
2	0300311	SHEAVE, 12-10-1BB 10	2
3	0301397	GREASE FITTING, 1/4-28 90	1
4	0301425	FITTING, CONNECTOR	1
5	0301545	FITTING, ELB 12MJ-12MB 90	1
6	0301924	SLIDE PAD-BOOM-SIDE	2
7	0302065	FITTING, 6-FJ CAP	1
8	0302660	FITTING 12MJ-16MP 90	1
9	0303520	FITTING, ELL 90 DEG	2
10	0303892	SLIDE PAD-BOOM-SIDE	4
11	0305023	SNAP RING 5100-0225PP	4
12	0305031	INNER BOOM SLIDE PAD	2
13	0306825	SLIDE PAD - 3/4 x 1 x 4	4
14	0307234	PAD - SLIDE	2
15	0310710	CYL-HYD 8.5BOREX132 STRK W/BLD	1
16	0312613	FITTING - 12FJ-CAP	2
17	0400066	SCREW, 1/4-20X3/4 HHC GR5	4
18	0400140	SCREW, 3/8-16X4 HHC GR5	2
19	0400141	SCREW, 3/8-16X7/8 HHC GR5	12
20	0400148	SCREW, 3/8-16X1-1/4 HHC GR5	4
21	0400262	SCREW, 5/8-11X2-1/2 HHC GR8	2
22	0400264	SCREW, 5/8-11X2-1/4 HHC GR5	4
23	0400287	SCREW, 3/4-10X3-1/2 HHC GR8	10
24	0400392	NUT, 3/8-16 LOK	2
25	0400421	NUT, 5/8-11 LOK	4
26	0400426	NUT, 5/8-11 LOK GR8	3
27	0400430	NUT, 3/4-10 LOK	10
28	0400451	WASHER, 1/4	4
29	0400452	LKWASHER, 1/4	4

ITEM	PART NUMBER	DESCRIPTION	QTY
30	0400460	NUT, 1-1/4-7 LOK GR8	4
31	0400482	LKWASHER, 3/8	16
32	0400490	WASHER, 3/4 GR8	20
33	0400491	LKWASHER, 1/2	24
34	0400501	WASHER, 1-1/4 SAE PL	4
35	0400508	LKWASHER, 5/8	4
36	0400637	SCREW, 5/8-11X5-1/2 HHC GR8	1
37	0700563	SHAFT, SHEAVE	2
38	0703734	SHIM,SIDE PLATE,OUT.BOOM	14
39	0703740	SHAFT, EXTEND CYL	1
40	0717260	SPACER - TOP	2
41	0717262	SHIM - SLIDE PAD	12
42	0718466	PLATE - SLIDE PAD SUPPORT	4
43	0806922	LIFT CYL PIVOT ROD END WLDT	2
44	27433005	sheave 16"	2
45	27437055	PIN EXTEND CYLINDER	1
46	27437057	PIN SHEAVE	12
47	27437063	PLATE	1
48	27438005	BLOCK PIVOT WELDMENT	1
49	27438006	EXTEND CYLINDER BRACKET WLMT	1
50	27439005	CABLE KEEPER PIN ASSEMBLY	4
51	31203006	WINCH (M25-10-129-3)	1
52	31204001	HHCS 1-1/4-7NC X 4-1/4 GR8	4
53	31207034	PLATE, WINCH MTG	1
54	31208002	OUTER BOOM WLMT	1
55	31208004	INNER BOOM WLMT	1
56	31209004	HYD ASSY 450RR	1
57	9012567	5/8 JIC CAP	2
58	9041402	1/2 NC X 1 1/4 HHCS PLT GR8	24

**Section I - PARTS**

**31209004 HYDRAULIC ASSEMBLY, 450RR**

***This page intentionally left blank***

## Section I - PARTS

### 31209004 HYDRAULIC ASSEMBLY, 450RR (cont'd)

ITEM	PART NUMBER	DESCRIPTION	QTY
--	31209004	HYD ASSEMBLY, 450RR	
1	25783079	FITTING-8MBSPPOR-8MJ	3
2	27433010	HOSE ASSY-LIFT CYL	4
3	27433011	HOSE ASSY-BOOM EXTEND	2
4	27433012	HOSE ASSY-WINCH	1
5	27433015	FITTING 12MFFOR-8MB	4
6	27433016	FLANGE ADAPTER BLOCK	2
7	27433017	HOSE ASSY-WINCH	1
8	27433020	FITTING 12MJ-20MB	2
9	27433021	O-RING 20FLOR	2
10	31203002	ELBOW, 16MJ-20FLH90	2
11	31203003	FLANGE KIT 20FHHS	2

## NOTES

This image shows a single sheet of white paper with horizontal ruling lines. The lines are evenly spaced and run across the width of the page. There are no margins, text, or other markings on the paper.



**CENTURY®**

Miller Industries Towing Equipment Inc.

8503 Hilltop Drive • Ooltewah, Tennessee 37363  
(423) 238-4171 • [www.millerind.com](http://www.millerind.com)