



TITAN C SERIES™

Roll-Off System



Optional loading dock feature allows the operator to raise the deck up to 8" for convenient dock loading.



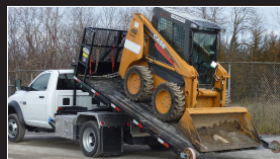
The receiver-style or extendable (14' & 16' only) hitch package allows you to tow a variety of equipment such as generators, pumps, and compressors.



Low beavertail of the deck allows you to easily load the smallest of lifts with minimal clearance. Driving units onto the deck makes it easier to maximize your load.



With the deck on the ground the operator can secure his load easily, quickly and safely.



With 60 sec. deck deployment and the ability to drive equipment on and off, most companies report time savings of 30% - 40% over conventional carriers.



Ideal for hauling a variety of equipment that can be easily loaded with a fork-lift. Quick-detachable deck system allows you to have multiple decks at one location.

Standard Equipment

Hydraulic Chassis Frame Mounted Lifting System

- 2 Hydraulic Lift Cylinders
- Integrated Rear Body Locks
- Manual Driver Side Control Valve
- Fenders
- Mud Flaps
- Rear bumper
- Hydraulic Tank with Easy Service Filter
- Hydraulic pump
- 7 Way Tow Light Plug
- Back up Alarm
- Painted Black
- Assembled and Tested

Deck

- Steel Checker Plate Deck w/Full Cab Protector and Quick Attach System
- Outside Rub Rails with Stake Pockets
- Tapered Rear Approach Plate
- Front Chain Racks
- Removable Rear Wheels
- Painted Black



Optional Equipment

- Hydraulic Dock Leveler System
- Stationary Light Pylon
- 8,000 lb. Electric Slide in Winch Package
- Tall Removable Sides (30" x 43.75")
- Short Removable Side (60" x 28.75")
- Extendable Hitch (14' and 16' only)
- Pintle/Ball Attachment
- Hot Shift PTO
- Rear Work Lights
- Flashing LED Warning Light
- Tie-Down Chains
- Load Binders
- Switch Panel
- Aluminum Tool Boxes (33" or 49")
- Steel Tool Box with Stainless Steel Door (36" or 48")
- Rear Jumper Start Kit
- Additional Decks
- Installation

Deck Specifications & Chassis Recommendation

Deck Length	Capacity	G.V.W.	C.A.
12'	8,000 lbs.	17,800 - 19,500 lbs.	84"
14'	12,000 lbs.	25,000 - 26,000 lbs.	108"
16'	12,000 lbs.	25,000 - 33,000 lbs.	120"

All ratings are based on structural factors only, not vehicle capacities or capabilities. Specifications shown are approximations and may vary depending on chassis selected. Miller Industries Towing Equipment Inc. reserves the right to change or modify product and or specifications without notice or obligation. Some equipment shown is optional.

*All Recommendations are minimums. Heavier specifications may be required depending on chassis and equipment weight.

TITAN C SERIES™

Miller
INDUSTRIES

8503 Hilltop Drive • Ooltewah, TN 37363

800-292-0330 • millerInd.com