



Miller Large Wrecker

Options & Features

Walk-Around 2012

Electrical and Lighting Options

2012 MMO System



- Wireless remote-no change (8-function shown)

- Three Solid-State mVECS for wiring junctions, located in drivers side forward toolbox or on the turret for a Rotator. Also new R260 remote receiver in same location, no external antenna



- Two multi-function backlit touch-screen displays (1 in the cab, 1 at the rear controls)

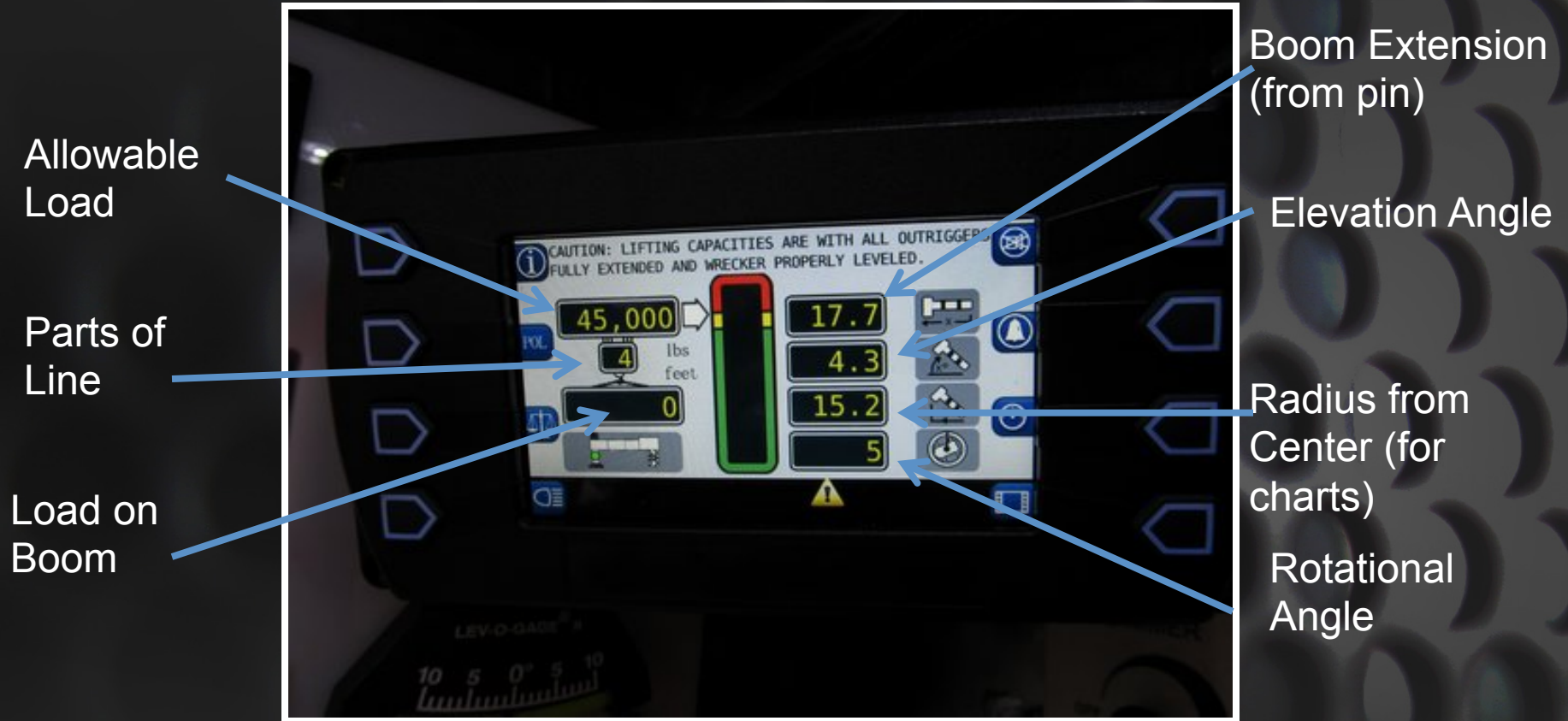


2012 Touchscreen Displays



2 touch screens are standard with either an MMO or MMGO system.

2012 MMGO System (Rotator Only)



2 touch screens are standard with an MMO and MMGO system. But only the rear display shows load information with the optional MMGO system.

Century Availability

Description	3212	4024/5130/5230	7035/9055	7035XP/ 9055XP	1060 Stick	1130/1140/1060S/ 1075S
8 fxn wireless remote only	x	124004404	x	x	124004404	124004404
8 fxn remote and MMO power dist	x	124004537	x	x	124004537	124004510
14 fxn wireless remote only	124004431	124004408	124004408	x	x	x
14 fxn remote and MMO power dist	x	124004511	124004511	x	X	x
XP MMO Power dist. and remotes	x	x	x	124004512	X	x
XP Omit Power Dist (incl remotes)	x	x	x	124004410	X	x
8 fxn remote and MMGO power dist	X	X	X	X	X	124004509

Red=Standard

Optional Switch Panel

174013109



Air PTO Override

124002680 (Sgl-Acting) 4024-9055, XP, 1130, 1140

124002681 (Dbl-Acting) 1060S/1075S Rotator



Allows for manual PTO engagement if there is an electrical failure.

The box to the left shows the yellow knob for the pusher axle air pressure adjustment.



Flasher Control Box

124004140 - All Models



Video

Five wire hookup-Requires LED lights-10A maximum

Flashes all marker lights on the wrecker body

Strip Lamp Kits



Strip Lamp Kit Part Numbers

Fits all '02 and newer aluminum toolboxes

124004215	180" CB Rotator (All Outriggers)
124004217	3212 CX 138CA
124004411	3212 CX 120CA
124004218	Standard 3212
124004219	138" CA
124004220	206" CA/180" CB
124004225	156" CA
124004226	182" CA/156" CB
124004227	230" CA/204" CB
124004221	24" Tunnel
124004222	30" Tunnel
124004223	36" Tunnel
124004224	48" Tunnel
124004244	40" Above Rails Box (Tandem Steer)

Hella Round LED Underlift Lamps

124004448 (pair) All Models - includes bracket



Hella Double-Bulb Rectangular Halogen Work Lamps

124002723 (pair) All Models



Hella Xenon Rotator Boom Lamps

124002724 (pair)



Hella Single-Bulb Oval Halogen Work Lamps

124002725 (pair) All Models



Swivel Lamps

124002263 (pair) - All Models



Docking Lights

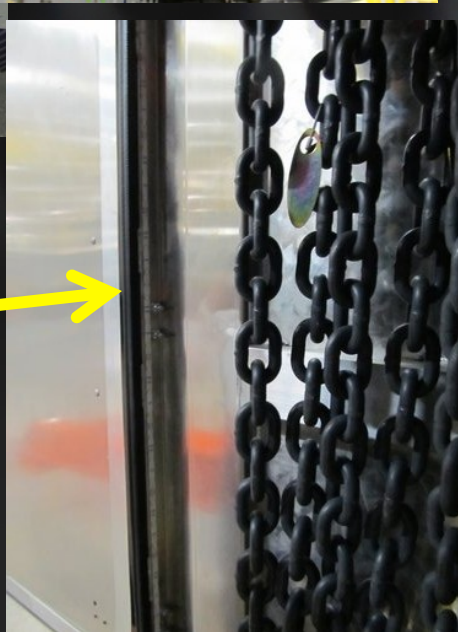
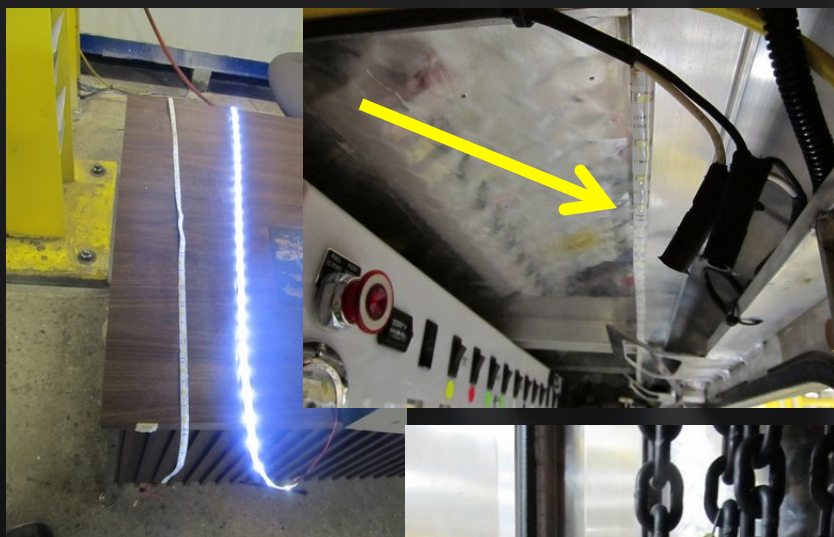
124002717 (pair)



3 pair shown

White LED Toolbox Strip Lamps

Now standard on all units V30/3112 and larger



Retrofit kits for older units are available.

Whelen LED Micro-Edge Pod

124002708 (pair)



For Rotator top-beam front outrigger, use 124002812-includes bracket

Whelen 72" 16 Head LED Lightbar

124002710 - 4 Corner Amber, Halogen Work Lights, Brake-Turn-Tail



Whelen 60" 8 Head LED Lightbar

174001984 - 4 Corner Amber, Halogen Work Lights, Brake-Turn-Tail



Whelen 60" 4 Head LED Lightbar

174002711 - 4 Corner Amber, Halogen Work Lights, Brake-Turn-Tail



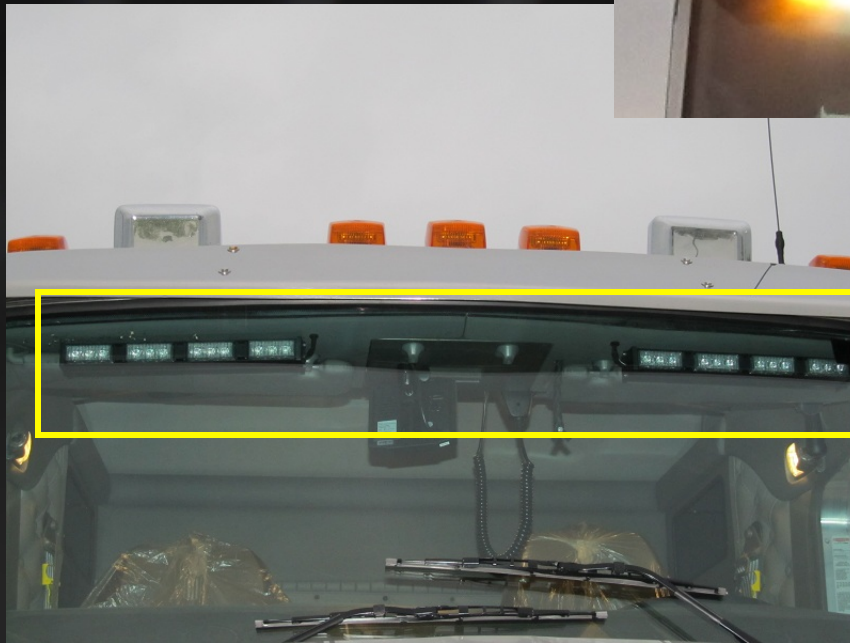
Whelen M6 Clear Lens Amber LED with Chrome Bezel

124004444 (pairs)



Whelen Dominator Lamp Kit

124004449 (pair)



Flex Lamp Kit

124004452 (pair)



Pylons

Optional 33" Aluminum Tubular Pylon for 3212

124002677



Optional 42" Aluminum Tubular Pylon for 3212-CX2

124004117



Optional 38" Aluminum Tubular Pylon

124003003

Shown with 2 pairs 124004444 (M6)

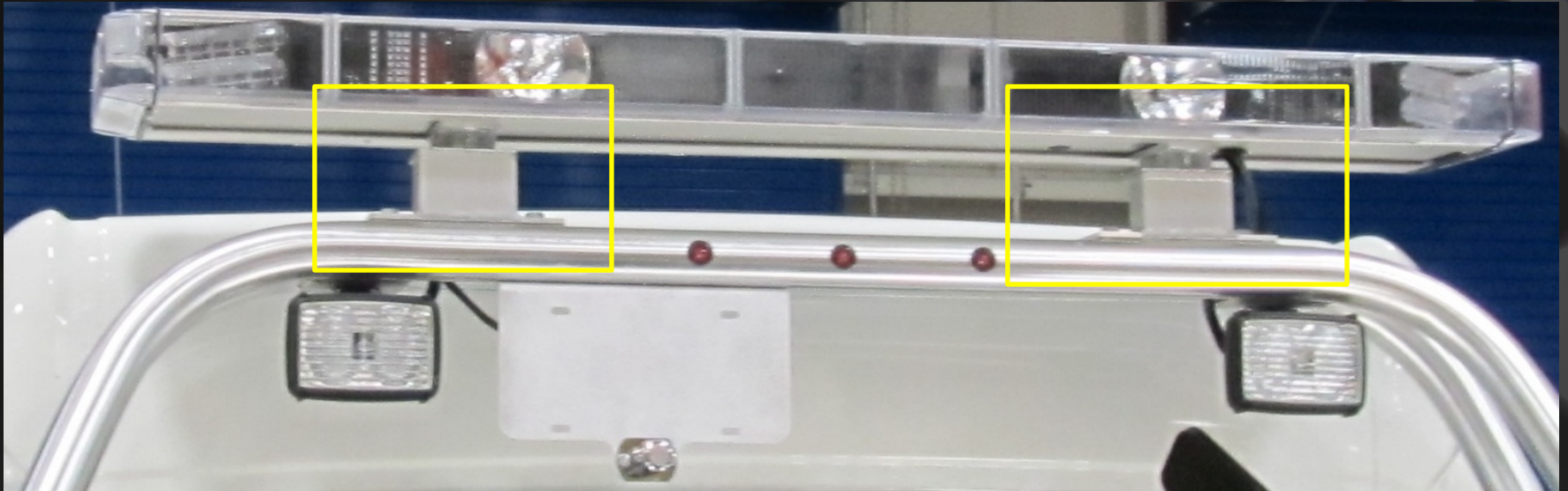


Can be painted if desired



Optional Aluminum 3" Pylon Spacer

124002678



2009 Style 38" Tubular Pylon

124004254



Allows for two lightbars

51" Aluminum Tubular Pylon

124003005



Can be painted if desired

2012 Stylized Pylons



124004459 is 38"

124004498 is 41"

124004508 is 48"

Pylon Wings

124002478 (pair)



Does not Fit the 2009 38" Pylon, 124004254

Fits the 3003 & 3005 Pylons

Does not include lights

Rotator Aluminum Tubular Pylon

124002695 (includes electrical swivel) 1060S/1075S
124004150 (no swivel required) 1130/1140/1060 Fixed



Can be painted if desired

Stainless and Dress-up Options Saddle Tunnel and Tool Boxes

KW RH Dummy Stack

124004499



2010 Bodies



1 1/4" Handrail Kit

124002512



PolyBilt Body Option (Roll-up Doors)

Available in 156, 180, 204 and 228 Tandem
and 180, 204 and 228 Tri-axle



(Painted Aluminum Doors Optional)

2-Door Stainless Kit

124002611



Tunnel Box Stainless Shown is Sold Separately

3-Door and 3212CX Stainless Kit

124002613



4-Door Stainless Kit

124002614



Rotator Tri-Axle Stainless Kit

124002610



(Tunnel Box Stainless is Sold Separately)

3212 Stainless Kit

124002612



Tunnel Box Stainless Shown is Sold Separately

Universal Crossover Tunnel

124004446



Century Installation



Vulcan Installation

24" Tunnel Box 124004384 (4024 and larger)
24" Tunnel Box 124004385 (3212 and 600R)
Stainless Kit 124004403

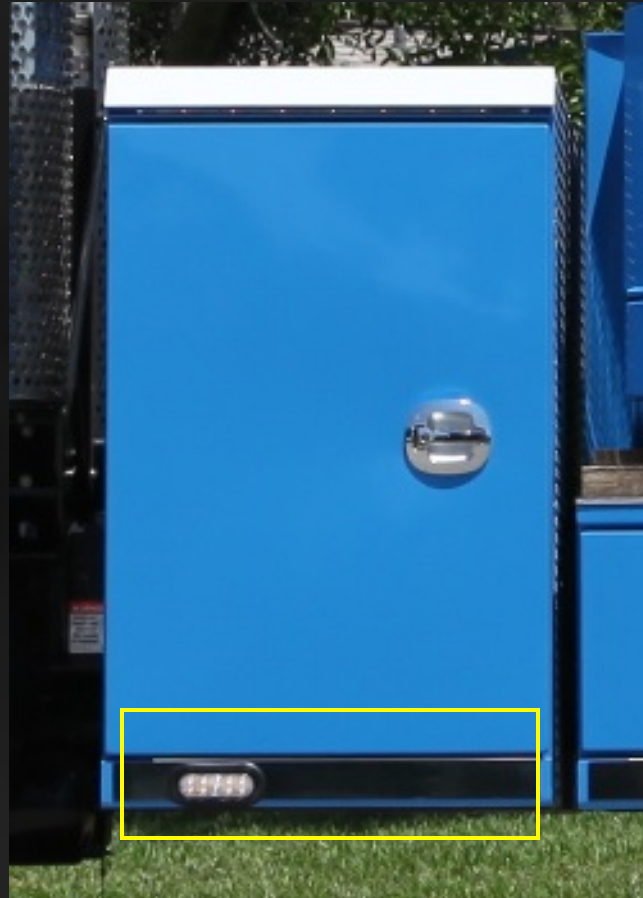


30" Tunnel Box 124004386

Stainless Kit 124004402

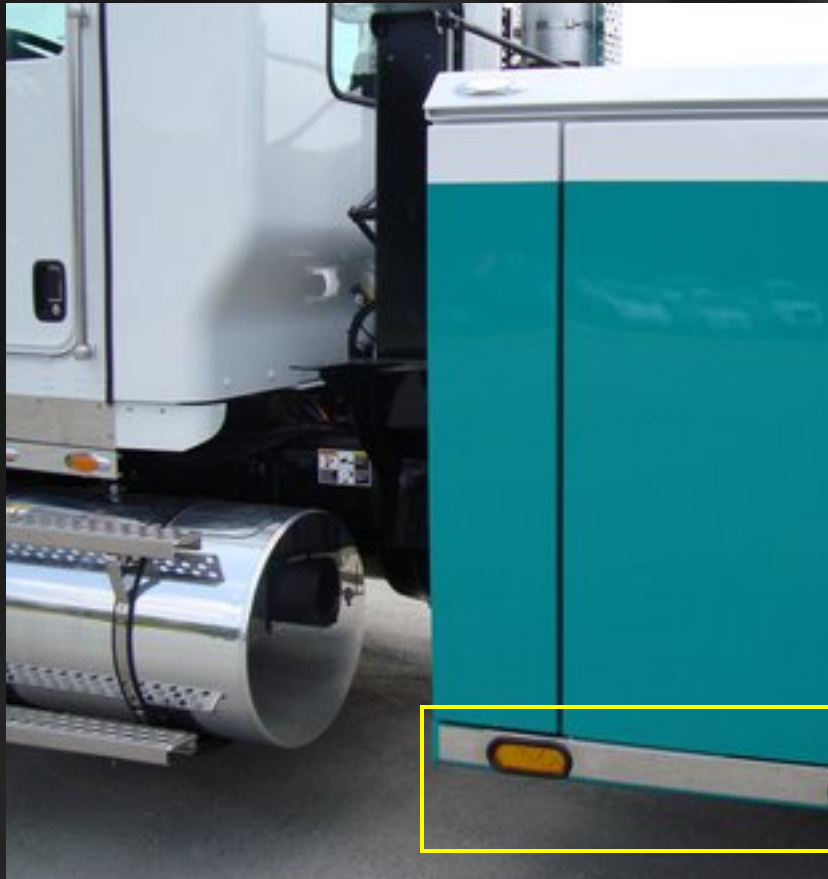


36" Tunnel Box 124004387 (4024 and larger)
36" Tunnel Box 124004388 (3212 and 600R)
Stainless Kit 124004256



(Rotator Pod Box Stainless is Sold Separately)

48" Tunnel Box (Door) 124004389 (4024 and larger)
48" Tunnel Box 124004538 (3212 or 600R)
Stainless Kit 124002633



48" Tunnel Box (Rollup) 124004138 Stainless Kit 124002633



Polished Rails



Stainless Fenderette (ea)

174016209



(3 shown)

Forks and Attachments

Fork Kit

Standard on:

4024, 5130, 5230, 7035,
9055, 1130, 1140, 1060,
1060S, 1075S2, 1075S



124001669



124001623



124001393



124001385




124001644




124001670



124001387



124004454



124002565

Spring Lift Adapter

124001389 (pr)



Standard on:

4024, 5130, 5230, 7035,
9055, 1130, 1140, 1060,
1060S, 1075S2, 1075S

Fork Reducer

124002430 (pr)
Optional on All Models



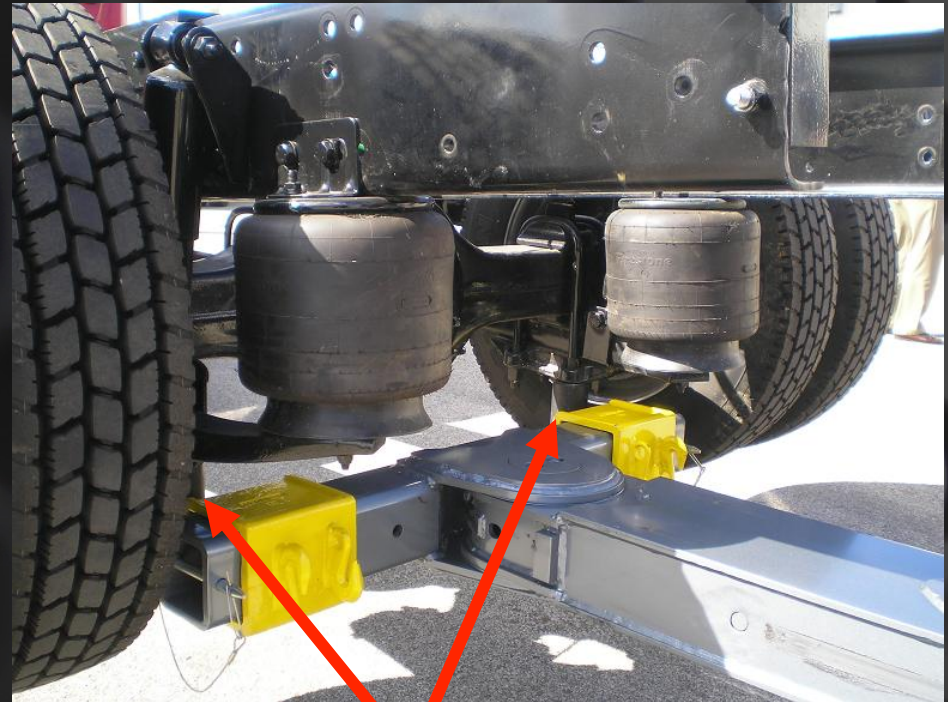
Lift Eye Attachment

124002634 (pr)
Optional on All Models



U-Bolt Adapter

124002632 (pair)
Optional on All Models,
Suggested 5130 and Larger Only



Rear Tows Only!

Offset Fork Adapter

Standard on 5130 and Larger Units 5" Crossbar - 124001717

Standard on 4024 4" Crossbar - 124002515

Standard on 3212 Crossbar - 124002516



Riser Bracket

4" Crossbar 124001724 (pr)
5" Crossbar 124001514 (pr)
3212 Crossbar 124004078 (pr)



Standard on 9055, optional on all other models

Crossbar Chain Hook Adapter

124001420 (lh/rh pr) Standard on 5130 and Larger Units 5" Crossbar

124002048 (lh/rh pr) Standard on 4024 4" Crossbar

124002517 (lh/rh pr) Standard on 3212 Crossbar



Chain Hook Adapters

124002229 (lh/rh pr)



Optional on All Models,
Suggested 5130 and Larger Only

Pintle Hook, Tow Ball, & 5th Wheel Attachment for 3212

124002645



Pintle Hook Kit

124002211

Optional for 4024 and Larger Units



King Pin Attachment Kit

124001948



Requires 124002211 Pintle Hook Kit

Optional for 4024 and Larger Units

5th Wheel Adapter Kit

124001833



Requires 124002211 Pintle Hook Kit
Optional for 4024 and Larger Units
For Empty Trailers Only-24K Capacity

Tow Ball Adapter

124002431



Requires 124002211 Pintle Hook Kit
(Shown with optional Convert-a-Ball shank on Left)

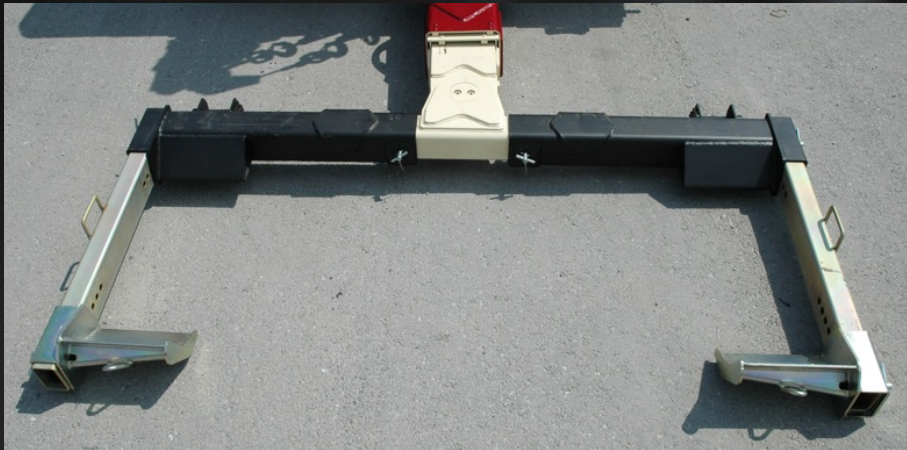
Convert-a-Ball

174017093 - optional on all Models



5x5 Bus Lift

124001914 - Optional on 5130 and Larger Units



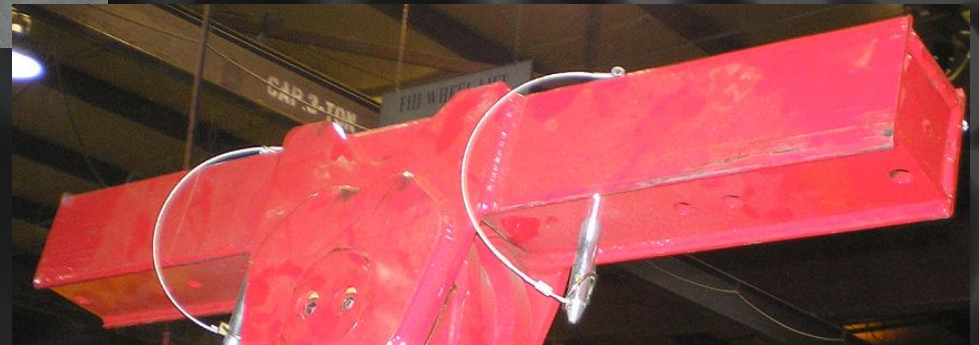
4x4 Bus Lift 124002033 Optional on 4024

XHD Tire Lift

(Includes XHD 5x5 Crossbar)
Optional with Century 9055 and larger units

Field Retrofit 124002853

Factory Install 124002808



Bus Lift Storage System

124002587 For 5x5 Crossbar
Optional on 5130 and Larger Units
Does not fit Rotator Boxes



Can be used with both 124001914 (Heavy Duty) and
124002808 (Extra Heavy Duty) lift systems

Bus Lift Storage System (External)

124004380 For 5" x 5" Crossbar
Optional on 5130 and Larger Units



Can be used with both 124001914 (Heavy Duty) and
124002808 (Extra Heavy Duty) lift systems

6,000 lb. L-Arm System

124001738 For 5x5 Crossbar
Optional on 5130 and Larger Units



124002416 for a 4x4 crossbar in a 4024

Spade Blade Attachment 124002401(pr) D-Ring Kit 12x15 Spades 124002537(pr)



Use with 4024, 5130, 5230, 7035, and 9055 without optional outriggers

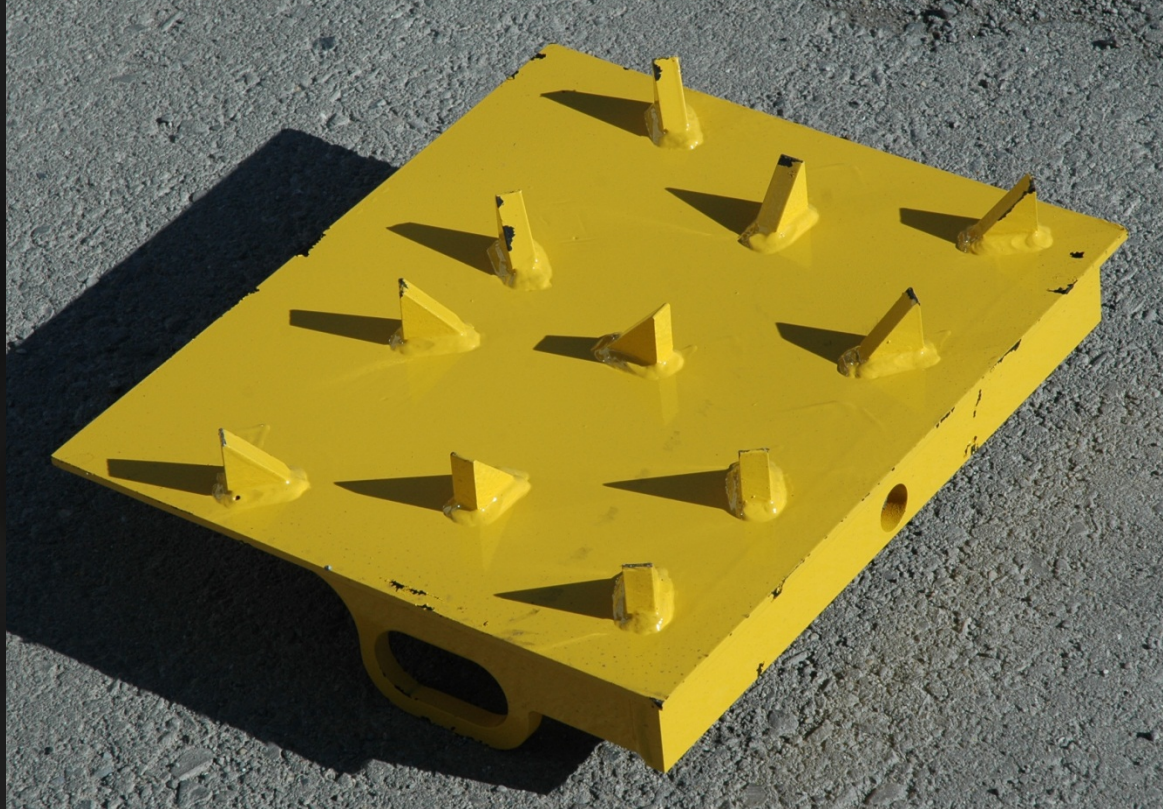
Pad Base Extension Rear Stabilizer 124002618 (each)



Use with 4024, 5130, 5230, 7035, and 9055 without optional outriggers

Ground Penetrating Plate

124004091



Fits Rotator, Integrated, and XP units
Sold each, includes a pin

Accessories

36' Wireless LED Wide Load Bar

124004494 Optional on all Units
Includes 7 Way Plug-in Transmitter



36" Wide Load Bar

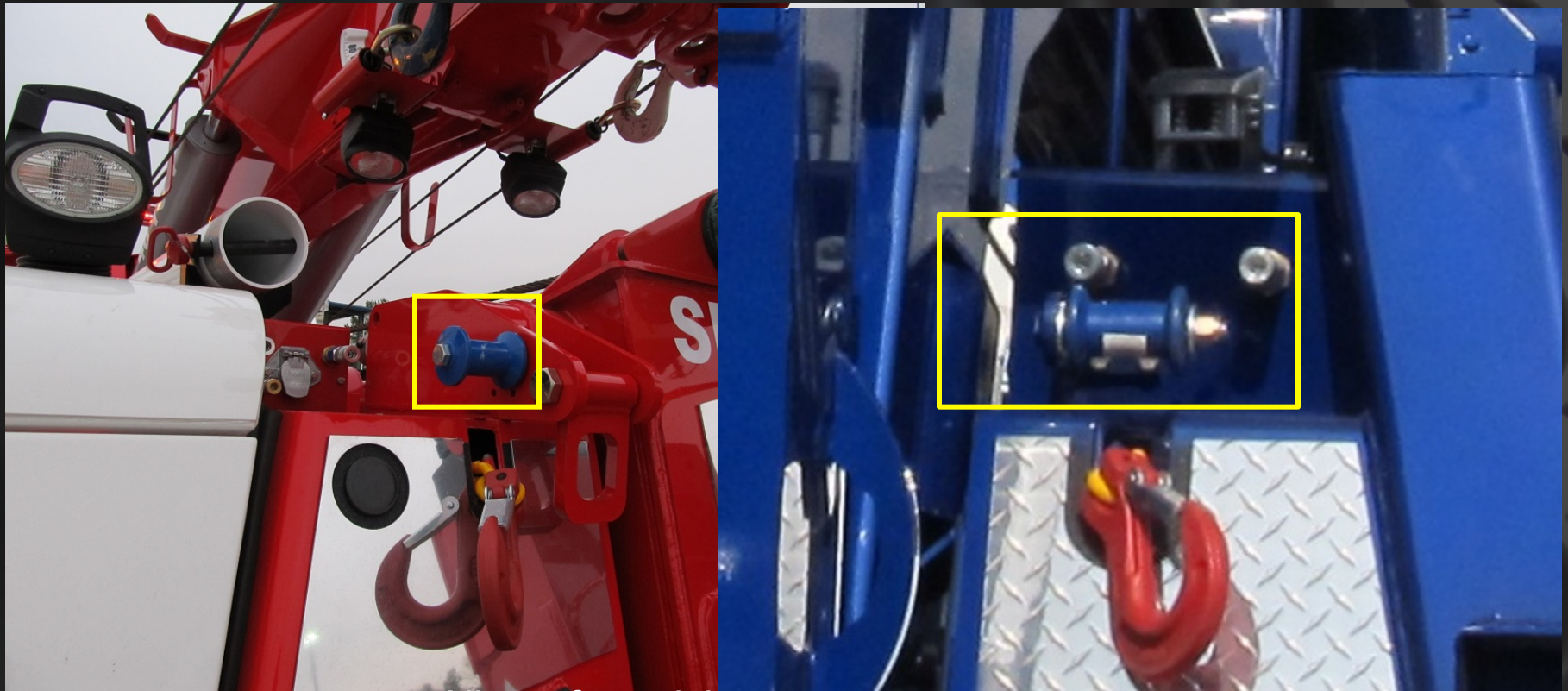
174019036 Optional on All Units
Cable sold separately



174019033 - 60' 7-Way cable

Safety Chains Roller Kit

124004450 - Optional All Models except Rotator
124004473-Optional on Rotators except Dual H-Beam

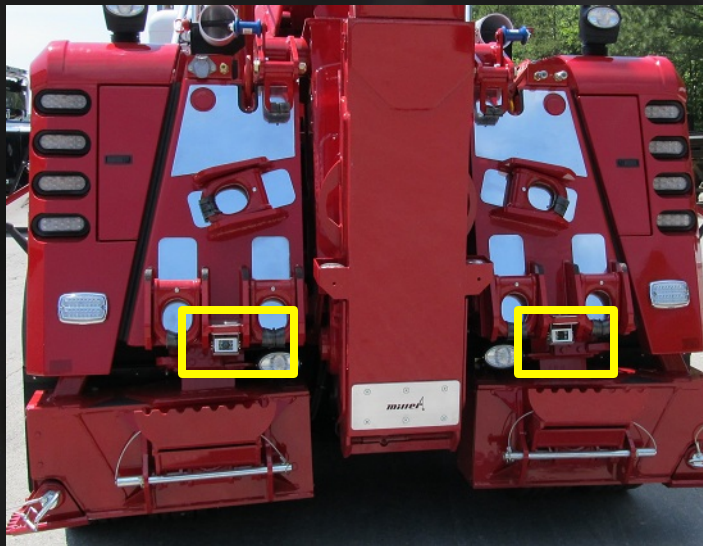


Allows for quicker retrieval and return of
safety chains into the safety chain pockets

Dual Color Camera Kit

124004442 - Optional on All Units

Includes the color screen inside the cab.



Rotator



Century

Tailboard Remote

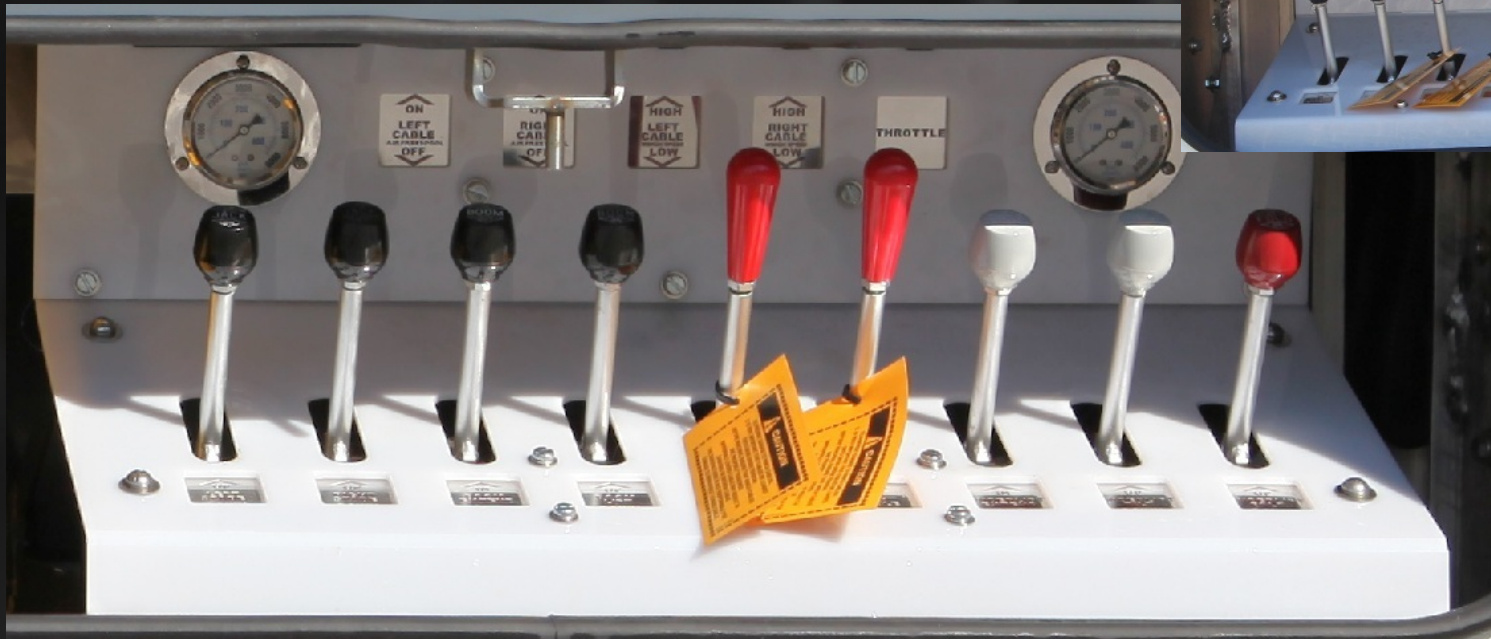
124001979 - Optional on All Units



Rocker switch style replaces push-button style

Lighted Controls *INTEGRATED* Units

124002796- Factory Install or Field Retrofit



Lighted controls for XP UNITS are available as
124002815 for Factory install or 124002813 for Field Retrofit

Colored Control Handle Kit

124004470- Factory Install or Field Retrofit



Includes enough colored handles to do both sides of a large unit from 4024 through a 6-winch Rotator

**Shackles, Straps, Chains,
Snatch Blocks
and Related Items**

Washable Chain Box

124002698



Optional on 4024, 5130, 5230, 7035, 9055, and 1060 Units

Alloy Screw-Pin Shackle Kit

124004083 - The shackle kit was made to fit with the Endless Loop Strap Kit (124002697, Sold Separately)



Kit Includes:

- 2 ea) 1 1/4" Alloy Master Links 18 Ton
 - 2 ea) 1" Alloy Screw-Pin Shackles 8 1/2 Ton
 - 6 ea) 1 1/4" Alloy Screw-Pin Shackles 12 Ton
 - 2 ea) 1 1/2" Alloy Screw-Pin Shackles 17 Ton
- All Made in USA

Optional on all models

Endless Loop Strap Kit

124002697



COLOR CODE	CAPACITIES IN POUNDS			MINIMUM LENGTH	INCLUDES TWO EACH
	VERTICAL	CHOKER	BASKET		
YELLOW	8400	6720	16800	3 FT	4 FT, 6FT
RED	13200	10560	26400	3 FT	8 FT, 12FT
BLUE	21200	17000	42400	6 FT	12 FT, 16 FT



Optional on all models

(124004521 is the same kit but without the blue straps, for 3212)

Chain Kit



174025093

- 2 - 5/16" - 3/8" Ratchet Binders
- 2 - 5/16" x 10' Chains
- 2 - 5/16" x 20' Chains
- 2 - 3/8" x 10' Chains
- 2 - 3/8" x 20' Chains
- 2 - 1/2" x 10' GR100 Chains
- 2 - 1/2" x 20' GR100 Chains

Optional on all models, suggested for 4024 and Larger Units

(124002523 is the same kit but without the 1/2" chains, for use with 3212)

Ratings Labels

Decals only 0501656
(included with 174025093 and 124002523 Chain Kits)

CHAIN RATING

GRADE 100 - BLUE HOOKS

SIZE:	WORKING LOAD LIMITS
• 1/2"	15,000 LBS
• 5/8"	22,600 LBS

GRADE 70 - GOLD HOOKS

SIZE:	WORKING LOAD LIMITS
• 5/16"	4,700 LBS
• 3/8"	6,600 LBS
CHAIN BINDER	6,600 LBS

CABLE RATINGS

MAIN BOOM & DRAG WINCH

20,000 LB 5/8" X 6 X 37 IWRC XIPS
35,000 LB 5/8" X 6 X 37 IWRC XIPS

50,000 LB 3/4" X 6 X 37 IWRC XIPS
60,000 LB 7/8" X 6 X 37 IWRC XIPS

5/8" CABLE WORKING LOAD LIMIT: 11,600 LBS
5/8" CABLE BREAKING LOAD LIMIT: 41,200 LBS

3/4" CABLE WORKING LOAD LIMIT: 16,560 LBS
3/4" CABLE BREAKING LOAD LIMIT: 58,800 LBS

7/8" CABLE WORKING LOAD LIMIT: 22,400 LBS
7/8" CABLE BREAKING LOAD LIMIT: 79,600 LBS

ENDLESS LOOP SLINGS AND SCREW-PIN SHACKLES

SIZE/LENGTH	SLING COLOR/ USE SHACKLE	CAPACITIES IN POUNDS		
		VERTICAL	CHOKER	BASKET
1" ALLOY SHACKLE		17,000	17,000	17,000
4'	YELLOW	8,400	6,720	16,800
6'	YELLOW	8,400	6,720	16,800
1 1/4" ALLOY SHACKLE		24,000	24,000	24,000
8'	RED	13,200	10,560	26,400
12'	RED	13,200	10,560	26,400
1 1/2" ALLOY SHACKLE		34,000	34,000	34,000
12'	BLUE	21,200	17,000	42,400
16'	BLUE	21,200	17,000	42,400
1 1/4" ALLOY MASTER LINK	ALLOY	36,200	36,200	36,200

5/8" GR100 Chain Kit

124002820



Includes two each 5/8 GR100 10' and 15' long with a grab hook on each end
Optional on all models, suggested for 1075S and 1075S2

3/8" EDOG Eliminator GR100 Chain Bridle

124004153



Optional on all models

1/2" EDOG Eliminator GR100 Chain Bridle

124004155



Optional on all models, suggested for 9055 and Larger Units

1/2" GR100 Foundry Hook Kit

124004156 (2 Hooks, 2 Shackles)



Optional on all models - Does not include the Blue Chain

Crosby Alloy 8-Ton Snatch Block

124001058



Made in USA

Optional on all models, suggested for units with 35K and smaller winches

Crosby Alloy 12-Ton Snatch Block

124001886



20 lbs lighter than previous!
Made in USA

Optional on all models, suggested for units with 50K and larger winches

Spreader Bar Kit (each) 124004417



Shown with optional shackles and straps
Optional 124004426 Mounting kit not shown

Short Spreader Bar Tube Only 124004469



Shown with 124004417 bar for reference, use those ends
Optional 124004426 Mounting kit not shown

Swivel Equalizer Kit 124004471



Tool Compartment Organization and Storage

Snatch Block Bar

124004132 (ea)



Can be used in all large tunnel boxes-snatch blocks sold separately

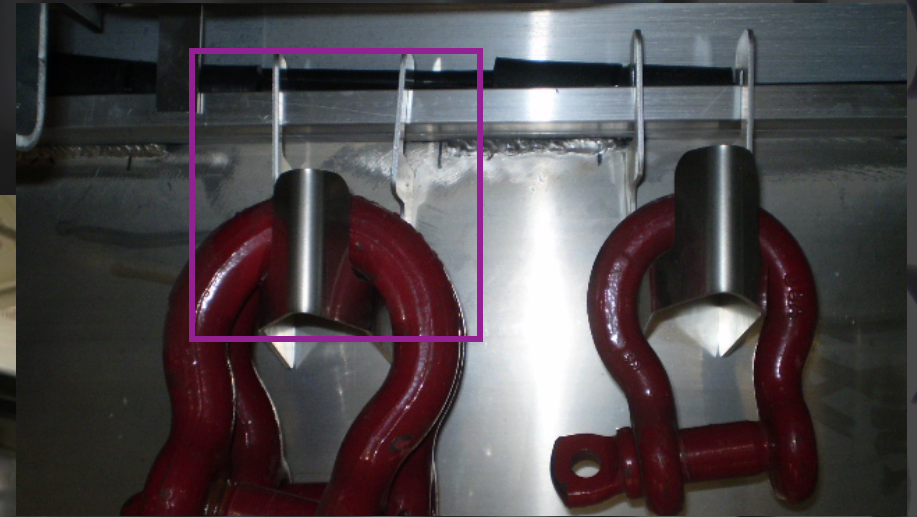
Dual Snatch Block Storage Kit

124004463 (ea)



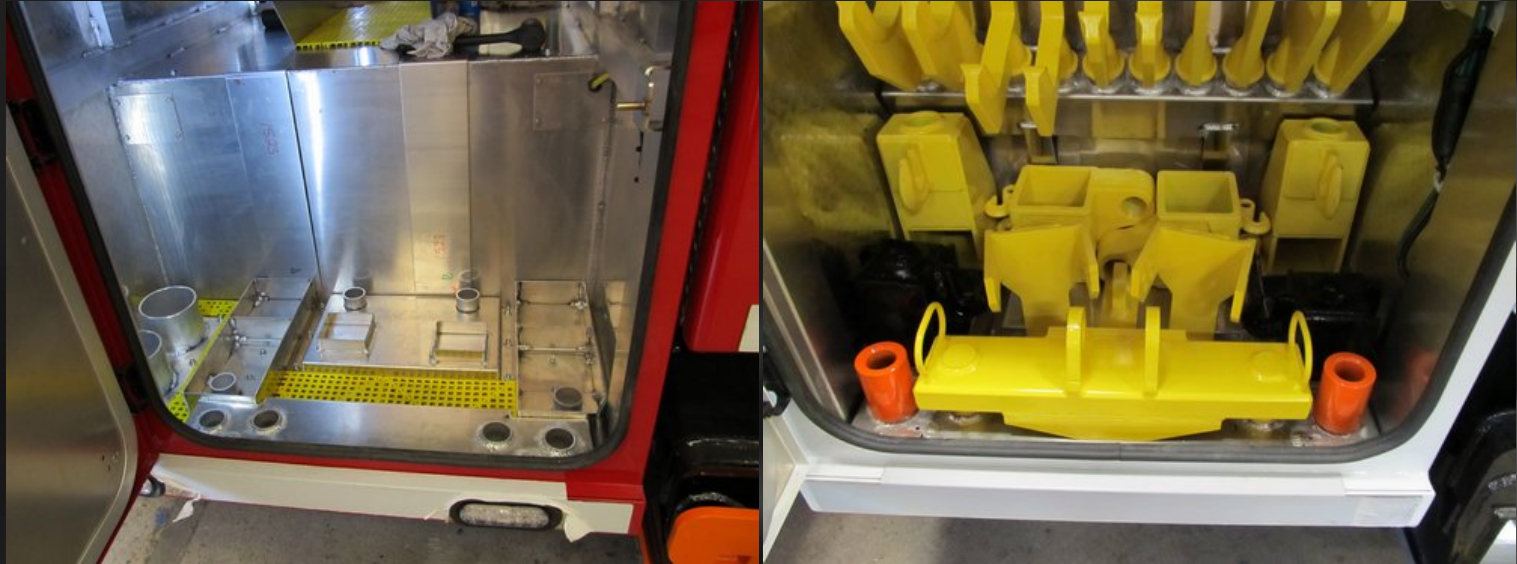
Can be used in all large boxes-snatch blocks sold separately
2 kits shown-each kit contains 1 top and 1 bottom bracket

Shackle and Accessory Hanger Kit 124004414



Includes 5 hangers-does not include shackles

Tunnel Box Attachment Storage 124004539



Attachments and Spreader Bar Tube Storage Not Included.
Works in 36" and 48" Tunnel Boxes

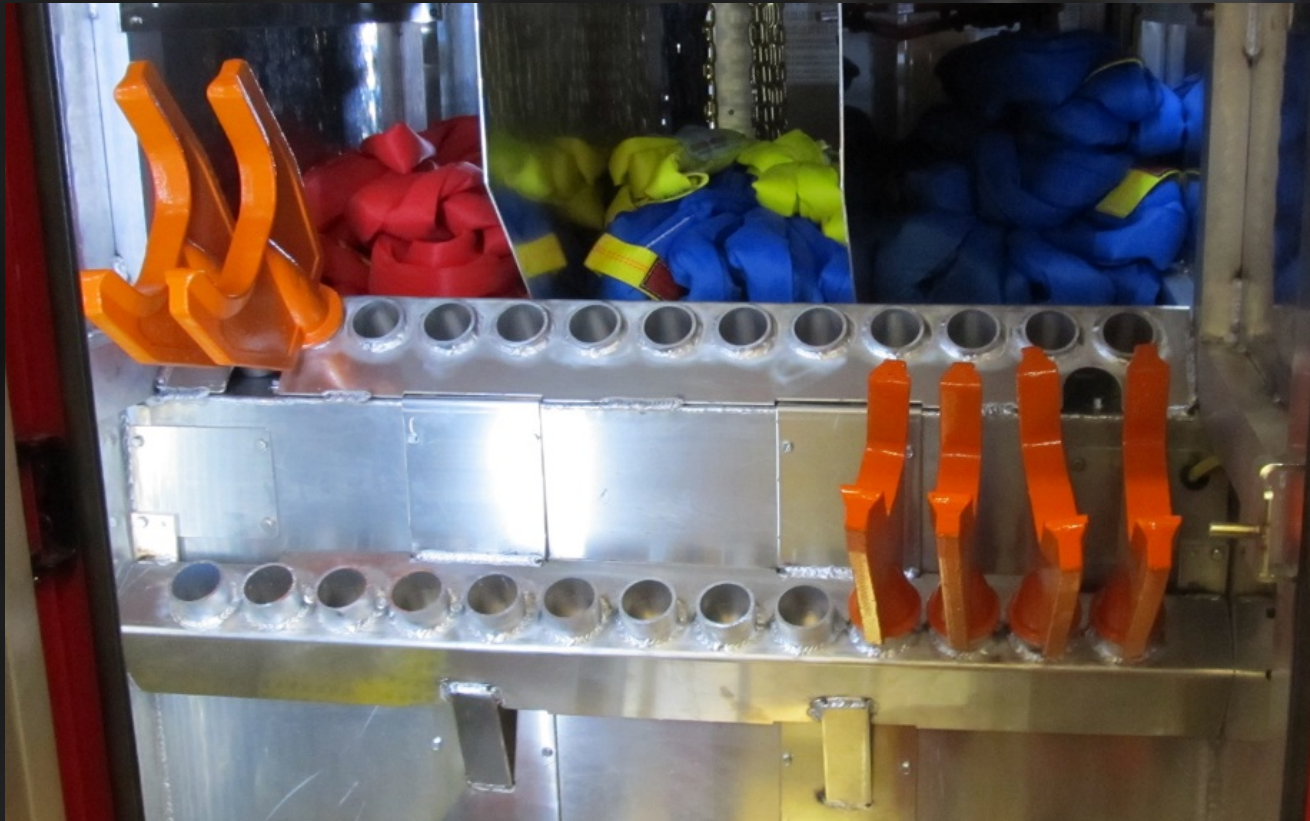
36" Tunnel Box Fork Storage

124004540



Forks and attachments shown are not included

48" Tunnel Box Fork Storage 124004541



Forks shown are not included

Collapsible Folding Ladder

124004413



Modular Toolboxes



3-Drawer 124002667



4-Drawer 124004166



Modular toolboxes supercede the previous 3-drawer and replace the 124002668 7-drawer boxes. These new boxes can be combined to make 6, 7, 8, or 9-drawer boxes-or any other combination of drawers. They fit all bodies 4024 and larger.



Tunnel Box Shelf Kit

124004131 (48" box)

124002844 (36" box)

124004528 (30" box)

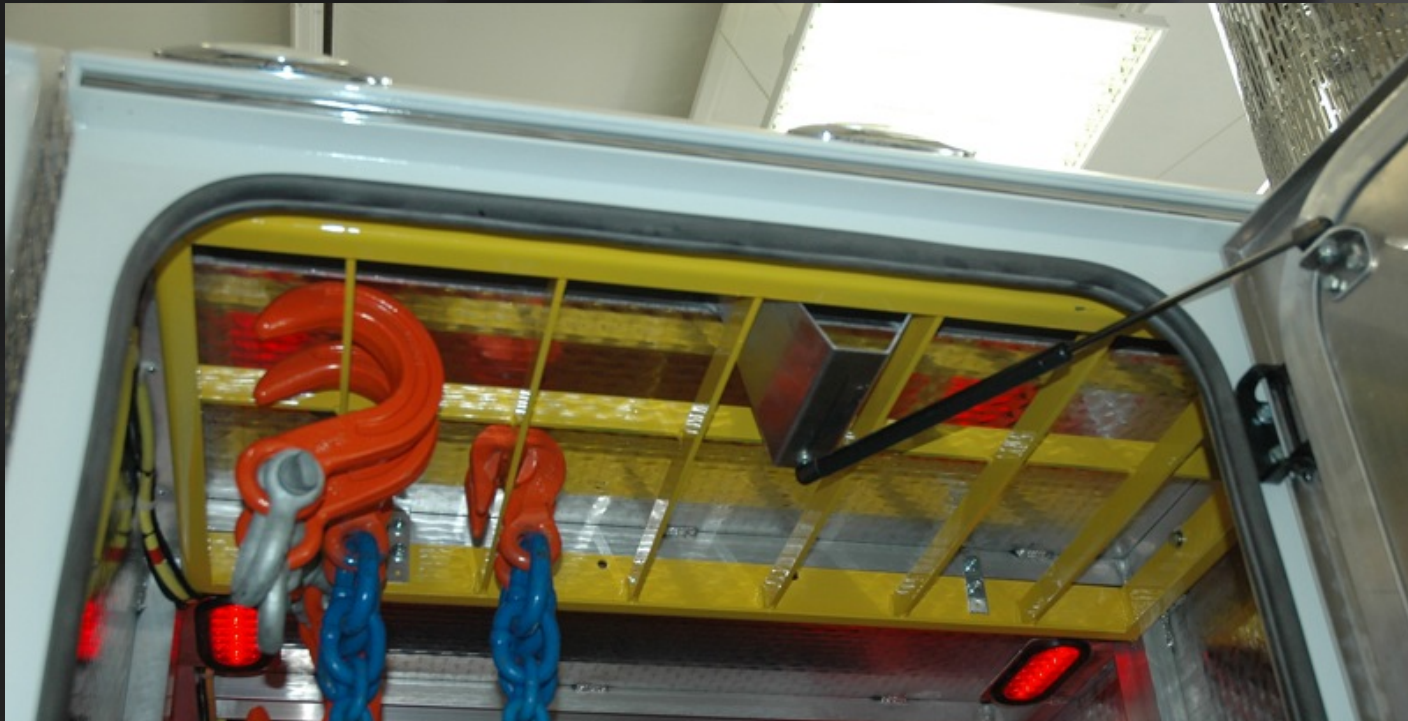


Straps, lumber, and oil dry shown not included

Chains, rack, and attachments sold separately

Chain Rack For 48" Tunnel

124004130



Chains and attachments sold separately

Air and Electric Storage Kit

124004258



Optional on All Units

Includes 2 red and 2 blue coiled air lines with fittings, coiled electric cable, and storage rack.

Folding Heated Sink Kit

124002562



Heated to keep from freezing

Boom Angle Indicator

Standard on all Rotators
124002468 For Integrated
124002440 For 1060



XP Add-Ons

XP Standard Pylon

124002830



Shown with optional lights

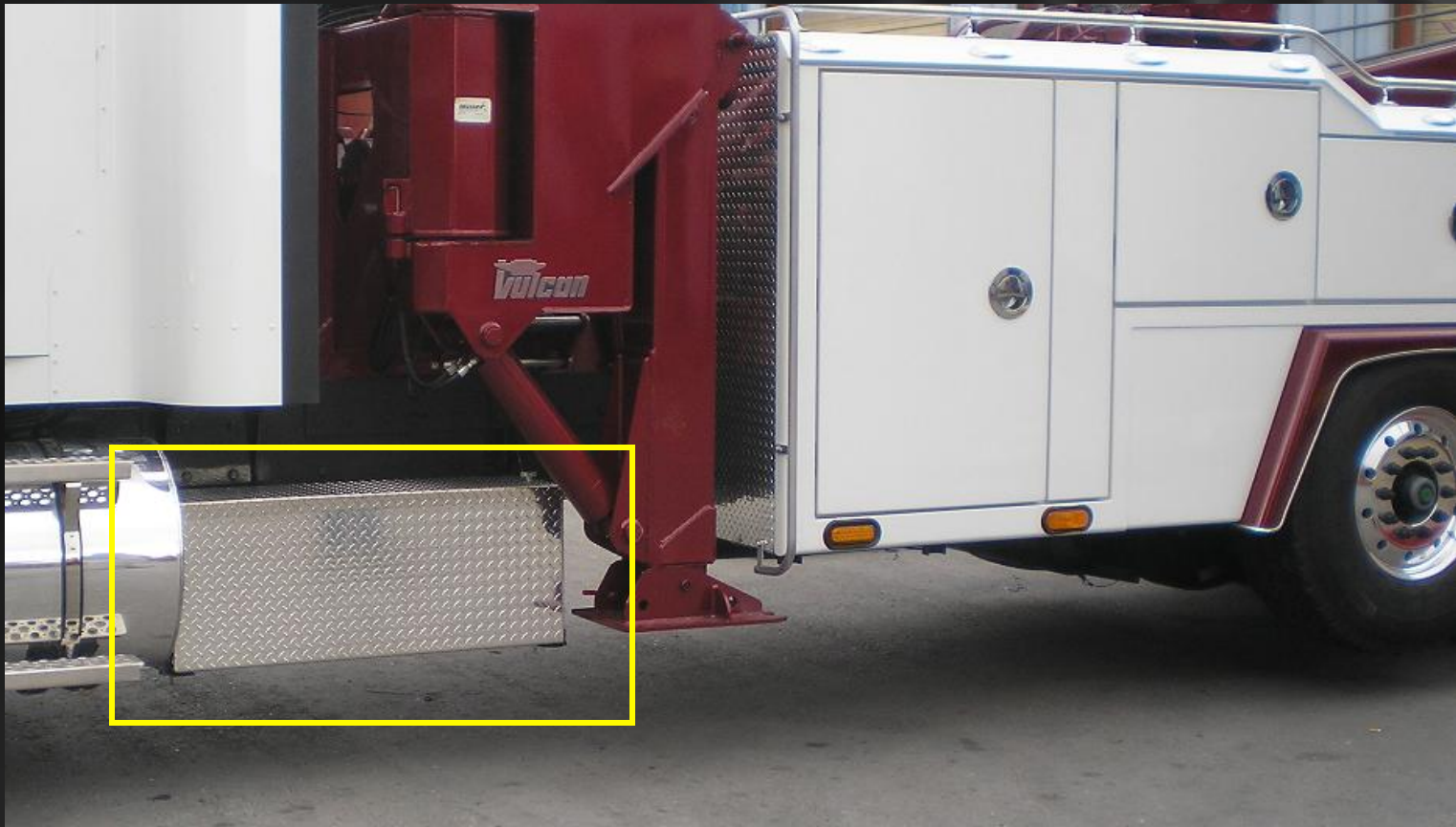
XP Aluminum Tubular Pylon

124004193



XP Storage Box (each)

124004099



Approximately 48" long, 19" tall, and 14" wide

XP Rear Outriggers

124004092



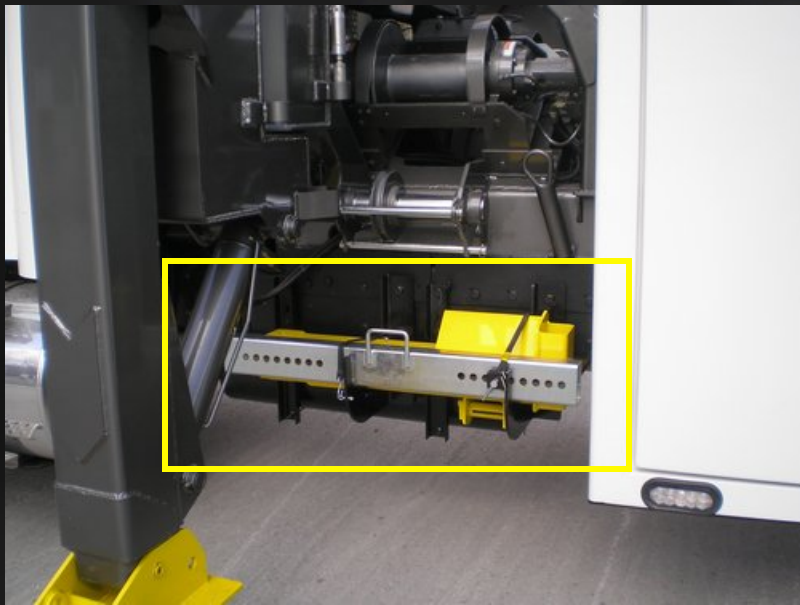
XP Spade (each)

124002619



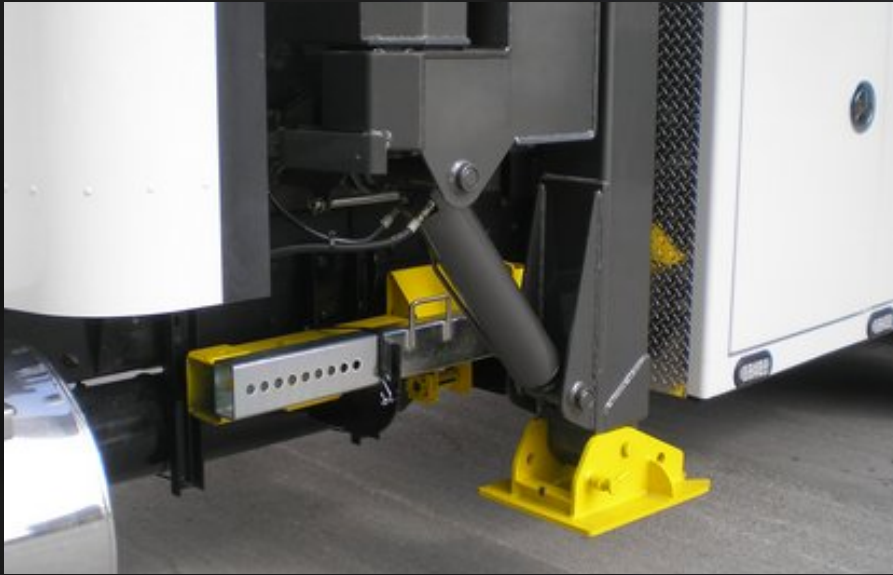
Bus Lift Storage System (External-XP Units)

124002525 For 5" Tall Crossbar



Can be used with both 124001914 (Heavy Duty) and
124004079 (Extra Heavy Duty) lift systems

Bus Lift Storage for XP and RXP Units



124002525 for XP



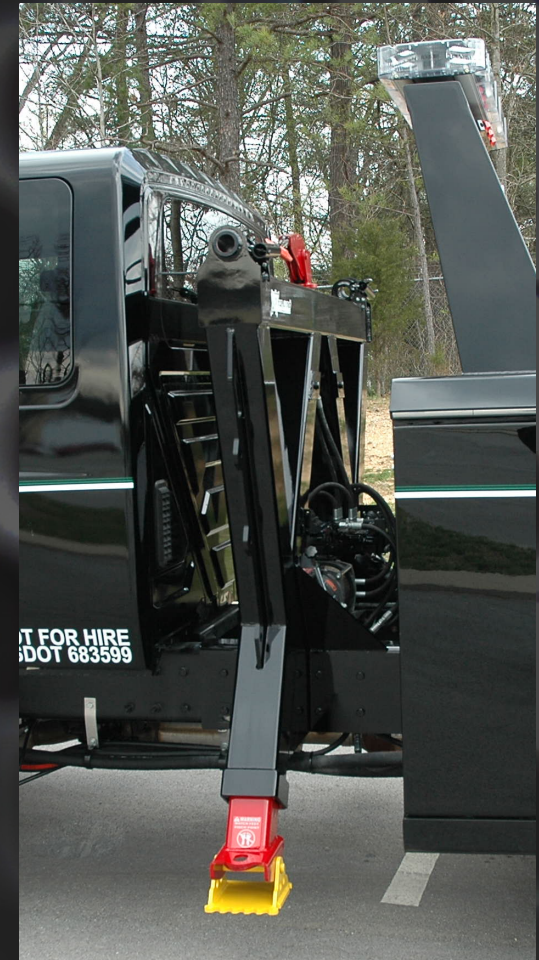
124004190 for RXP

Can be used with both 124001914 (Heavy Duty) and
124004079 (Extra Heavy Duty) lift systems

SP Side Pullers

SP12,000 Sidepuller

124003034



Requires an additional 19" CA for Wreckers

SP20,000 Sidepuller

124002731



Requires an additional 27" CA



Rotator Options

Rotator Controls Explanation By Model

- 1130
 - Available with standard or proportional controls
 - Standard controls are non-lighted
 - Optional Proportional controls are lighted
 - Dual turret mounted winches are not available on 1030
 - The only auxiliary winch available is a single 25K deck winch
- 1140
 - Available with standard or proportional controls
 - Standard controls are non-lighted and control up to 1 auxiliary winch
 - Optional Proportional controls are lighted and control up to 2 auxiliary winches
 - Dual turret mounted 15K winches are available and require proportional controls
 - The only deck winch available is the single 35K deck winch (which does not require, but is available with, Proportional controls)
 - You must choose between either no auxiliary winches, a single 35K deck winch, or 2 turret mounted 15K winches. Turret mounted and deck mounted winches are not available together on 1140.

Rotator Controls Explanation By Model 1060S/1075S2/1075S

- Standard controls are only available in non-lighted configuration and will only control up to 1 optional deck winch. They are not available with the optional dual turret mounted winches.
- Proportional control upgrade is only available in lighted configuration, and include manual control handles on the drivers side only. Passenger side control handles are available as an additional add on option.
- Proportional controls are available with up to 4 auxiliary winches.
- Proportional controls are required for 2 or more auxiliary winches.

Rotator Standard Controls

1130-124004211
1140-124004208
1060S/1075S-124002588



Allows for a maximum of 1 deck drag winch. Not available with two or more auxiliary winches. Includes manual control handles for all outriggers

Rotator Proportional Lighted Controls

New Units See Matrix

Includes LH Only Manual Controls-Includes Panels For Both Sides As Shown
(Also Available As A Field Retrofit Kit 124002824)



Driver Side



Passenger Side

Proportional Controls Include electric control switches for all outriggers

Optional Passenger Side Manual Lighted Controls Upgrade

A Proportional system is required for use with this add-on option

New Units 124002803

(For Field Retrofit Use 124002800 -Only Includes Lighted Panels For Both Sides)



This option adds manual controls to the passenger side and replaces the panels as shown on the lower right of the previous slide.

Colored LED Control Lamps



(Optional Colored control handles)

Standard on all lighted control rotators. Has colored LED lamps to identify switch functions.

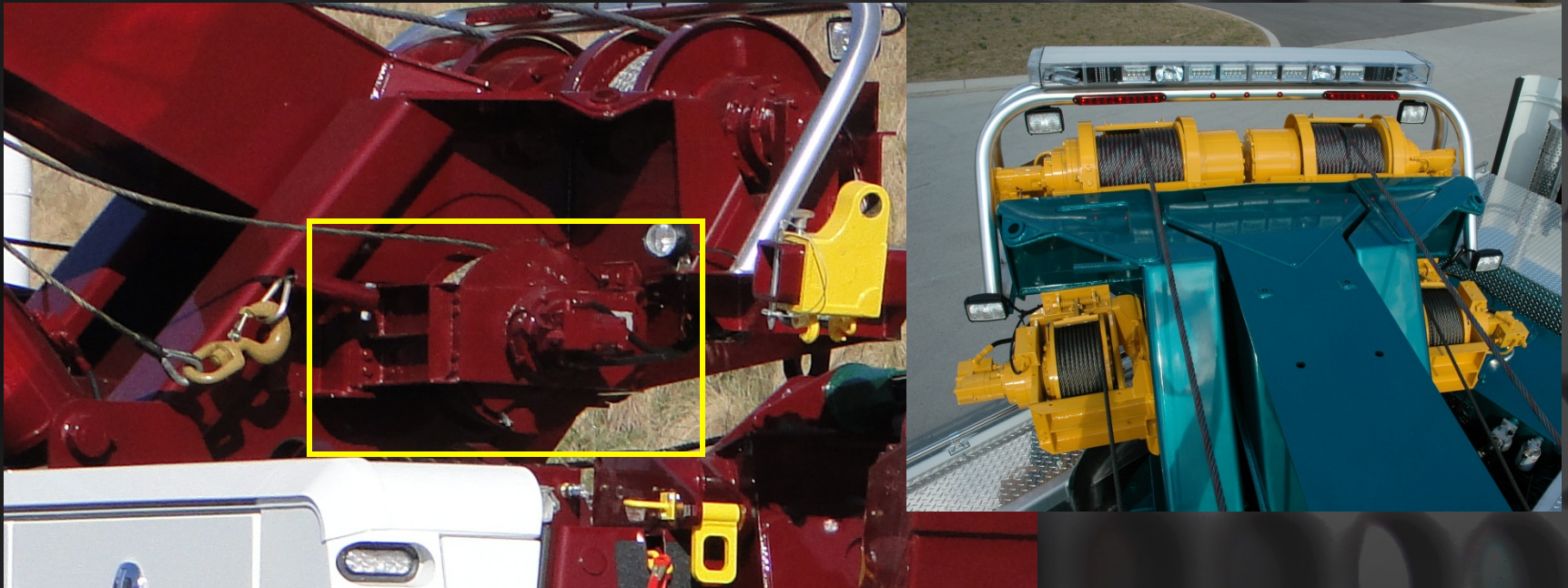
Rotator Controls Matrix

Determine which model in the red, then choose the number of drag winch(es) desired in black for that model. Continue to the right on the same line and select one of the numbers in the either of the green columns, the first number is for non-lighted controls, the second pair is for lighted/proportional controls. Based on your selection, you will need all the part numbers listed in that row in the yellow boxes. To add manual/lighted controls to the passenger side, you need to add 124002803 to your Husco proportional controls or 124004484 to your Walvoil proportional controls.

Model	Number of Drag Winches	Standard Controls, Non-Lighted	Parker Proportional Controls, Lighted	Walvoil Proportional Controls, Lighted	25k Drag	35k Drag w/o Walvoil	50k Drag w/o Walvoil	Dual 35K Drag w/o Walvoil	50k Drag w/ Walvoil	Dual 35K Drag w/ Walvoil	Dual 15K Turret 1140	Dual 22K Turret 1060S or 1075S/1075S2
1130	0	124004211	124004257	N/A	-----	-----	-----	-----	-----	-----	-----	-----
1130	1	124004211	124004257	N/A	124004229	-----	-----	-----	-----	-----	-----	-----
1140	0	124004208	124004178	SEE BELOW	-----	-----	-----	-----	-----	-----	-----	-----
1140	1	124004208	124004178	SEE BELOW	-----	124002628	-----	-----	-----	-----	-----	-----
1140	2	N/A	124004207	SEE BELOW	-----	-----	-----	-----	-----	-----	124004201	-----
1060S/ 1075S/1140	0	124002588	N/A	124004482	-----	-----	-----	-----	-----	-----	-----	-----
1060S/ 1075S/1140	1	124002588	N/A	124004482	-----	124002628	-----	-----	-----	-----	-----	-----
1060S/ 1075S/1140	1	124002588	N/A	124004482	-----	-----	124002623	-----	124004429	-----	-----	-----
1060S/ 1075S/1140	2	N/A	N/A	124004482	-----	-----	-----	124002600	-----	124004415	-----	-----
1060S/ 1075S/1140	2	N/A	N/A	124004482	-----	-----	-----	-----	-----	-----	-----	124004214-1060S 124004212-1075S
1060S/ 1075S/1140	3	N/A	N/A	124004482	-----	124002628	-----	-----	-----	-----	-----	124004214-1060S 124004212-1075S
1060S/ 1075S/1140	3	N/A	N/A	124004482	-----	-----	124002623	-----	124004429	-----	-----	124004214-1060S 124004212-1075S
1060S/1075S	4	N/A	N/A	124004482	-----	-----	-----	124002600	-----	124004415	-----	124004214-1060S 124004212-1075S

Dual 22k Turret Drag Winches

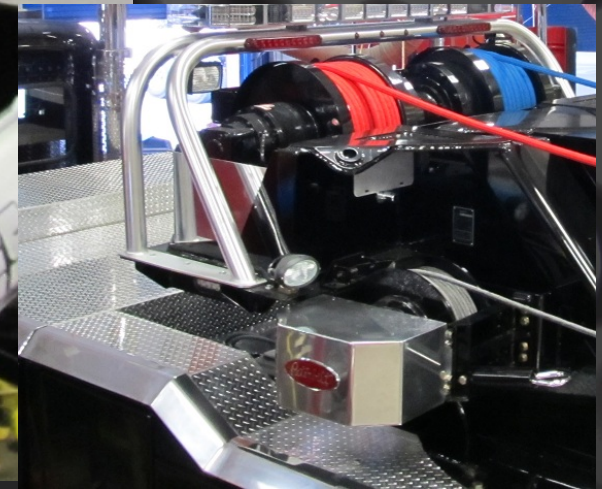
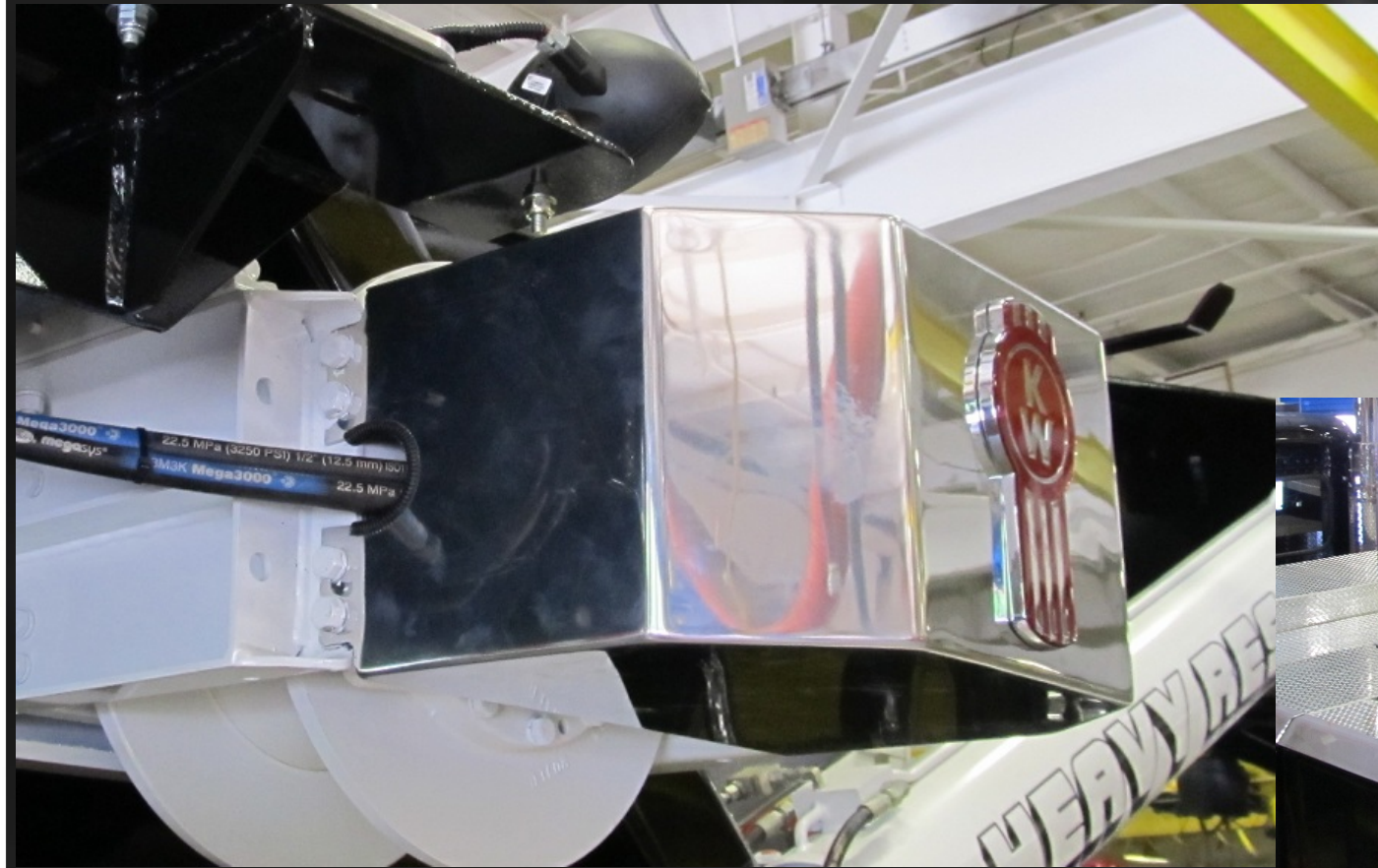
124004212 for 1075S and 1075S2
124004214 for 1060S



For customers who may want to add the dual turret winches at a later date, factory provisions can be added on a new unit, contact the factory for details.

22K Winch Covers (pr)

124004533



Kenworth or Peterbilt emblem shown is not included

Dual 15k Turret Drag Winches

124004201 for (1140 Only)

An 1140 can have the following winch combinations:

2 Main Winches

2 Main Winches and 2 - 15K Turret Drag Winches

2 Main Winches and 1 - 35K Belly Drag

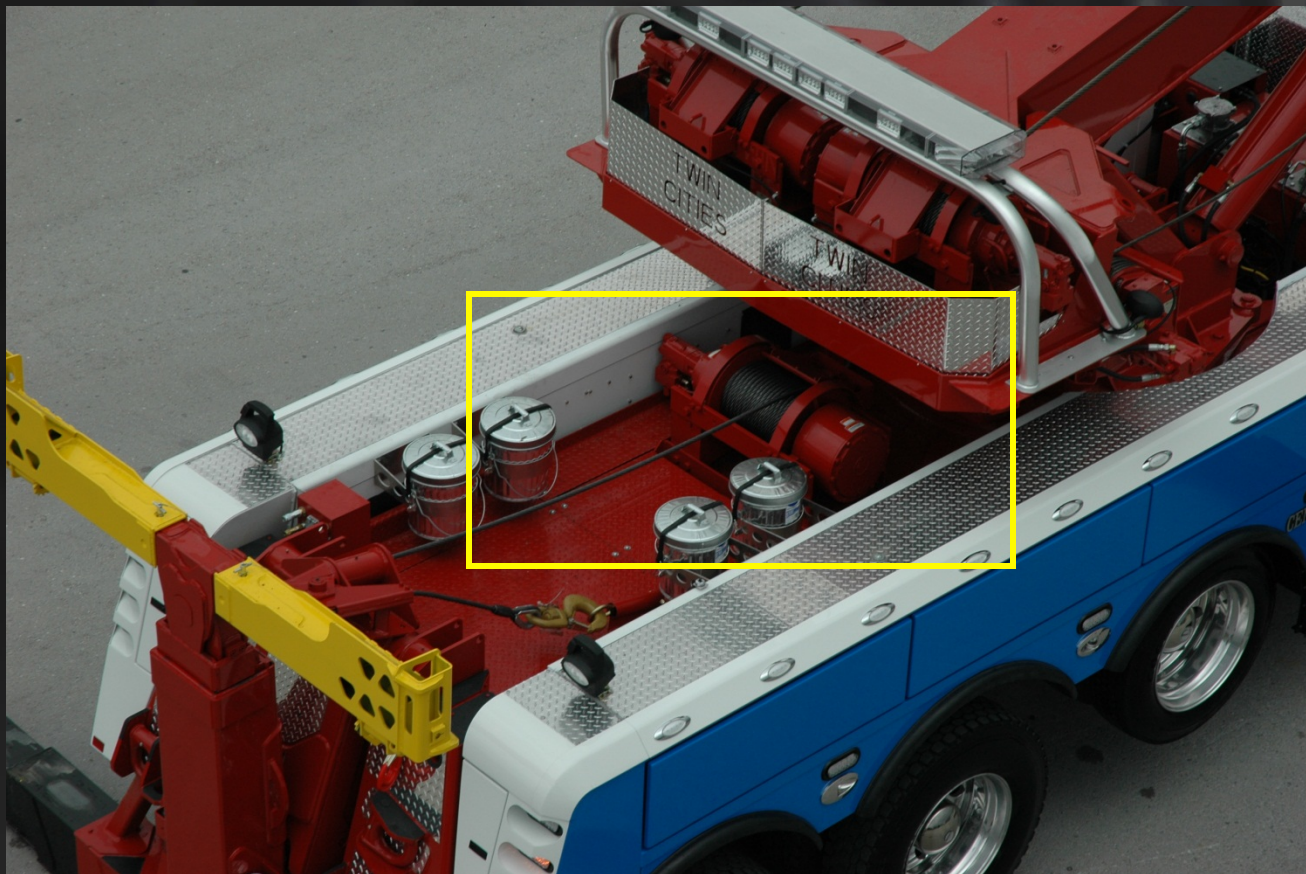


For customers who may want to add the dual turret winches at a later date, factory provisions can be added on a new unit, contact the factory for details.

35K Belly Drag Winch

124002628

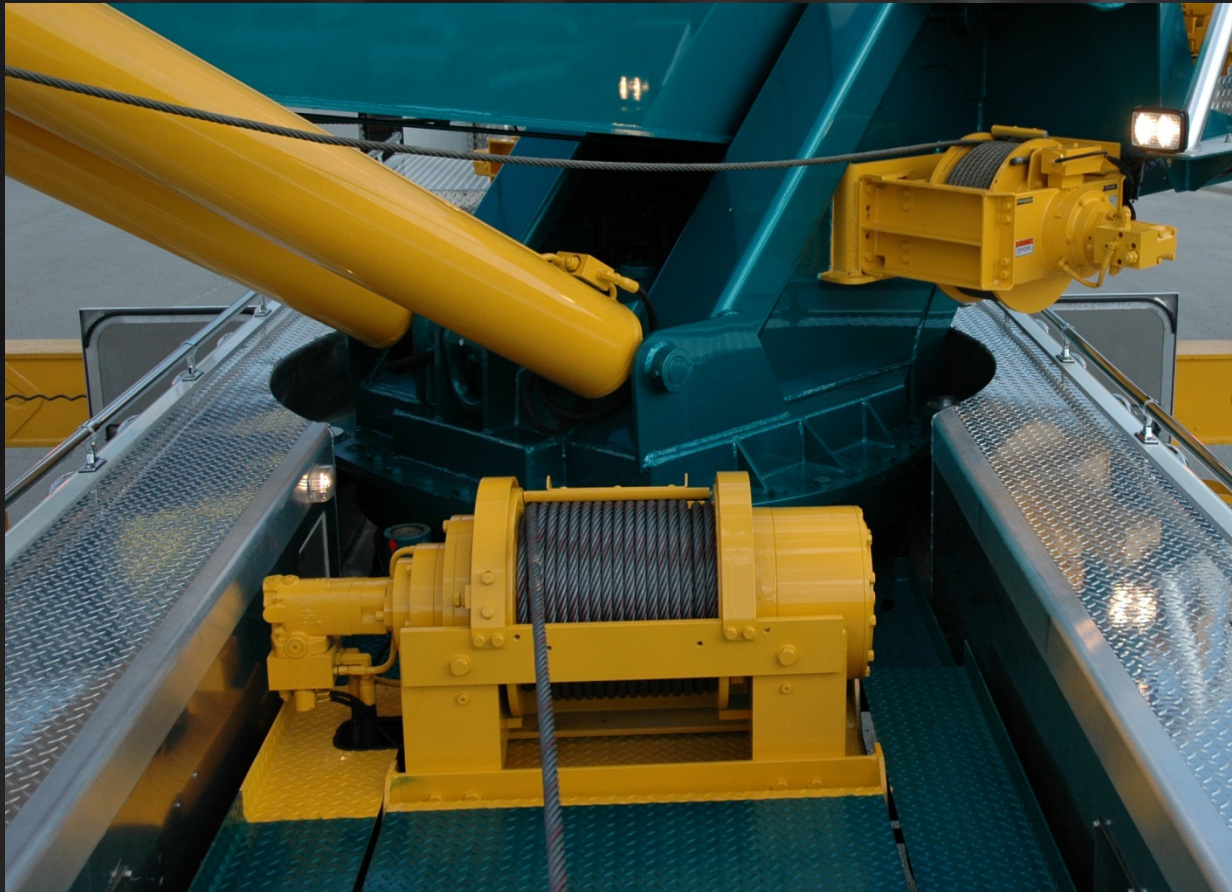
Requires appropriate controls-1060S/1075S and 1140



50K Belly Drag Winch

124002623

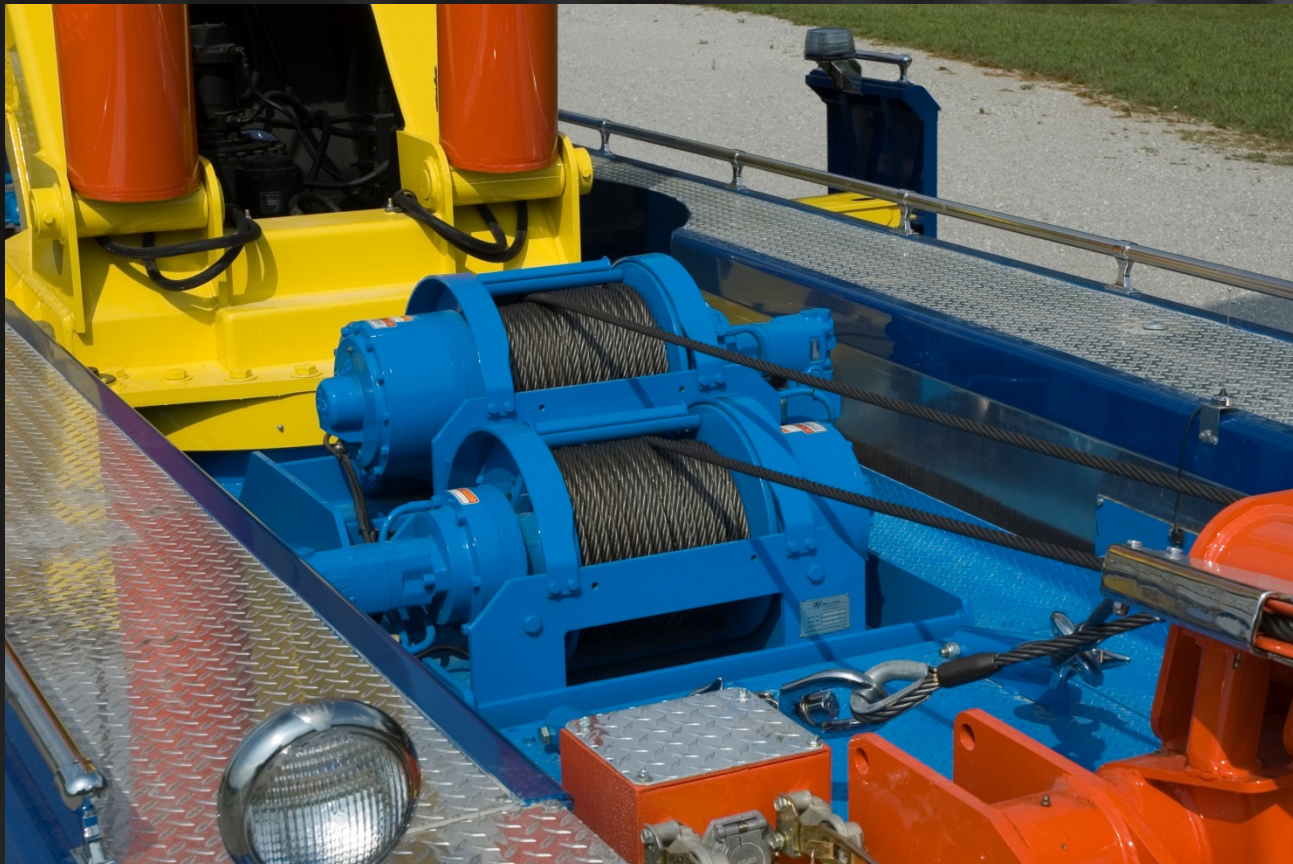
Requires appropriate controls-1060S/1075S Only



Dual 35K Belly Drag Winches

124002600

Requires appropriate controls-1060S/1075S Only



1130 25K Belly Drag Winch

124004229

Requires appropriate controls



1130/1140 RXP



1130/1140 RXP



Note new toolbox under legs-now standard (1 each side)

Rotator Tailboard Options

Diamond Plate Tailboard Alum Pkg 124002595 (10 Pieces)

Smooth Plate Tailboard Alum Pkg 124004185 (9 Pieces)

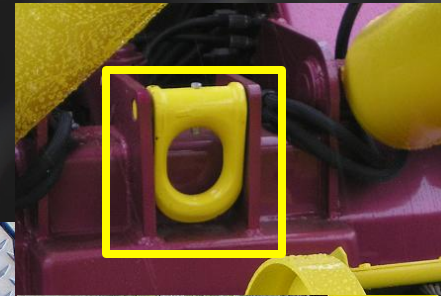
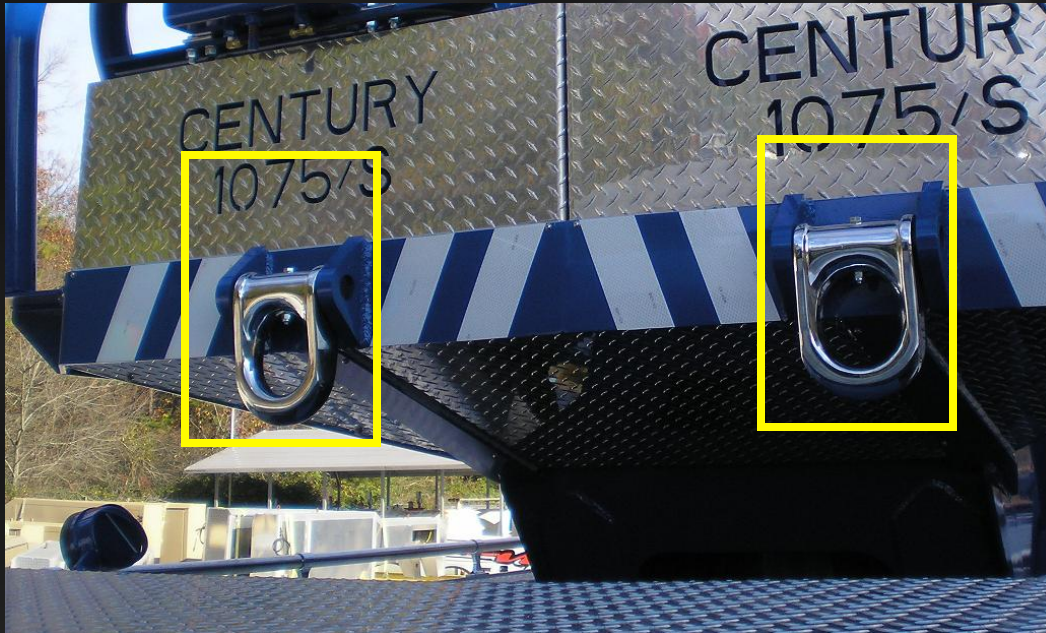


Standard D-Rings

(Additional D-rings included in 124004461 shown)

Rotator D-Ring Package

124004461 (9 pieces total) (1060S/1075S2/1075S only)



Chrome D-rings shown are additional cost

Note-this replaces 124002750, 124002762, and (2 qty)124002413

LDU Underlift 130" Reach



Standard on 1130 and 1140

LDU Lowrider 2 Underlift and Tower, 136" Reach



Optional on 1130 and 1140 as 124004202

SDU-4 Underlift and Tower 144" Reach



Standard on 1060, 1060S, 1075S2, 1075S

Optional on 1140 as 124004192, not available on 1130

SDU-4 Lowrider Underlift and Tower, 166" Reach



Optional on 1060, 1060S, 1075S2, 1075S in the Top Level

Optional on 1140 as 124004191, not available on 1130

HHU Underlift 135" Reach



Standard on 1075S Dual H-beam

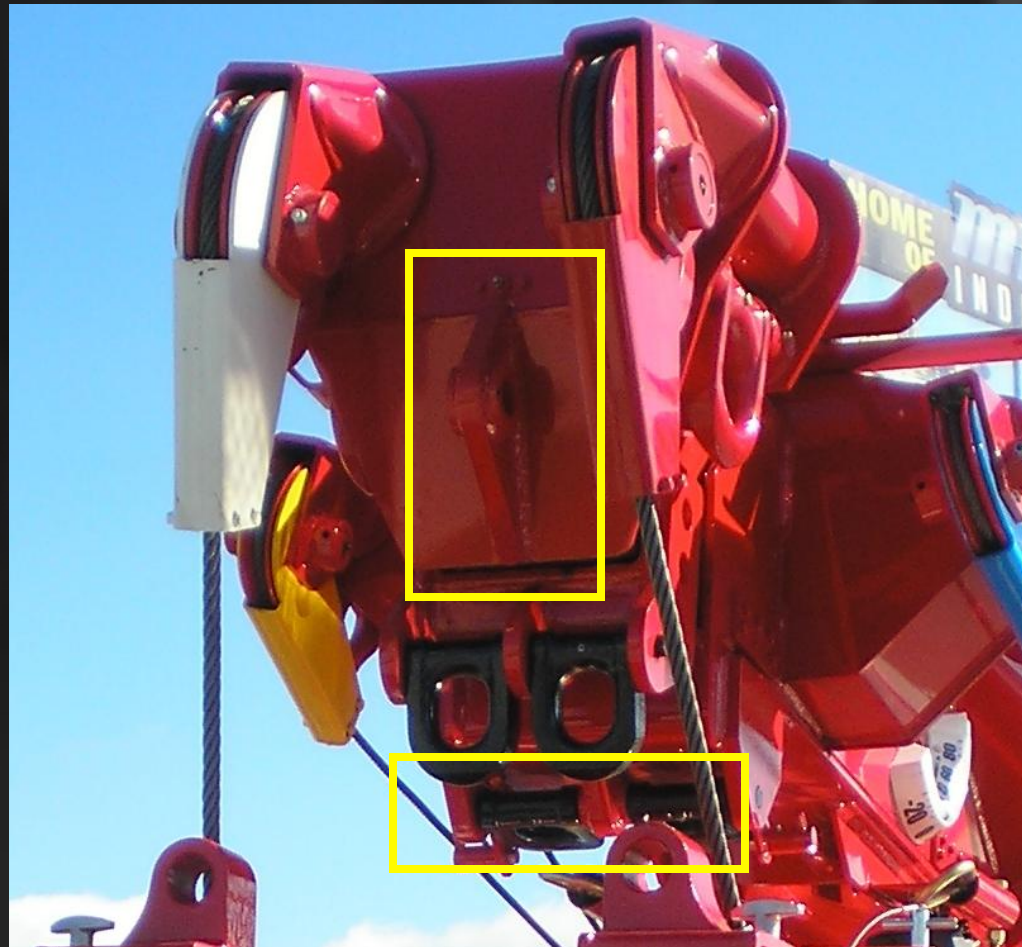
HHU Lowrider Underlift and Tower, 141" Reach



Optional on 1075S Dual H-Beam

Main Boom D-Ring Package

1140 now standard



Rotator 3-Stage H-Beam Front Outriggers

124004152 (262" Stance)



Note holes that allow legs to be pinned fully in or out during a side pull

2-Stage version (212" Stance) also available as 124004151

Rotator 4-Stage Rear Outriggers

124004124 (220" Stance)



Optional on 1140, 1060S, 1075S2, 1075S

Not available on 1130

H-Beam Outrigger Cover Kit (pr) 124004383



H-Beam Larger Feet

124004544 Dual H-Beam

124004545 Front H-Beam Only



Rotator Front Spade Attachment

124002691 (each)(Top Beam Outriggers)



Rotator Front Spade Attachment

124004175 (each) (H-Beam Low Outriggers)



Note Product Feature of H-Beam Low Outriggers, Standard Tieback Lug for Screw-Pin Shackle
Shackle not included

Rotator Winch-Bucket Alum Dress-Up

Diamond Plate 124002788

Smooth 124004110

For 1060S and 1075S



Includes 5 pieces

Personalized Winch Bucket Dress-Up Kit

124002807 (includes 124002788)

Diamond Plate Only

For 1060S and 1075S, not available on 1130/1140



Rotator Winch-Bucket Alum Dress-Up

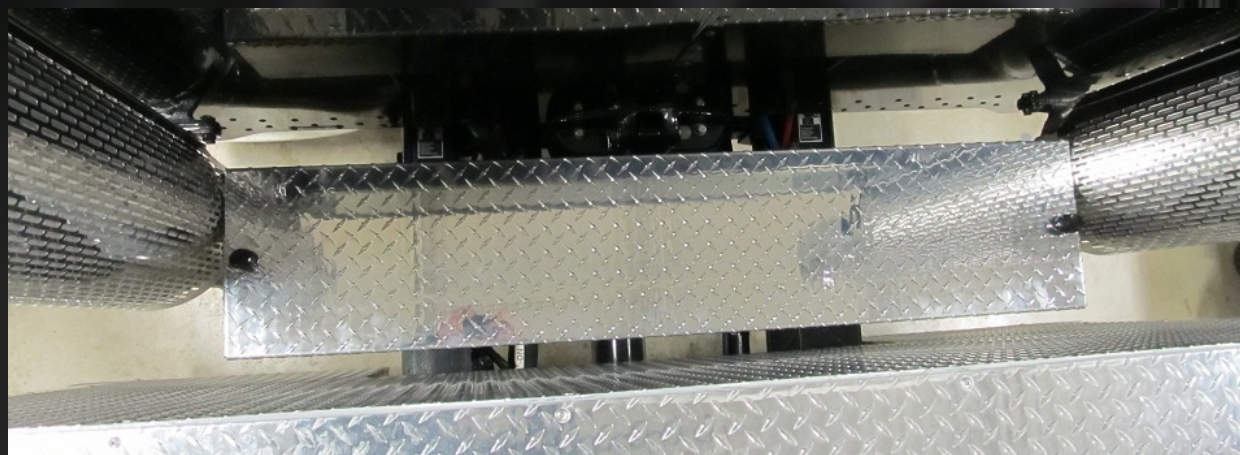
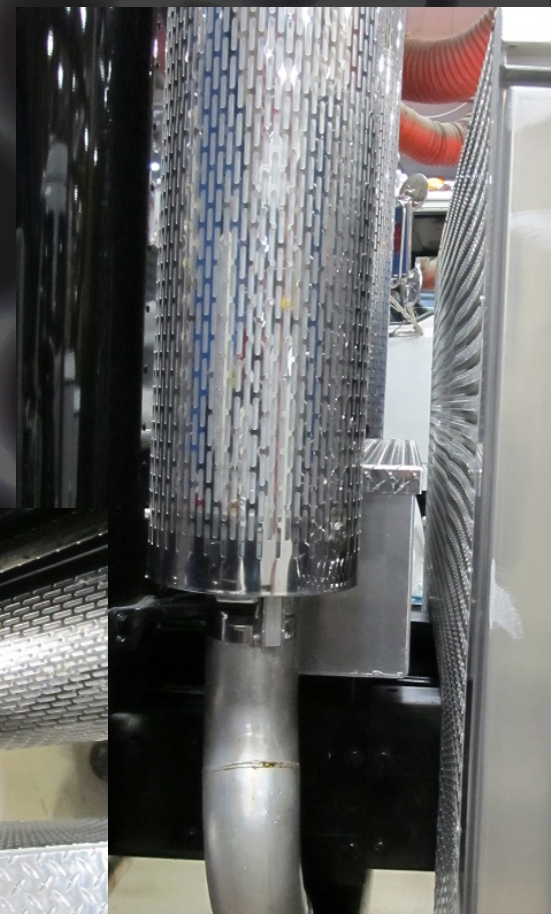
Smooth 124004210
For 1130 & 1140



Includes 5 pieces

Narrow Battery Box

124002763

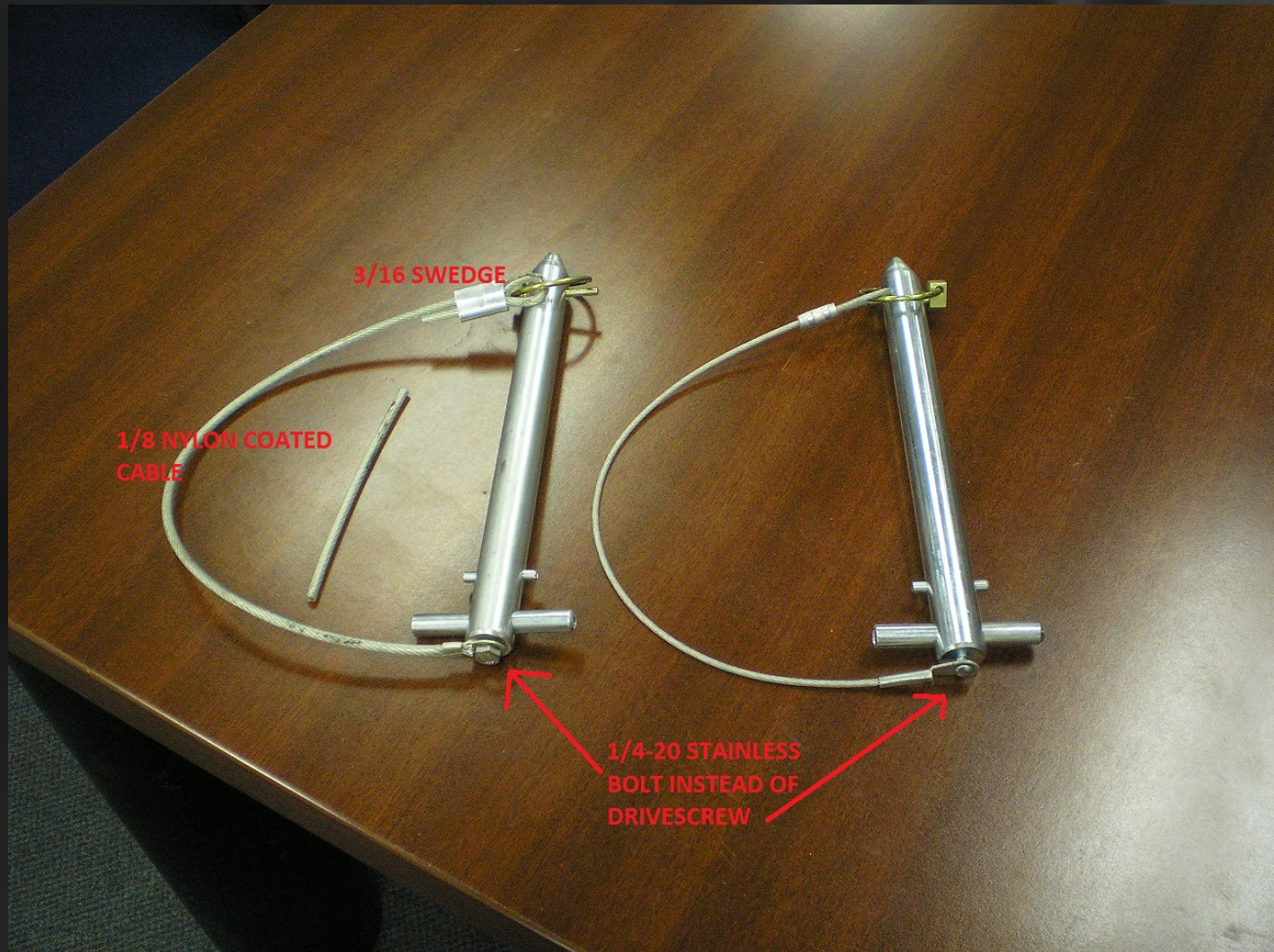


Standard Features

5X5 XHD Fabricated Crossbar now Standard 5130-1075S



Larger Tethers on Pins



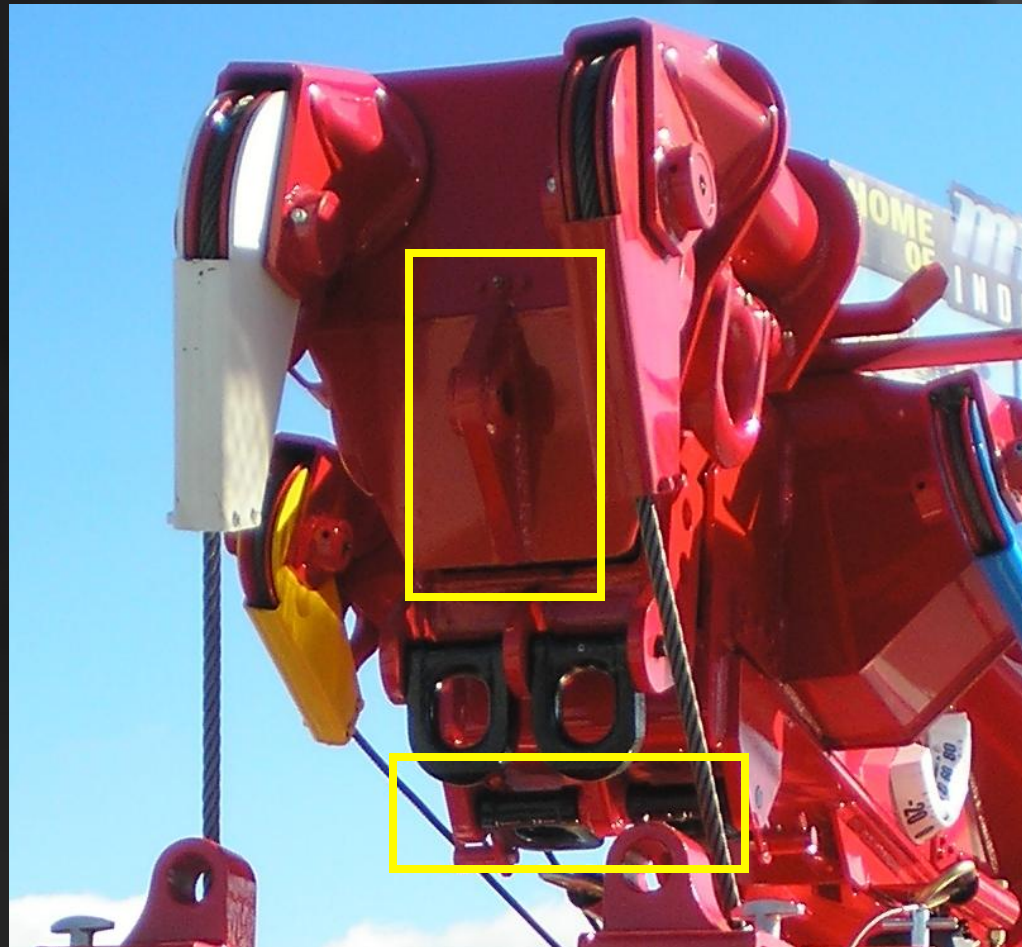
Underlift Bump Stops

(bolted instead of welded)



Main Boom D-Ring Package

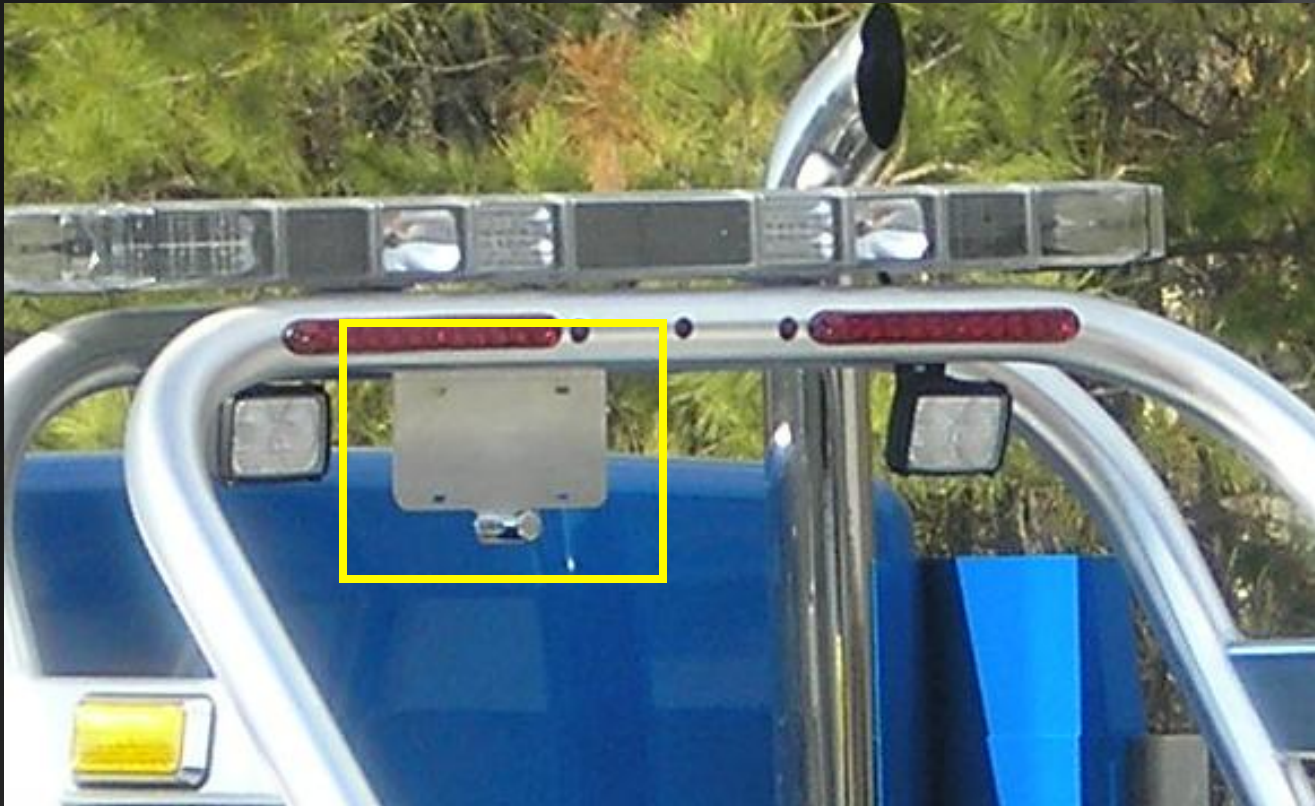
1140 now standard



Grab Hook on Safety Chain



Aluminum License Plate Holder



Leveled D-Ring Plates



For better access to top of tool boxes

Underlift Heel Protection Plate

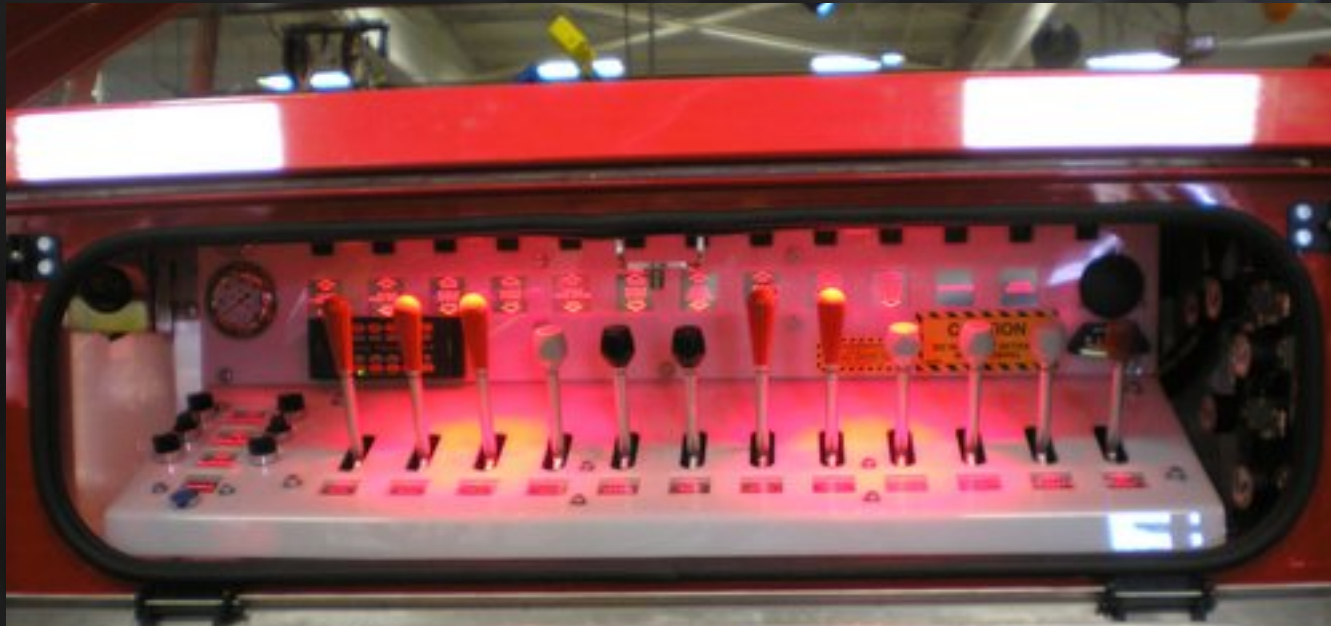


LED Lights



Lower current draw

Polycarbonate Panels



Tubes on Crossover Tunnel

When ordering the optional crossover tunnel box for optional body lengths for 4024 - 9055 units.



For brooms, shovels, handles, etc.
Straps, forks, and accessories shown are sold separately

Xylan Coated Pins



Xylan pins are used on 3212 and larger units.

Xylan coatings provide lubrication and controlled friction, wear resistance, heat resistance, nonstick and release properties and, at the same time, can also protect from corrosion.

Xylan pins do not eliminate the need for grease.

Corrosion Inhibit



(Untreated)

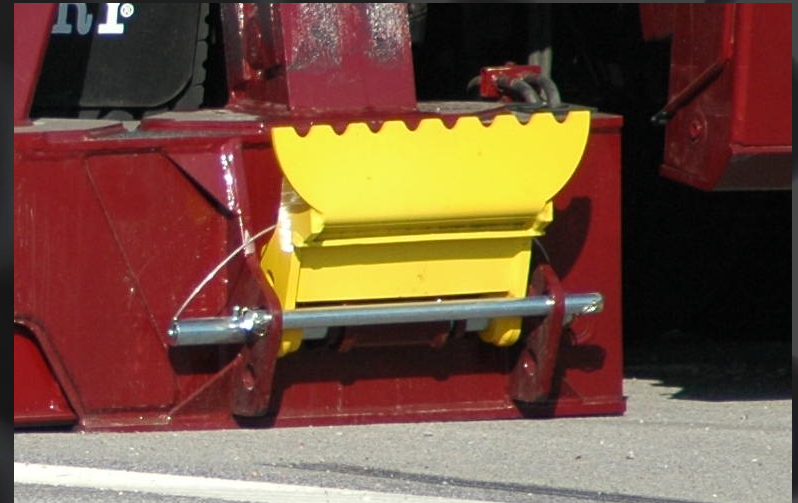


We apply corrosion inhibitor to valves and cables to try to slow the effects of road chemicals, sun/UV damage, and time.

Deutsch Connectors on 2-Speed Winches



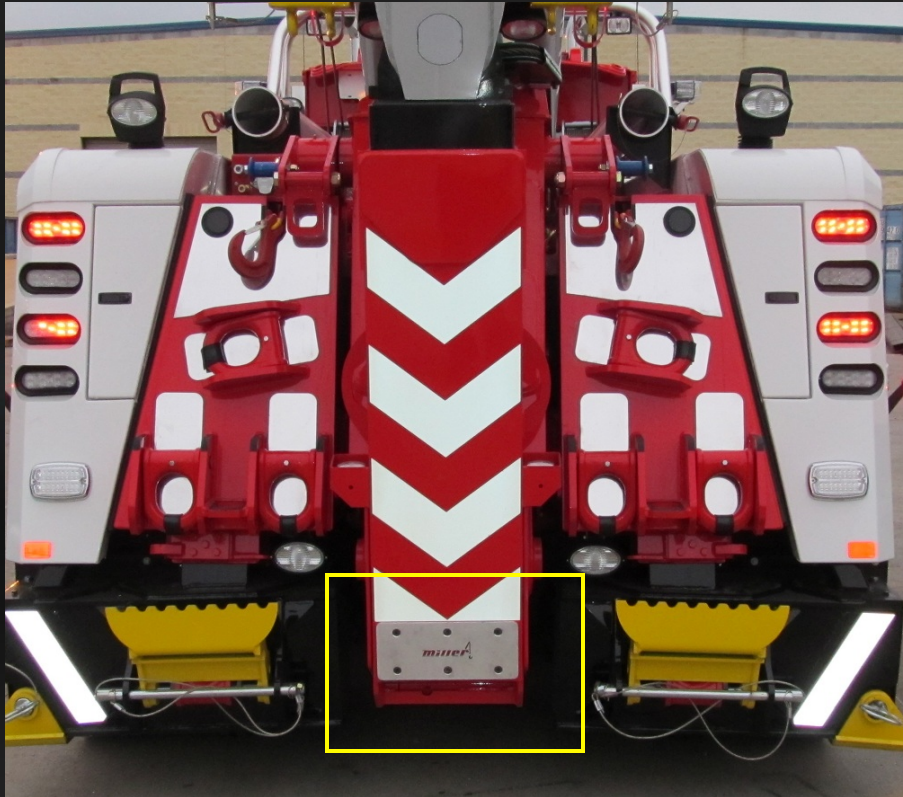
2.5 Degree 4-stage New Rear Spades and Feet



Retrofittable Features For Older Trucks

Underlift Heel Protection Plate

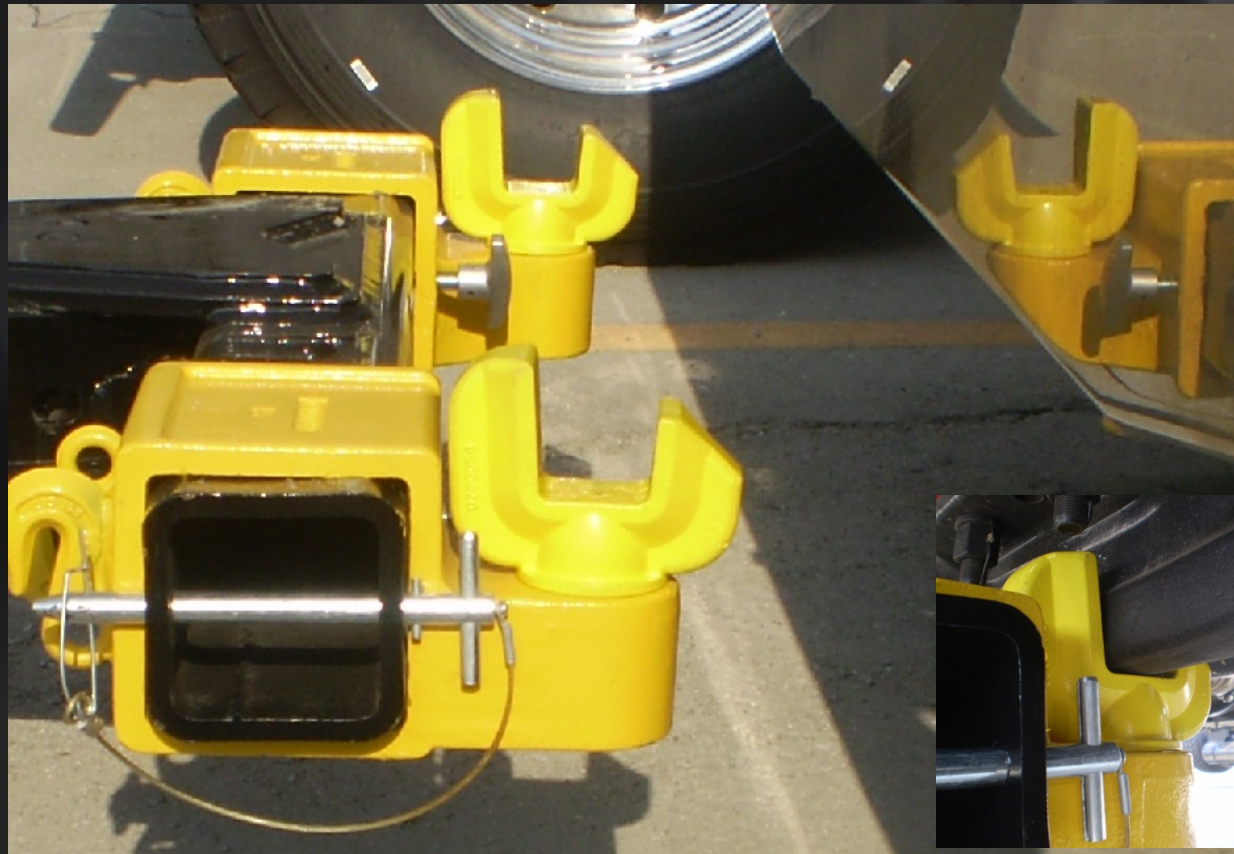
Now standard-p/ns for retrofit



- 124004464-14" long- SDU4 and Coach Lowriders (7035, 9055, HHU, and SDU4)
- 124004465-9 1/2" long-4024
- 124004466-10 1/2" long-5130, 5230, 7035, HHU
- 124004467-17" long- Street Lowriders (7035, 9055)
- 124004468-12" long-9055, Vulcan

Axle Fork Kit (pr)

Standard on all units 3212 and larger- 124004454



'06 Tail Retrofit Kit ('02 Body)



Rotator

124002839 Rotator
124002840 Non-Rotator



Non-Rotator

SDU Underlift Tilt Cylinder Remote Lube

Retrofit Kit 124003026



Rotator Rear Spade Attachment

124002690 (each)



Optional (ea) on 9055 with optional rear outriggers or Rotator